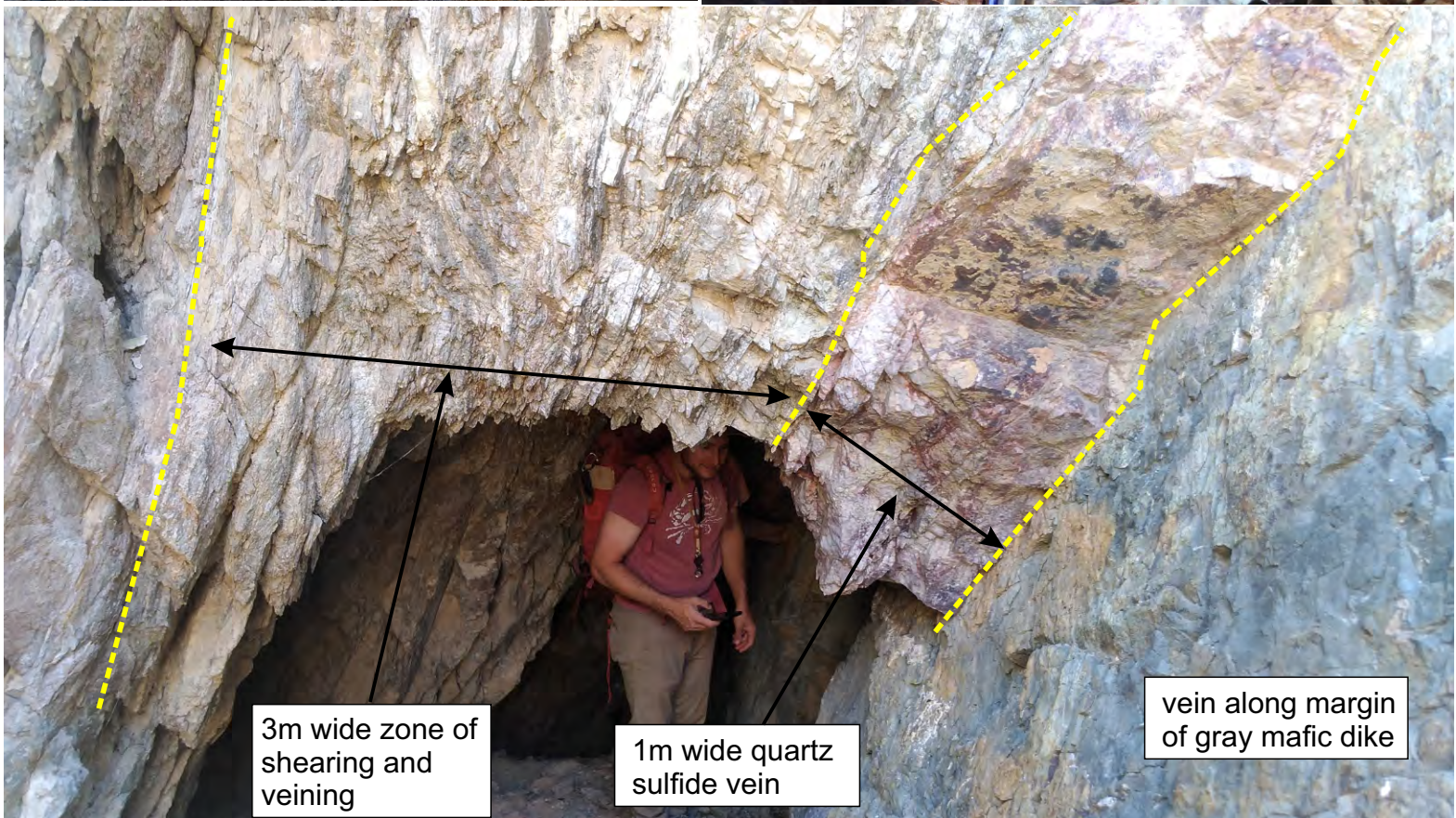


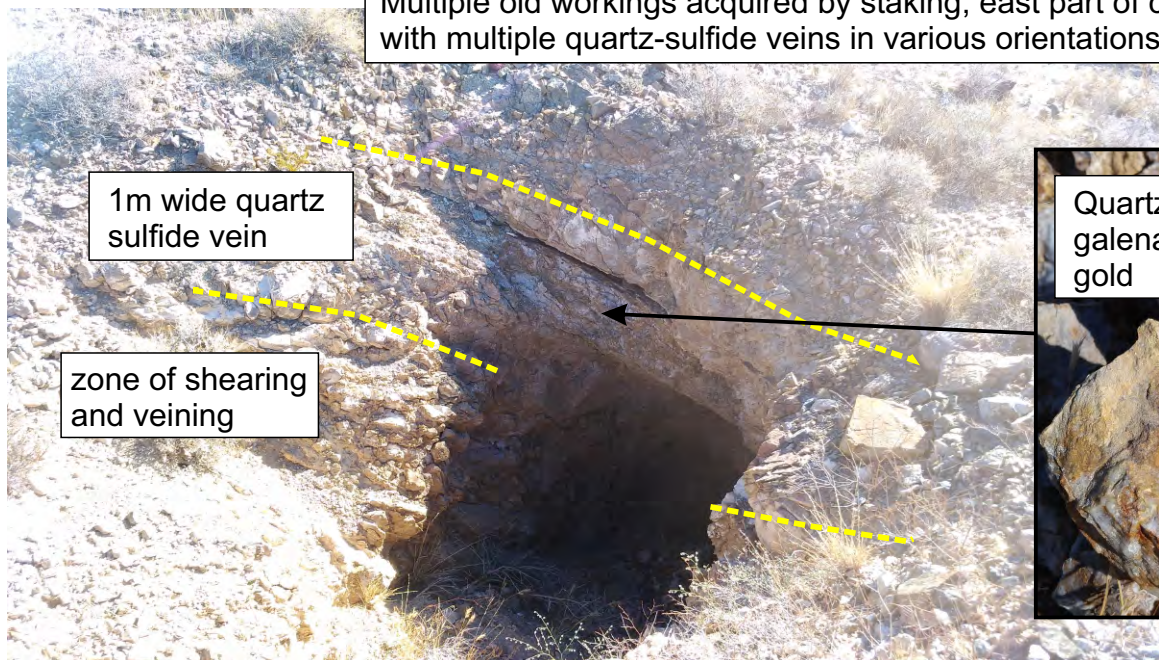
Historic workings acquired by staking, northeast part of claim block, showing a significant vein system with multiple parallel veins.



View of the east-central part of the claims looking north. Outcrop is sparse, several small historic workings expose quartz-sulfide-gold veins through the area.



Multiple old workings acquired by staking, east part of claim block, with multiple quartz-sulfide veins in various orientations.



1m wide quartz
sulfide vein

zone of shearing
and veining

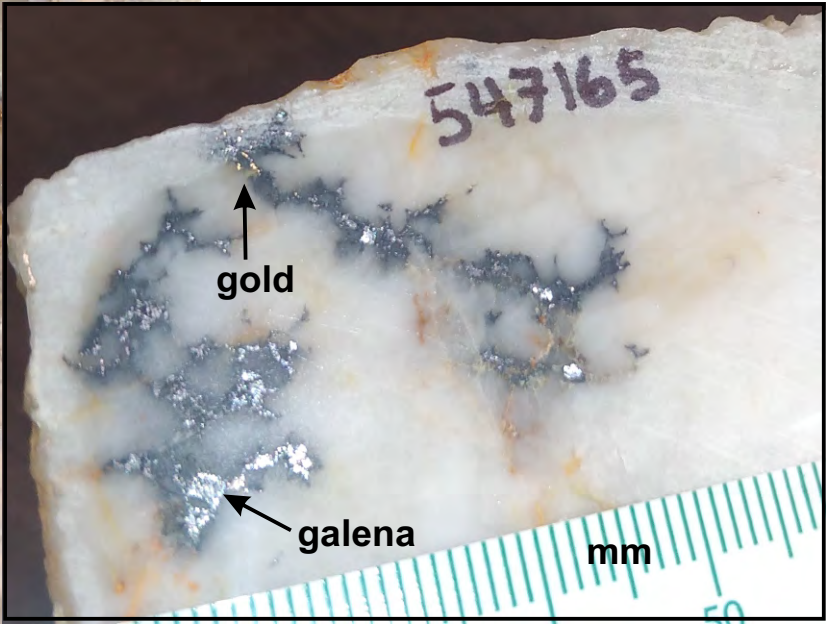
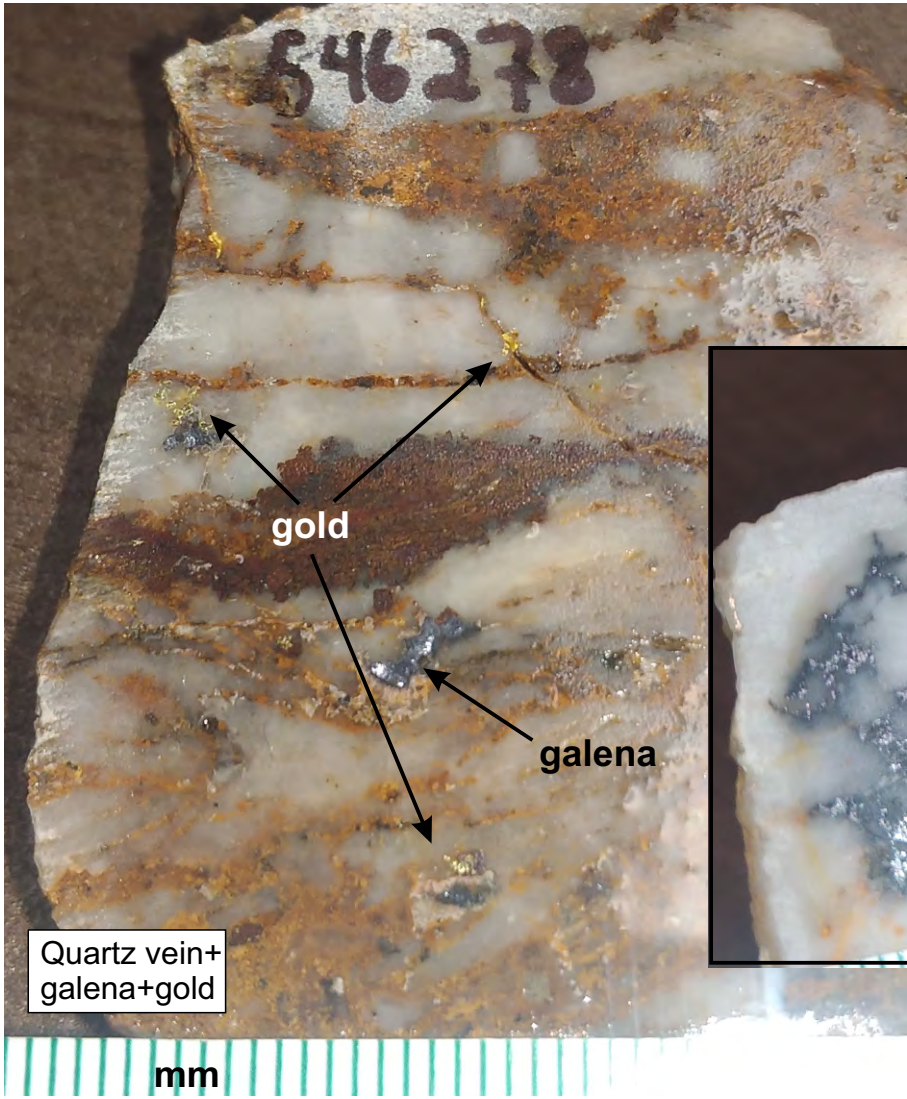
Quartz vein with
galena and traces
gold



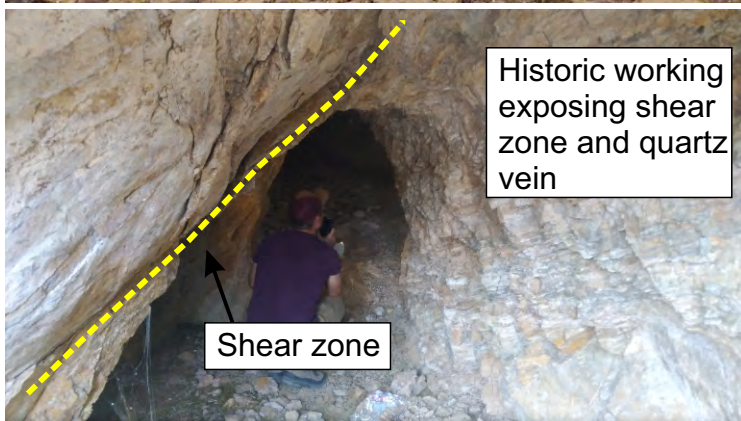
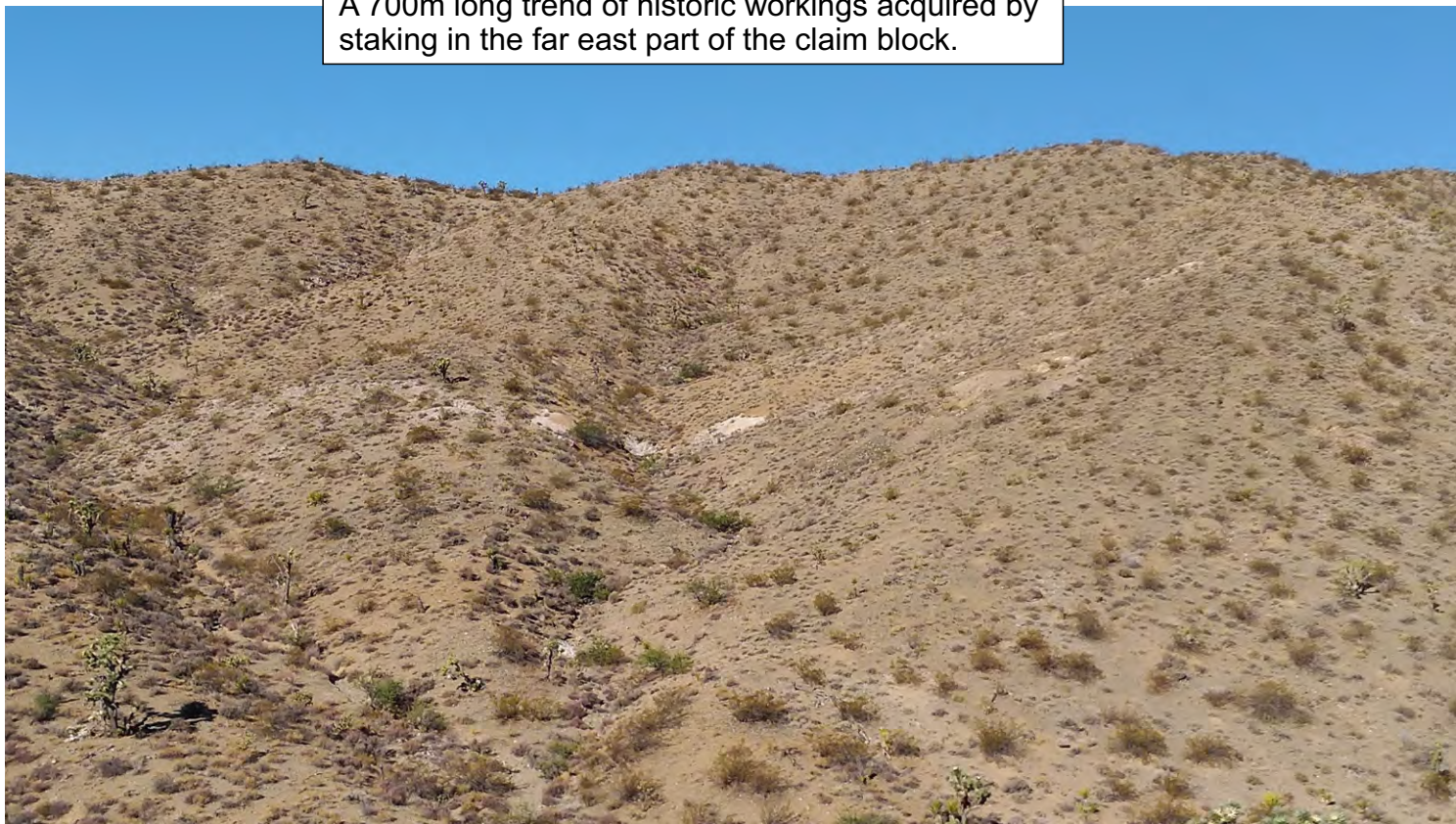
Old workings acquired by staking, east part of claim block, with gold bearing quartz-sulfide veins.



Gold-bearing samples 546278 and 547165 are from outcropping quartz+galena+gold veins located 110 metres apart along a NW trend



A 700m long trend of historic workings acquired by staking in the far east part of the claim block.



Historic working
exposing shear
zone and quartz
vein

Shear zone



Large exposed
quartz vein and
breccia

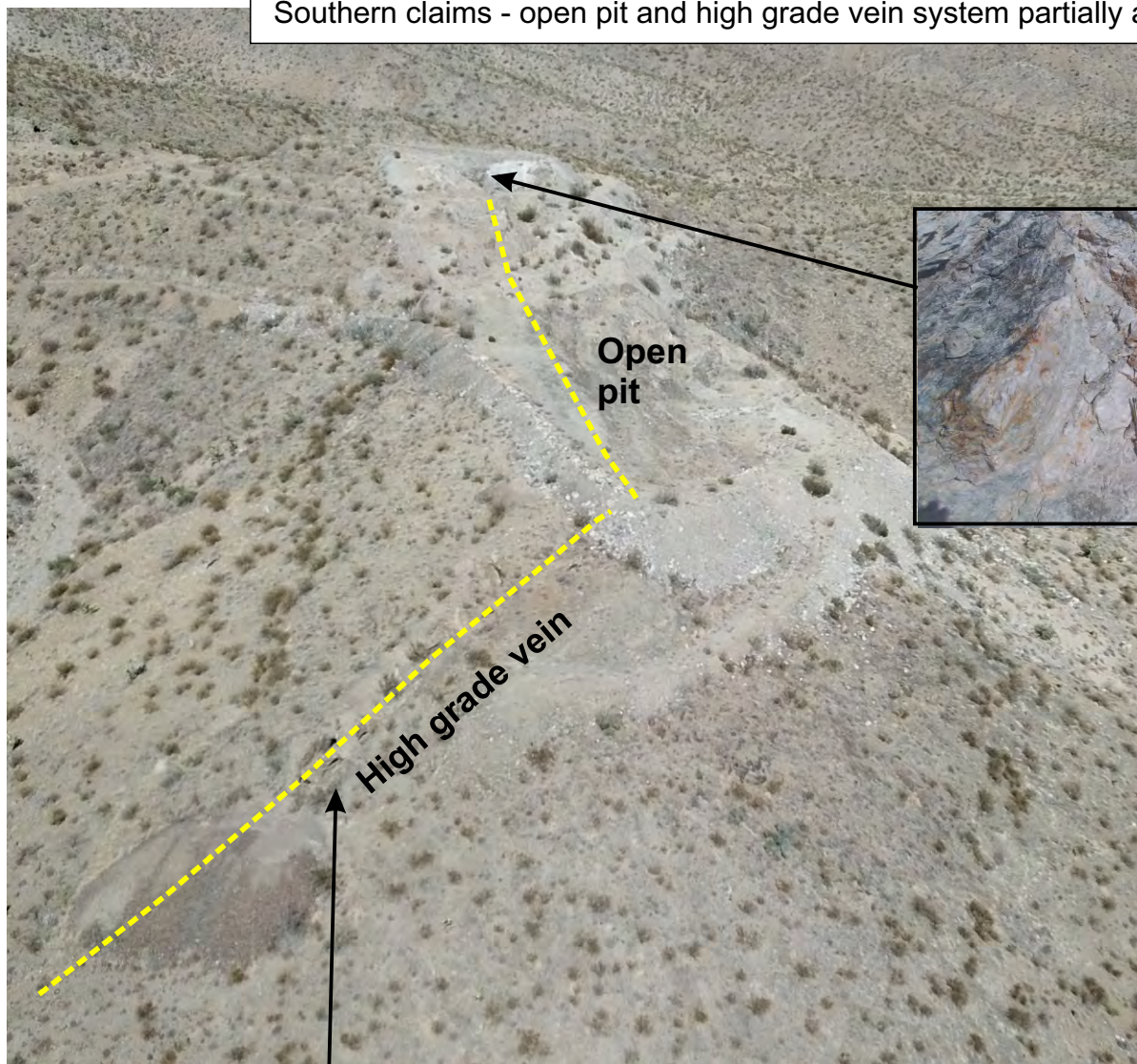


Quartz vein
with chalcopyrite
and bornite



Historic adit

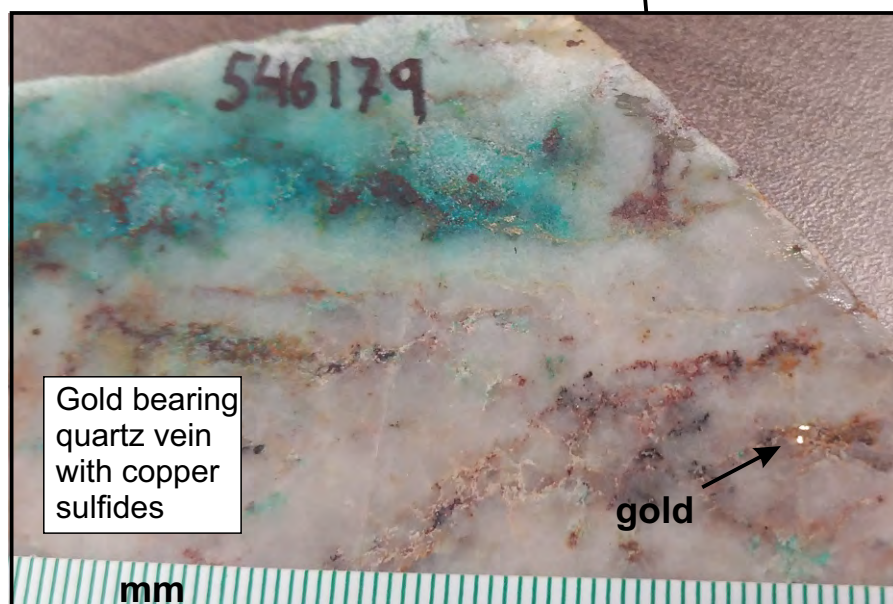
Southern claims - open pit and high grade vein system partially acquired.



Gold bearing quartz vein exposed in pit wall



Historic underground producer



Gold bearing quartz vein with copper sulfides

gold