



WOLFDEN

*For North American Metals that Power the Grid and
Support the EV Revolution*

January 2022

WLF.V

This presentation may contain "forward looking information", within the meaning of Canadian securities legislation, which is based on the opinions and estimates of management and are subject to a variety of risks and uncertainties and other factors that could cause actual events or results to differ materially from those projected in the forward looking information. Such risks and uncertainties include, but are not limited to, risks associated with the mining industry, the risk of commodity price and foreign exchange rate fluctuations, the ability of Wolfden to fund the capital and operating expenses necessary to achieve the business objectives of Wolfden, as well as those risks described in public disclosure documents filed by Wolfden. Due to the risks, uncertainties and assumptions inherent in forward-looking information, prospective investors in securities of Wolfden should not place undue reliance on these forward-looking information.

This presentation has been completed and reviewed by Wolfden management. Certain corporate projects referred to herein are subject to agreements with third parties who have not prepared, reviewed nor approved this presentation. The presentation is not intended to reflect the actual plans or exploration and development programs contemplated for such projects.

Don Dudek, P. Geo., Jeremy Ouellette P.Eng., and Ron Little, P. Eng. are the Qualified Persons for the information contained in this presentation who are Qualified Person's within the meaning of National Instrument 43-101.

For further information on the technical data provided in this presentation, including the key assumptions underlying the mineral resource herein, refer to the Sedar filings as listed below and see technical report entitled "*National Instrument 43-101 Technical Report, Pickett Mountain Project Resource Estimation Report, Penobscot County, Maine, USA*" dated January 7, 2019.

Unless otherwise stated, the financial information in this presentation is as reported in the latest quarterly filings or press release related to the financial information of the Corporation.

Pickett Mountain aerial photographs provided courtesy of LandVest

Information in this presentation is as of Jan 7, 2022.

Board

Ron Little	President & CEO - Founder of Orezone Resources and Orezone Gold
Ewan Downie	Non-Exec Chair - Founder, Founder of Premier Gold, I80 Gold and Wolfden #1
Ian Atkinson	Director - Previous CEO of Centerra, Director of Kinross
Don Bubar	Director - Founder of Avalon Metals, Previous VP Exploration Aur,
John Seaman	Director - Previous CFO and Director of Premier, Wolfden #1, Director of I80

Management

Don Dudek	VP Exploration - Previous CEO Savary Gold, VP Aur, Avion, Endeavour
Jeremey Ouellette	VP Project Development – Previous Trevali, Caribou Operations
Don Hoy	VP Chief Geologist – Previous CEO Wolfden, VP Cliffs and Freewest,
John Breedlove	Manager Exploration US – Previous Chief Geo Doe Run

Advisors

Rahim Lakha	Market and Investor Development
Bill Fisher	Geologist, Previous Boliden, Aurilean, Globstar, Gold Quest,
Scott Trebilcock	Process Eng. and Markets, Previous Nevsun, currently CEO Kore mining
Joe Spiteri	Long-time leading mining consultant, resource models and technical studies

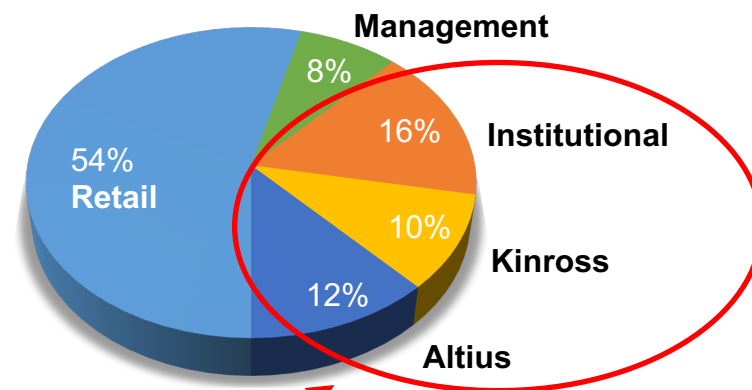
Corporate Summary



Capital Structure

Share Price	\$0.20
Shares Outstanding	151.8 M
Options (w.a. \$0.34)	7.7 M
Warrants (w.a. \$0.39)	16.5 M
Market Capitalization	\$30.4 M
Cash (Sept 30 th)	\$4.9 M

Share Ownership (+40% Control)



Analyst Coverage

Beacon Securities	Michael Curran
Canaccord Genuity	Tom Gallo / to be replaced
Cormark Securities	Stefan Ioannou

Strategic Investors Support First Mover Strategy.
Wolfden will add significant value and pave the way for Project Development by Advancing and Permitting Projects in New Untested Jurisdictions.

WLF.V



Advancing Three Project Silos in 2022 – Polymetallic (VMS) , Silver and Nickel

- Drill Programs on 3 Significant Projects
- Q1 and Q2 Drill Programs on Nickel Sulphide in Manitoba and Big Silver in Maine
- Q3 to Q4 Drill Silver Projects in Maine & New Brunswick

Project Milestones in next 3 to 9 months

- Nickel Projects – Initial Resource Reports Q1, Expansion Drill program Q1 2022
- Silver Projects – Fall 2021 Drill and Geophysics results in Maine and NB
- Pickett Mt. Rezoning application update Q1 to Q4

Financed - \$7M in 2021

- Strategic Partners **Kinross and Altius**
- New Intuitional investors, Insiders and Long term Investors
- \$0.23M Grant from Manitoba Gov't in 2021 and potential for +\$0.3M in 2022

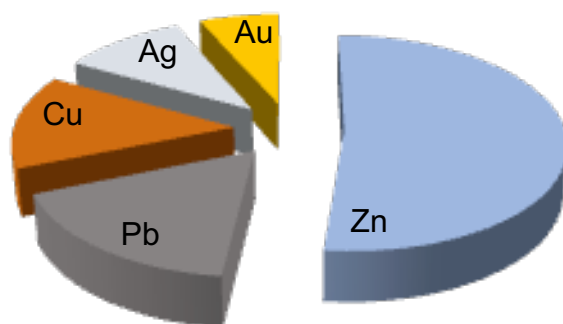
Polymetallic – Diversified Commodity Exposure



Pickett Mountain Average Grade **9.1% Zn** **3.8% Pb** **1.1% Cu** **102g/t Ag** **0.8g/t Au**

(Cormark Securities metal pricing)

Value per Tonne in Situ = US\$478 (using \$1.15/lb Zn, \$1.0/lb Pb, \$3.0/lb Cu, \$17/oz Ag, \$1,475/oz Au)



201lb Zinc or \$231

84 lb Lead or \$84

24 lb Copper or \$72

3.3 oz Silver or \$56

0.02 oz Gold or \$35

\$478 / tonne

**(or \$603 / tonne at
Dec 2021 metal prices)**

A Comparison of Metal Equivalent Resources Pickett Mt (based on Nov 17, 2021 Mineral Resources Statement)

Resource Category	Tonnes Mt	ZnEq M lbs	ZnEq Grade %	CuEq M lbs	CuEq Grade %	AgEq K Oz	AgEq Grade g/t	AuEq Oz	AuEq Grade g/t
Indicated	2.72	1,141	19.0	438	7.3%	77,230	882	890,106	10.2
Inferred	3.56	1,488	18.8	571	7.2%	100,683	871	1,160,417	10.0

NOVEMBER 17, 2021 - MINERAL RESOURCE STATEMENT using 7% Cutoff

Category	Tonnes	% Zn	% Pb	% Cu	g/t Ag	g/t Au	Density	% ZnEq
Indicated	2,724,000	8.91	3.83	1.22	97.2	0.8	3.84	17.72
Inferred	3,593,600	9.27	3.83	1.00	105.4	0.7	3.81	17.65

SEPTEMBER 14, 2020 - MINERAL RESOURCE STATEMENT using 7% Cutoff for PEA

Category	Tonnes	% Zn	% Pb	% Cu	g/t Ag	g/t Au	Density	% ZnEq
Indicated	2,177,000	9.25	3.68	1.32	96.4	0.9	3.98	18.23
Inferred	2,294,000	9.79	3.88	1.15	101.1	0.9	3.99	18.62

SENSITIVITY TO CUT-OFF GRADES - INDICATED MINERAL RESOURCE - November 17, 2021

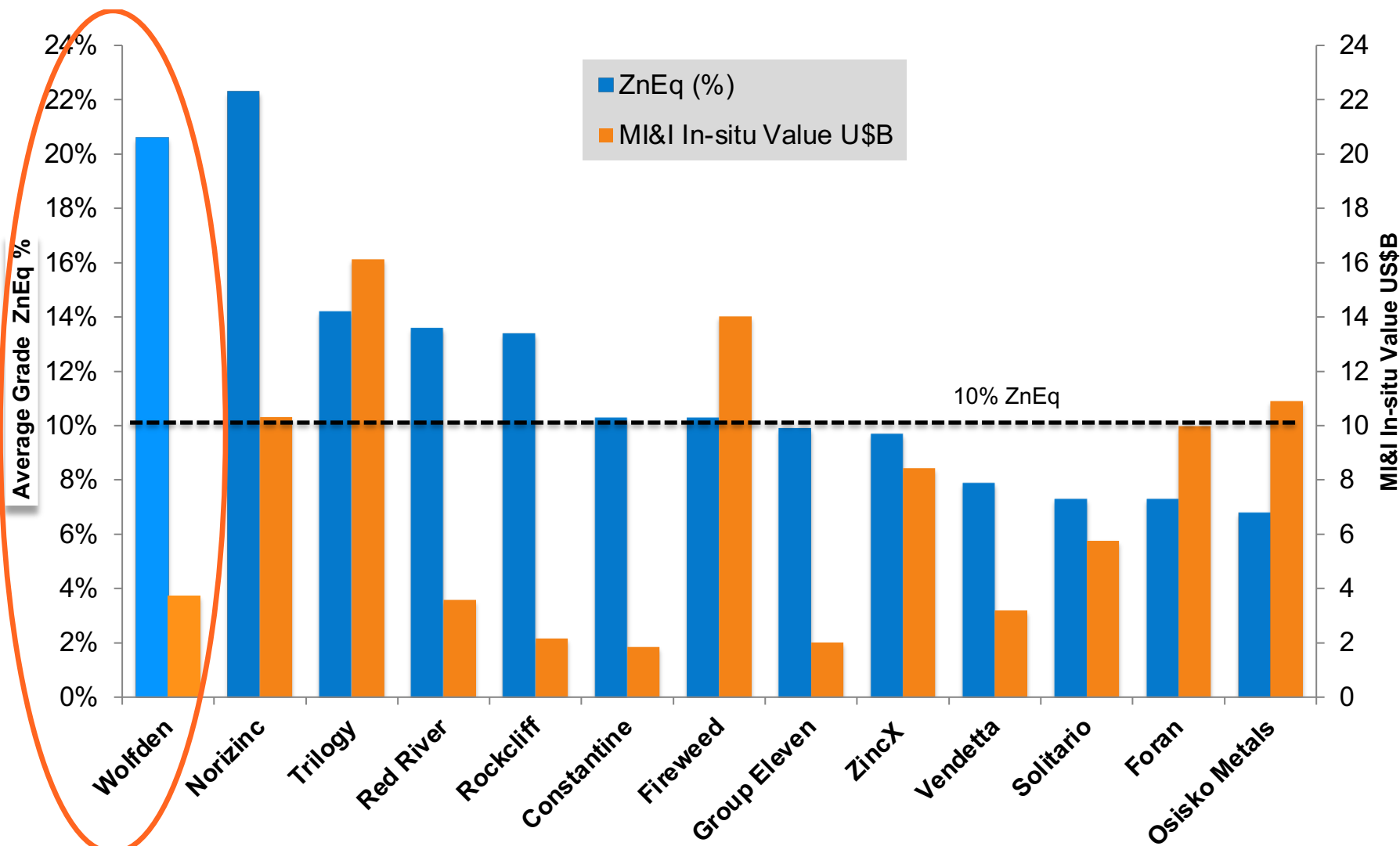
% ZnEq Cut-off Grade	Tonnes	% Zn	% Pb	% Cu	g/t Ag	g/t Au	Density	% ZnEq
3 % ZnEq	5,539,000	5.25	2.22	0.92	64.0	0.6	3.85	11.12
4 % ZnEq	4,723,000	5.95	2.52	0.99	71.2	0.6	3.84	12.44
5 % ZnEq	3,752,000	7.10	3.02	1.09	81.5	0.7	3.83	14.50
7 % ZnEq	2,724,000	8.91	3.83	1.22	97.2	0.8	3.84	17.72
9 % ZnEq	2,393,000	9.69	4.17	1.28	103.9	0.9	3.84	19.08

SENSITIVITY TO CUT-OFF GRADES - INFERRED MINERAL RESOURCE – November 17, 2021

% ZnEq Cut-off Grade	Tonnes	% Zn	% Pb	% Cu	g/t Ag	g/t Au	Density	% ZnEq
3 % ZnEq	6,471,000	5.88	2.42	0.82	71.7	0.6	3.83	11.83
4 % ZnEq	5,426,000	6.79	2.79	0.87	81.9	0.6	3.81	13.44
5 % ZnEq	4,479,000	7.90	3.25	0.92	93.5	0.7	3.79	15.33
7 % ZnEq	3,593,000	9.27	3.83	1.00	105.4	0.7	3.81	17.65
9 % ZnEq	3,003,000	10.46	4.32	1.05	114.2	0.8	3.82	19.57

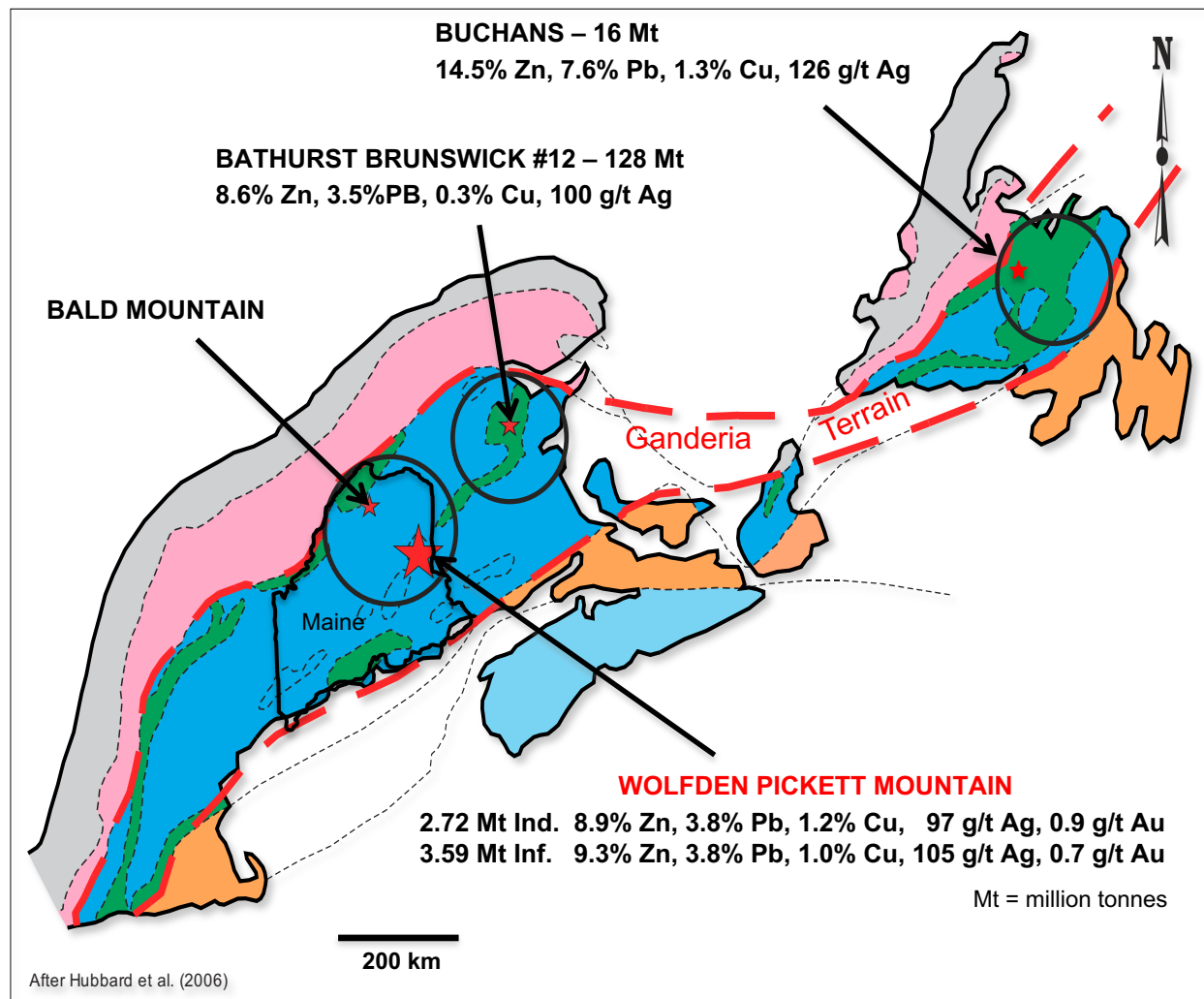
Using US\$1.20/lb Zn, \$2.50/lb Cu, \$1.00/lb Pb, \$16.00/oz Ag, and \$1,200/oz/Au

Comparisons – Grade and In-situ Value



Using information provided by Cormark

Tectonic Map of the Appalachians



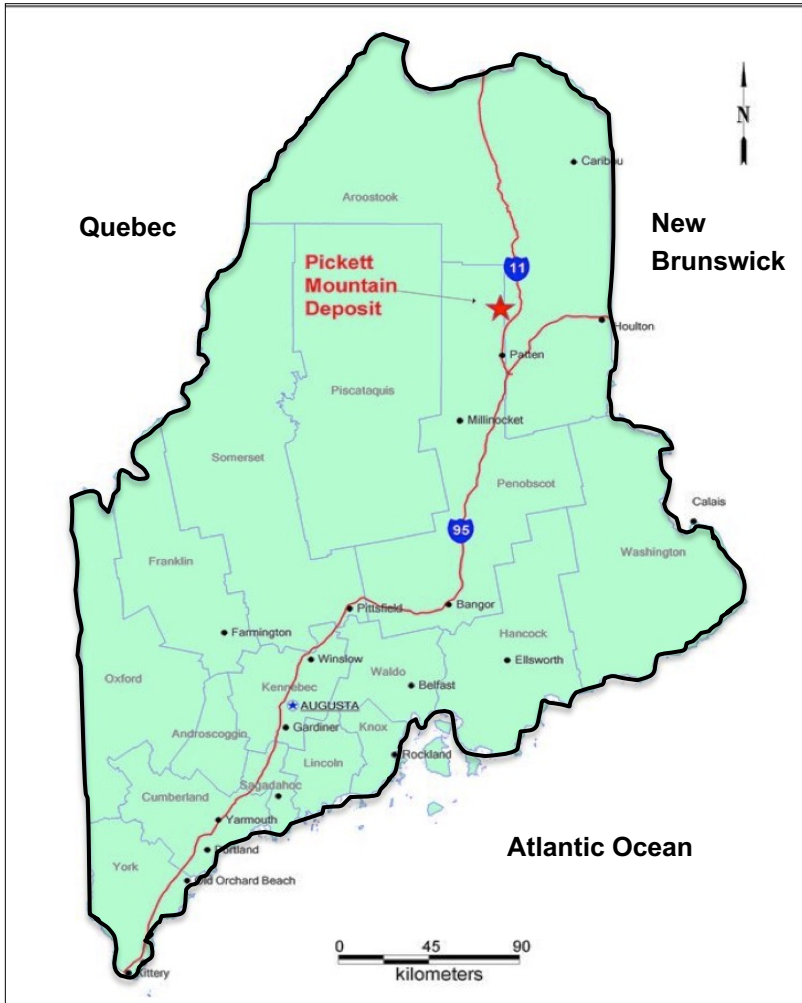
- Ganderia Terrain geologic belt hosts world-scale endowment of high-grade Zn-Pb-Cu-Ag massive sulphide deposits

- **BATHURST CAMP 349 Mt**
World's largest VMS district w/
Production of 134 Mt

- **BUCHANS CAMP 112 Mt**
Production 16 Mt

- **WOLF DEN PICKETT MTN.**
Continuation of Ganderia Terrain belt into Maine - **Heavily underexplored and undeveloped**

Wolfden First Mover in Maine on New Mining Code



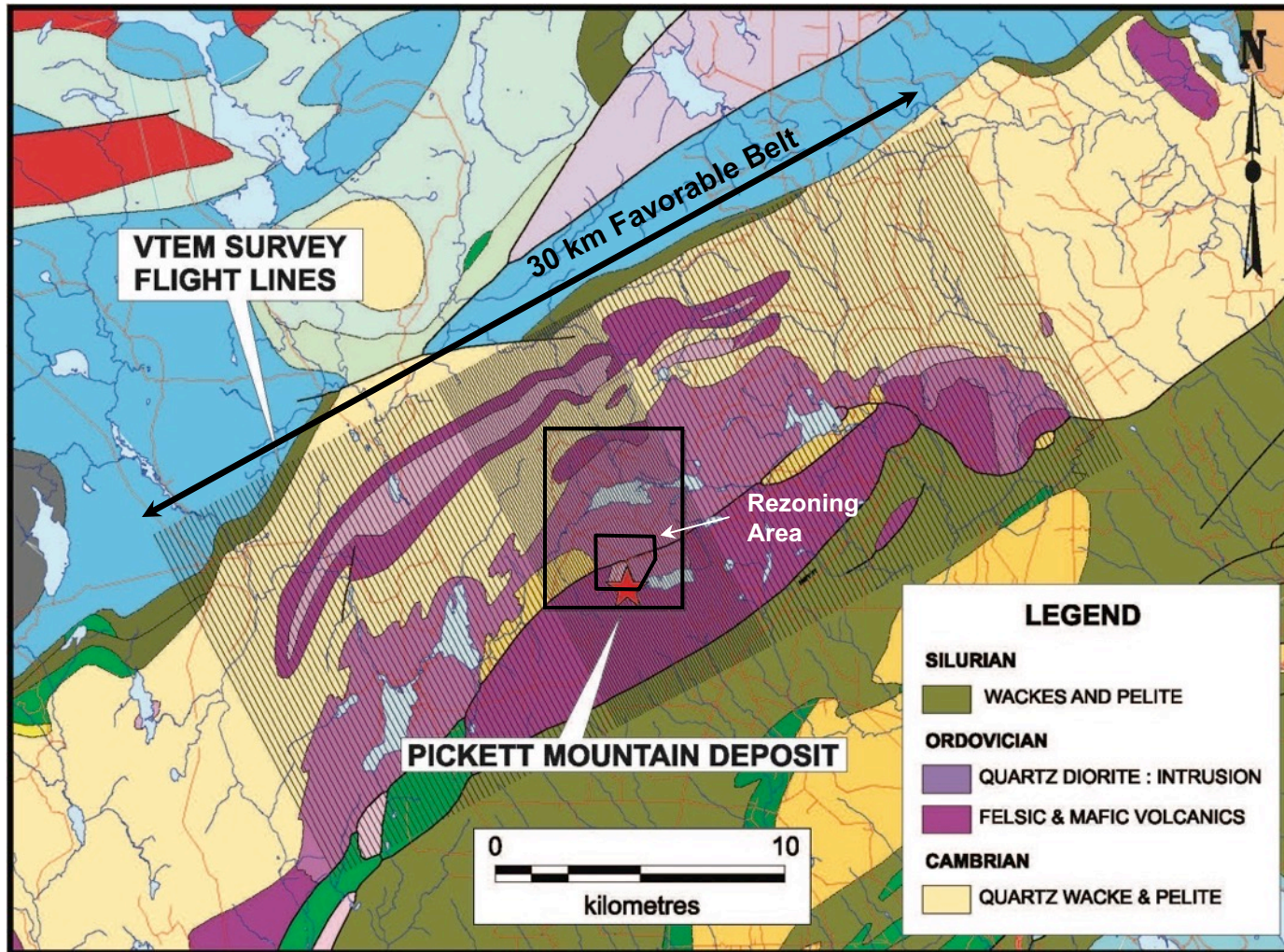
Location

- 45 miles from US-Canada Border
- 3 miles off State Hwy 11
- 15 miles to railway siding
- Power line and excellent Lumber roads
- No population within +2 km of site

New Mining Code 2017

- Streamlined permitting process
- Underground mining allowed for metals
- Dry stack tailings required
- 100 year bond on monitoring
- No Federal involvement in permitting

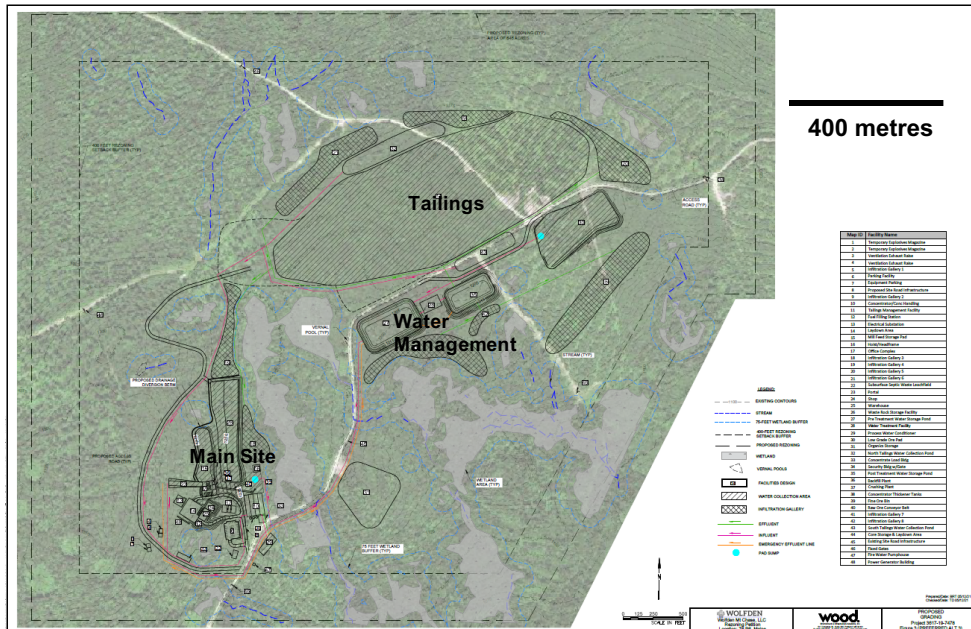
Wolfdan Flew the Entire 30 km Belt



Airborne Geophysics completed over the entire favorable belt (see VTEM flight lines)

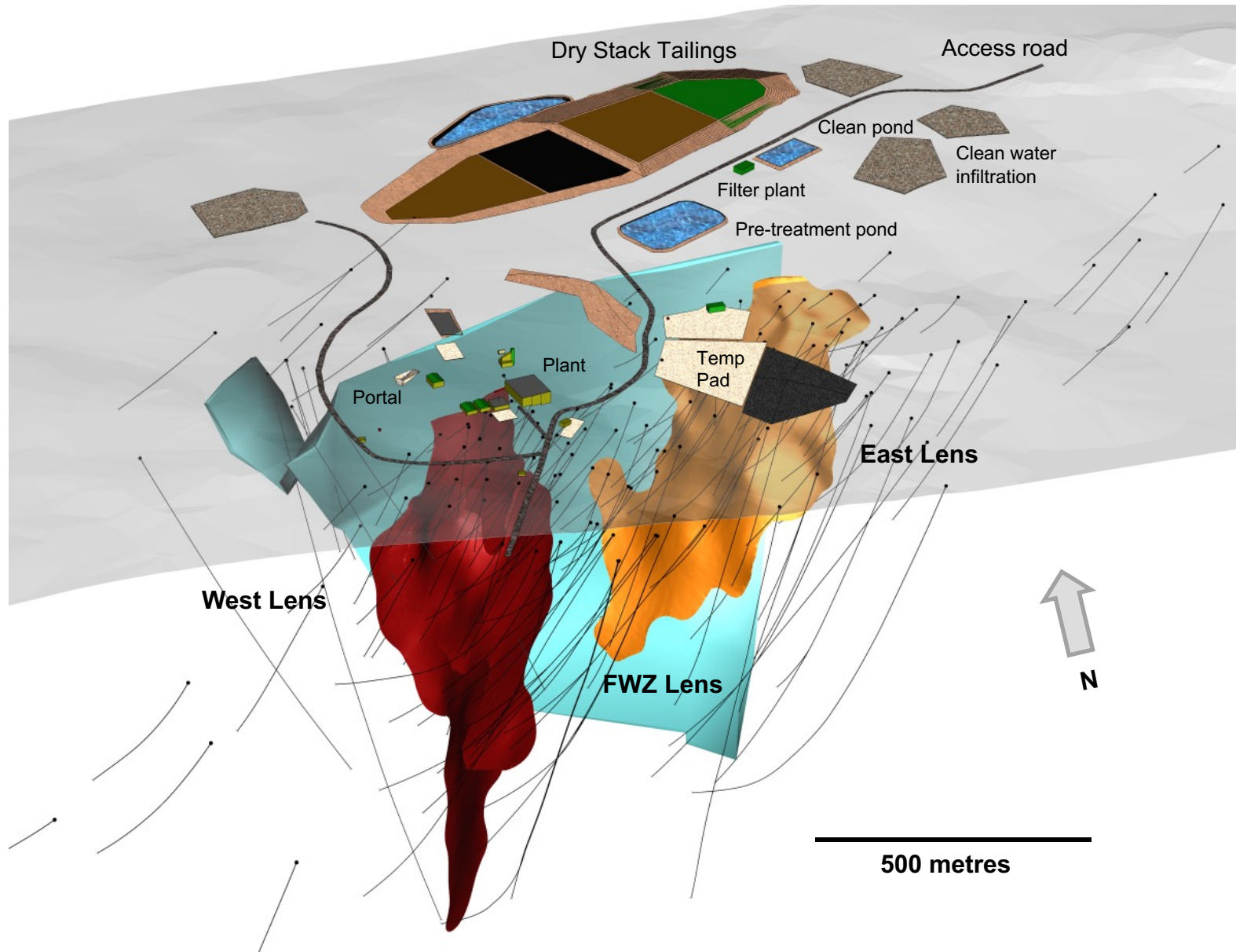
Other targets similar to Pickett Mt. identified

Potential for discovery of new deposits nearby and in the 30km belt



- **US\$ 198 Million After-Tax NPV8% to Wofl den**
- **37% After-Tax IRR**
- **2.4 year Payback and 10 year mine life**
- **\$0.38/lb Zinc AISC - (Breakeven price)**
- **US\$148 M Initial Capex including \$13M Closure costs and 20% Contingency**
- **Small Footprint with Low Impacts. Layout avoids all wetlands and water bodies**
- **All water returned to ground is filtered and treated to same quality as background**
- **Creates +130 jobs and over US\$400 M in estimated revenues to the State**
- **Local communities very supportive**

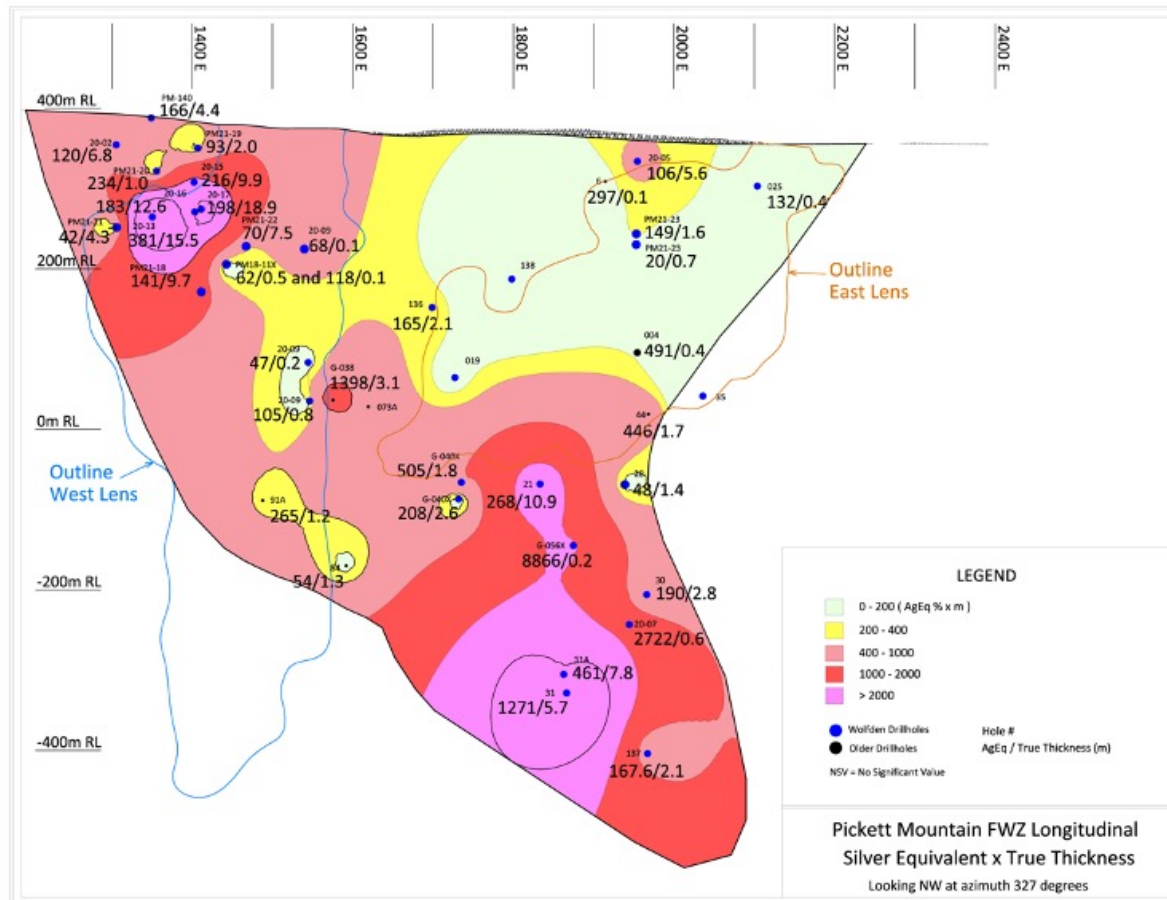
Discovery of Footwall Lens (FWZ)



Footwall Lens Longitudinal Section AgEq



WOLF DEN



The Footwall Lens(FWZ) occurs 150 metres north of the West and East Lens (in this image, 150m behind the West and East Lens)

FWZ has Silver enrichment of up to 200 oz/tonne

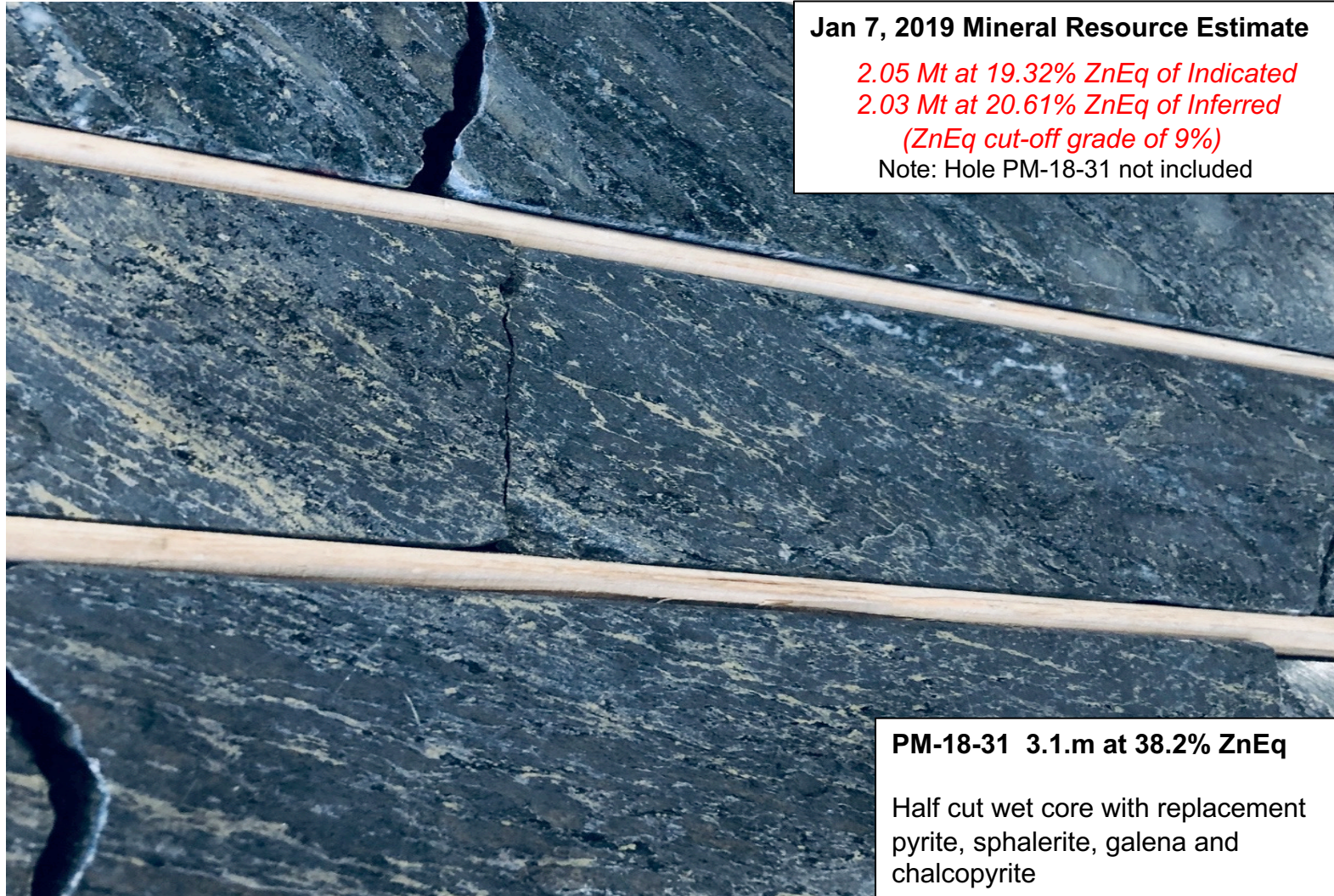
Associated sulphide stringer mineralization between West Lens and FWZ

Deeper higher grade area indicates potential for additional tonnage

High Grade FWZ Mineralization (~ 38% ZnEq)



WOLF DEN



Jan 7, 2019 Mineral Resource Estimate

2.05 Mt at 19.32% ZnEq of Indicated

2.03 Mt at 20.61% ZnEq of Inferred

(ZnEq cut-off grade of 9%)

Note: Hole PM-18-31 not included

PM-18-31 3.1.m at 38.2% ZnEq

Half cut wet core with replacement pyrite, sphalerite, galena and chalcopryite



Big Silver – Silver & Polymetallic - Maine (First mover advantage)

- ✓ Zoned hydrothermal breccias/replacement zones with Silver, Gold and Base metals

Bathurst Mining Camp Silver and Polymetallic – New Brunswick

- ✓ Large land holdings with Silver and Base Metal Targets

Rice Island - Nickel Sulphide Project – Manitoba near infrastructure

- ✓ Higher grade Ni with Cu and Co

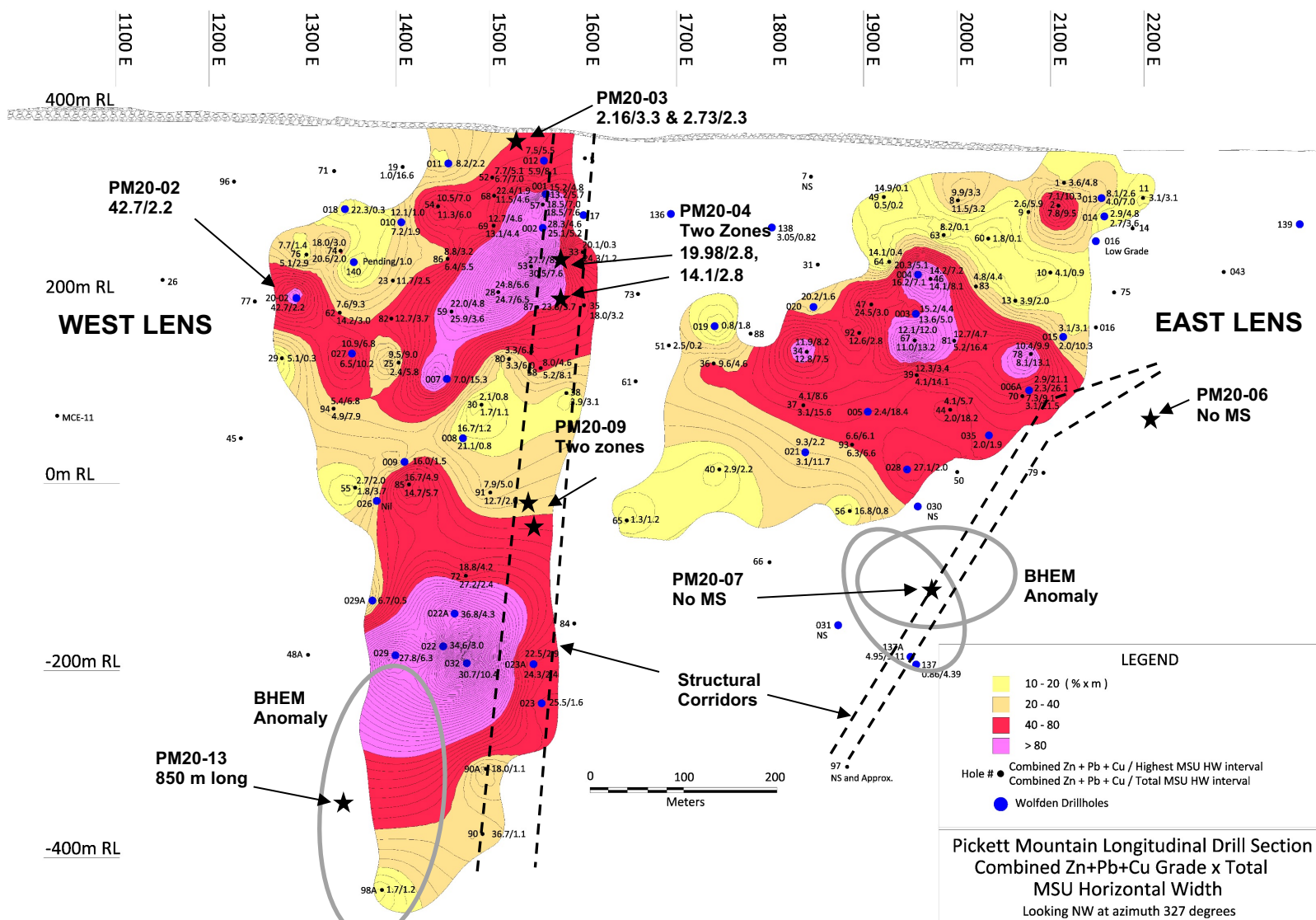
Nickel Island Nickel Sulphide Project – Manitoba

- ✓ Higher grade Ni with potential PGE's

Drill Hole Longitudinal Section



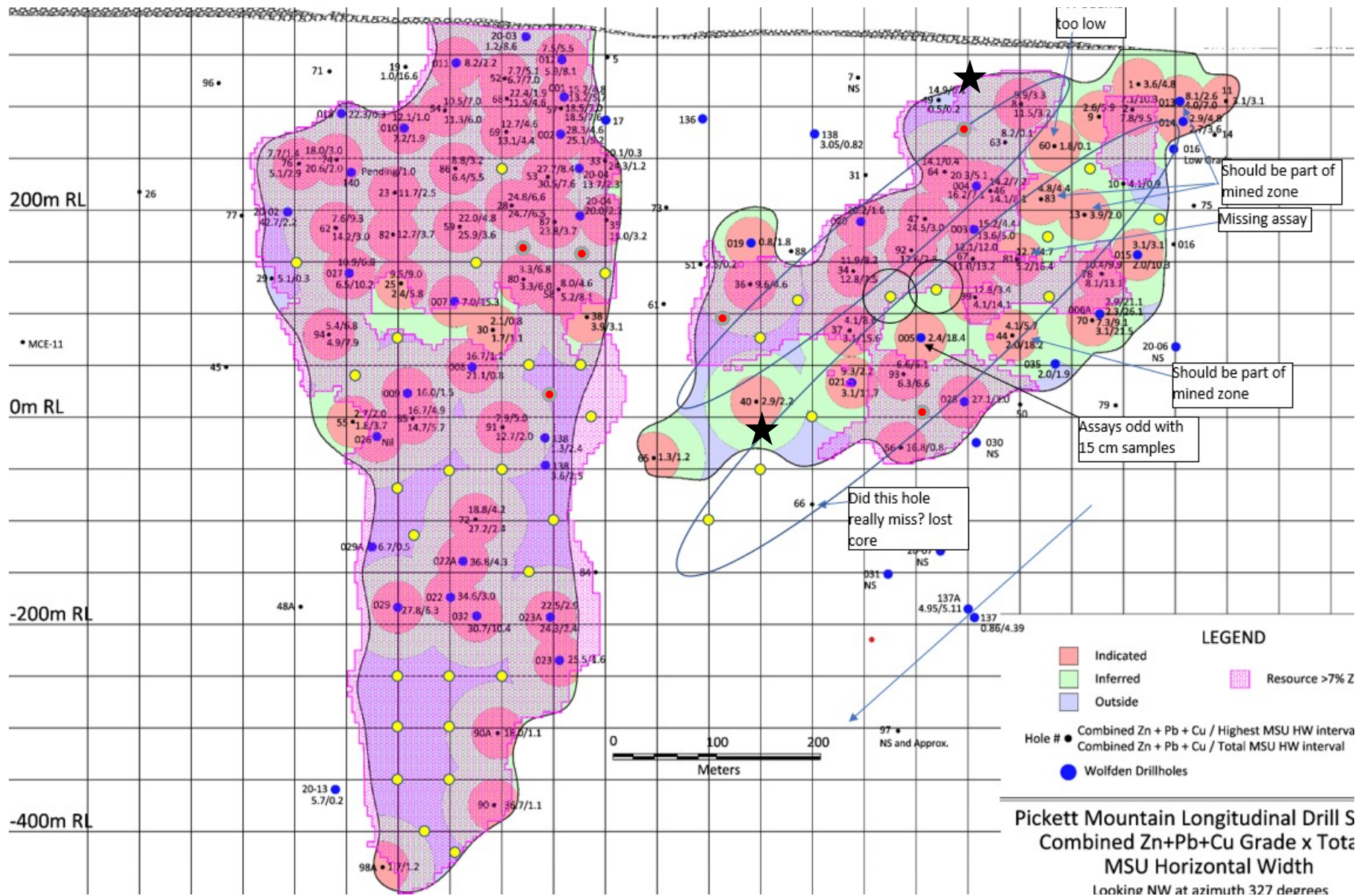
WOLFDEN



Future Infill Drilling for Reserves

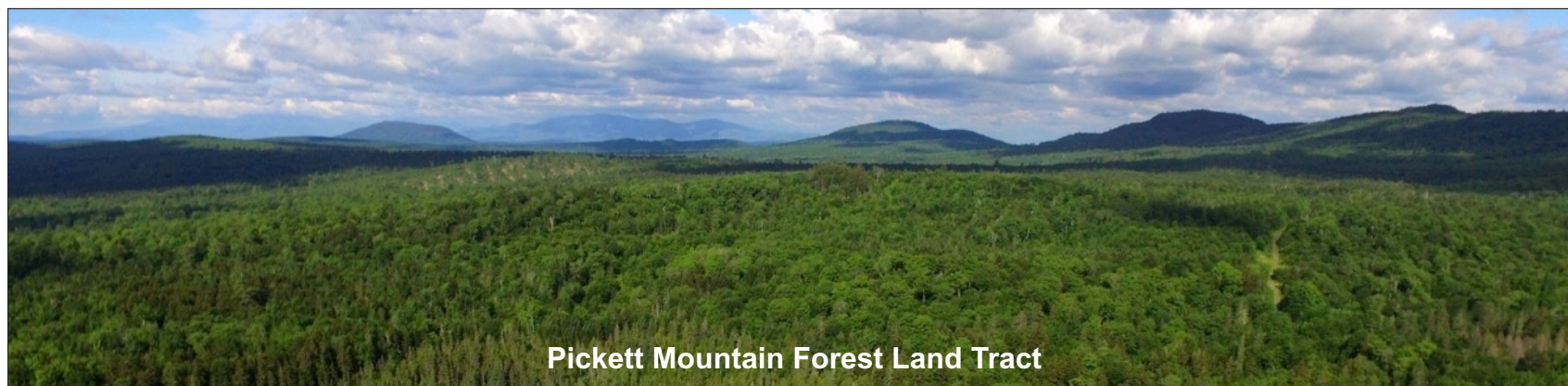


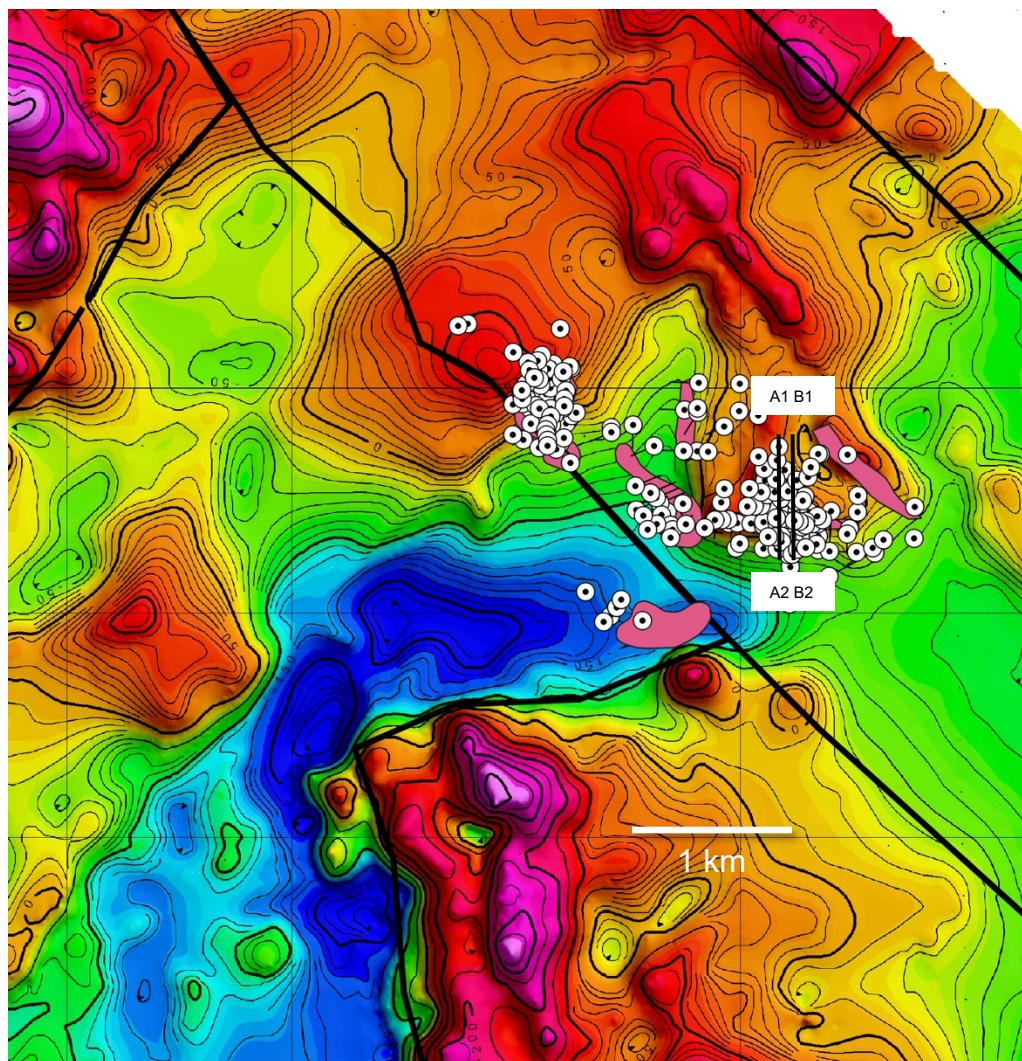
WOLFDEN



PRODUCT	WEIGHT	GRADE					% DISTRIBUTION				
		Cu(%)	Pb(%)	Zn(%)	Au(g/t)	Ag(g/t)	Cu	Pb	Zn	Au	Ag
ORE FEED	100.00	1.60	4.80	12.60	0.94	84.4	100.0	100.0	100.0	100.0	100.0
COPPER CONCENTRATE	5.36	23.10	3.40	2.82	2.31	429.7	77.4	3.8	1.2	13.3	27.3
LEAD CONCENTRATE	7.31	0.35	50.90	8.28	2.63	457.2	1.6	77.5	4.8	20.4	39.6
ZINC CONCENTRATE	20.85	0.86	1.50	53.00	0.56	45.0	11.2	6.5	87.7	12.5	11.1
PLANT TAILINGS	66.48	0.24	0.88	1.19	0.75	27.8	9.8	12.2	6.3	53.8	22.0

- **Preliminary metallurgical work (1984) on drill core produced three floatation concentrates with recoveries of 88% Zinc, 78% Lead and 77% Copper**
- These are excellent recoveries in comparison to most volcanogenic massive sulphide deposits in the North American Appalachians
- Further metallurgical and base line studies will be completed for future economic studies





- Excellent correlation between Silver Mineralization, local magnetic highs and a large magnetic low
- Other potential similar targets in the area
- Airborne data is being re-processed to better define the cross-cutting geological features
- Underscores the rationale for additional ground acquisition
- Section lines A and B plotted

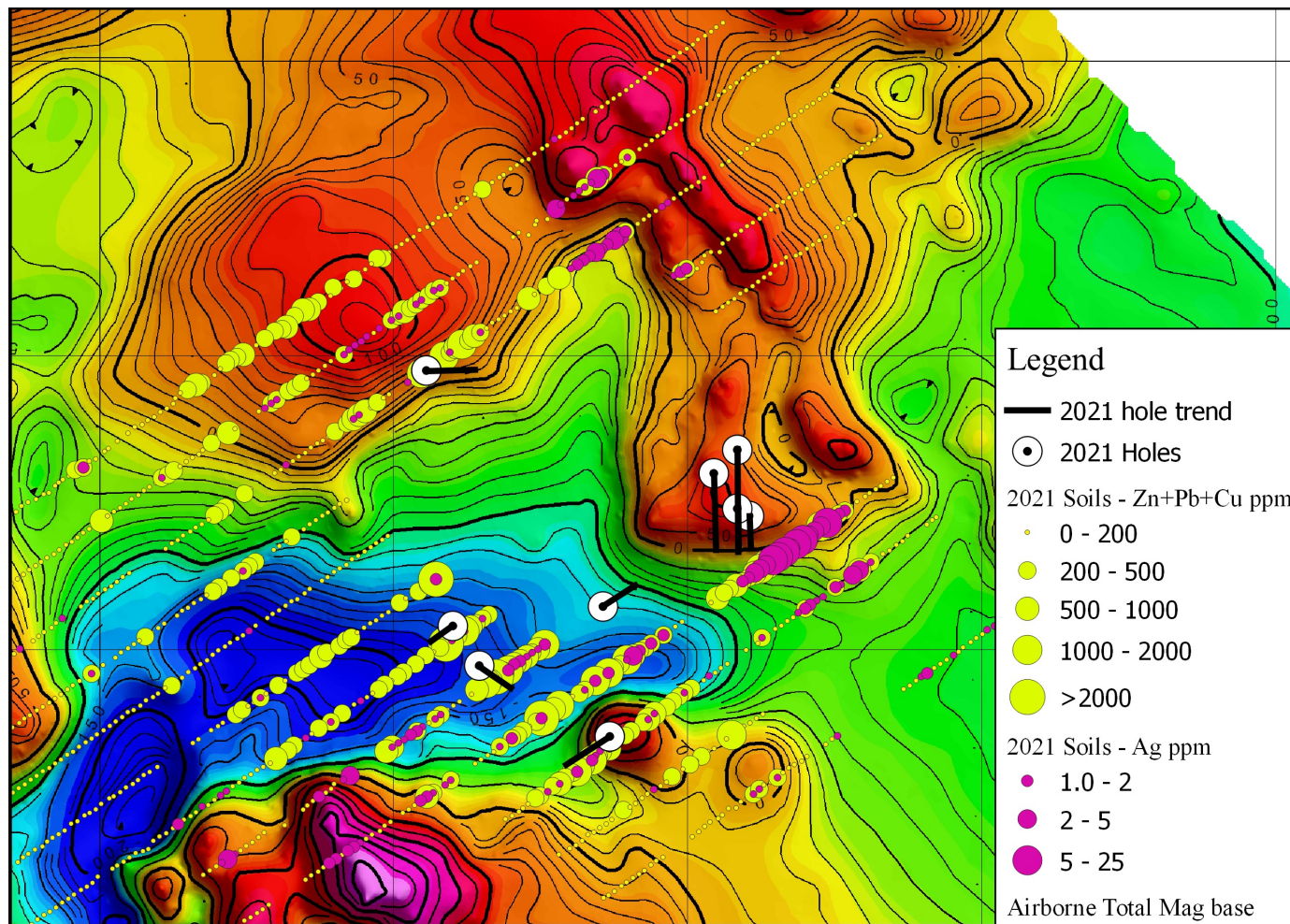


Figure 3. Soil Sample Map 2021— Combined Zn + Pb + Cu ppm and Ag ppm (g/t) on airborne magnetic base

Big Silver Historic Drill Highlights



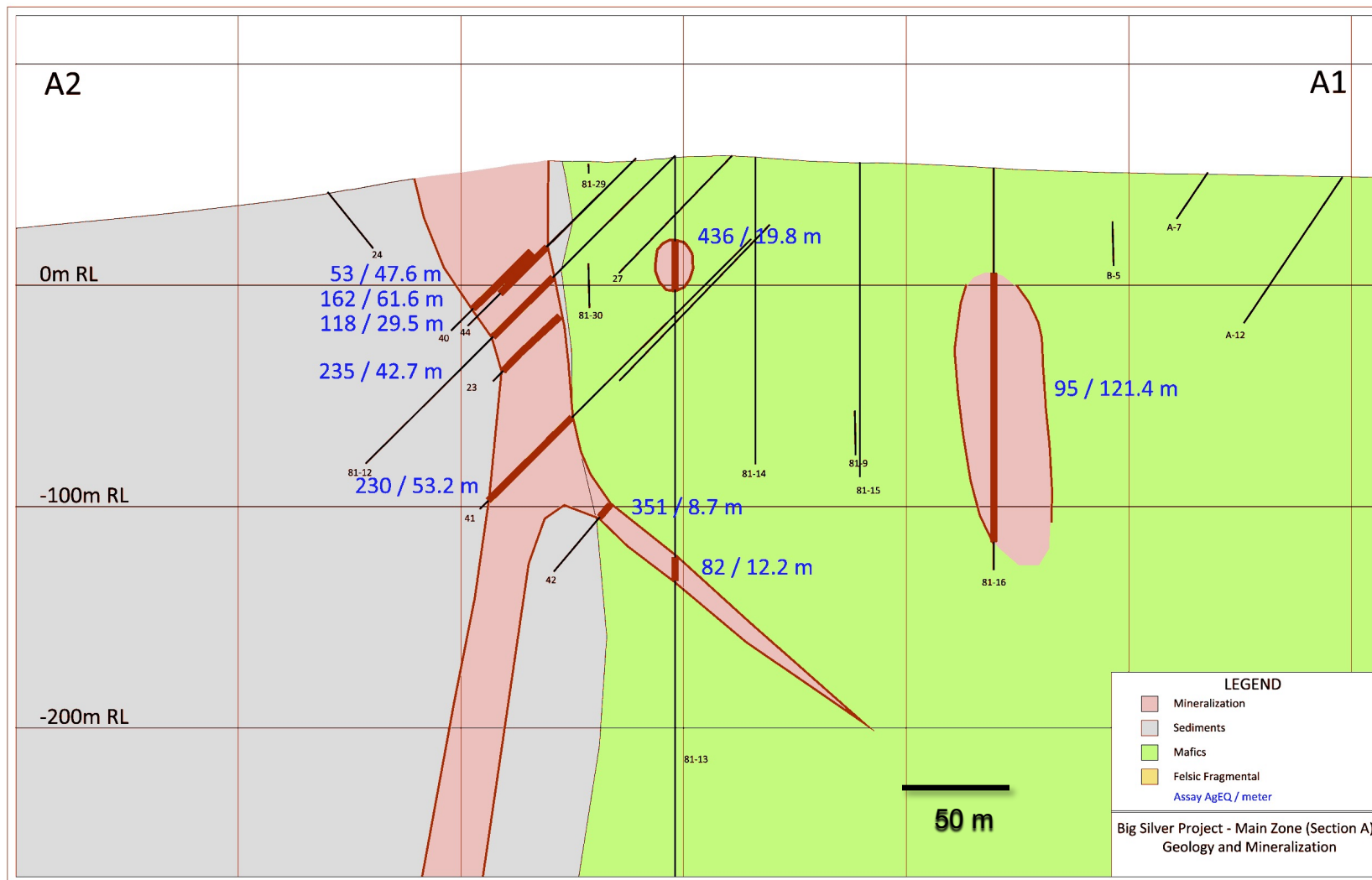
WOLFDEN

Hole ID	From (m)	To (m)	Length (m)	AgEq Oz/t	\$ Value/t	Zn %	Cu %	Pb %	Ag g/t	Zn+Cu+Pb
BH-27	106.7	137.6	30.9	11.77	\$ 212	2.48	0.15	1.07	139.27	3.71
80-1	37.5	86.0	48.5	7.65	\$ 138	2.11	0.03	0.58	116.36	2.71
83-11	10.7	64.3	53.6	6.24	\$ 112	0.96	0.00	0.25	140.76	1.21
BS-41	162.5	203.0	40.5	8.54	\$ 154	1.86	0.22	0.59	133.46	2.66
BS-21	159.2	207.3	48.1	6.88	\$ 124	1.55	0.20	0.31	107.95	2.07
A-8	208.0	301.7	93.6	3.75	\$ 68	1.80	0.00	0.79	4.27	2.59
BS-40	34.4	96.0	61.6	4.96	\$ 89	1.04	0.00	0.38	92.17	1.42
BS-23	93.9	137.6	43.7	7.01	\$ 126	2.07	0.18	0.76	70.64	3.01
81-13	38.6	55.4	16.8	15.60	\$ 281	3.56	0.00	1.14	279.06	4.70
BS-29	150.9	195.6	44.7	5.85	\$ 105	1.81	0.19	1.05	38.16	3.05
83-9	60.7	91.4	30.8	4.93	\$ 89	0.64	0.00	0.17	117.49	0.81
B-1	36.6	61.0	24.4	6.26	\$ 113	0.51	0.00	0.67	146.02	1.18
81-30	24.1	64.0	39.9	3.66	\$ 66	0.41	0.00	0.10	91.41	0.50
BS-34	189.6	243.8	54.3	3.12	\$ 56	1.26	0.13	0.53	4.88	1.92
BS-5	38.9	56.4	17.5	7.93	\$ 143	1.88	0.00	0.32	148.92	2.19
BS-28	119.5	160.6	41.1	3.68	\$ 66	1.33	0.12	0.40	24.46	1.85
BS-32	181.4	207.9	26.5	5.66	\$ 102	2.15	0.13	0.85	30.54	3.13
81-12	77.7	122.0	44.3	3.13	\$ 56	1.35	0.00	0.33	22.71	1.69
A-4	142.8	158.5	15.7	8.72	\$ 157	4.30	0.00	1.42	20.50	5.72
81-16	140.2	160.3	20.1	6.39	\$ 115	3.08	0.08	0.68	23.15	3.84
BS-24	97.1	124.4	27.2	4.43	\$ 80	1.65	0.14	0.57	24.69	2.36
BS-3	69.6	91.0	21.4	5.68	\$ 102	2.99	0.00	0.74	11.87	3.73
BS-34	246.9	288.0	41.1	2.70	\$ 49	1.07	0.14	0.42	3.53	1.62

Big Silver Project – Historical Drill Section



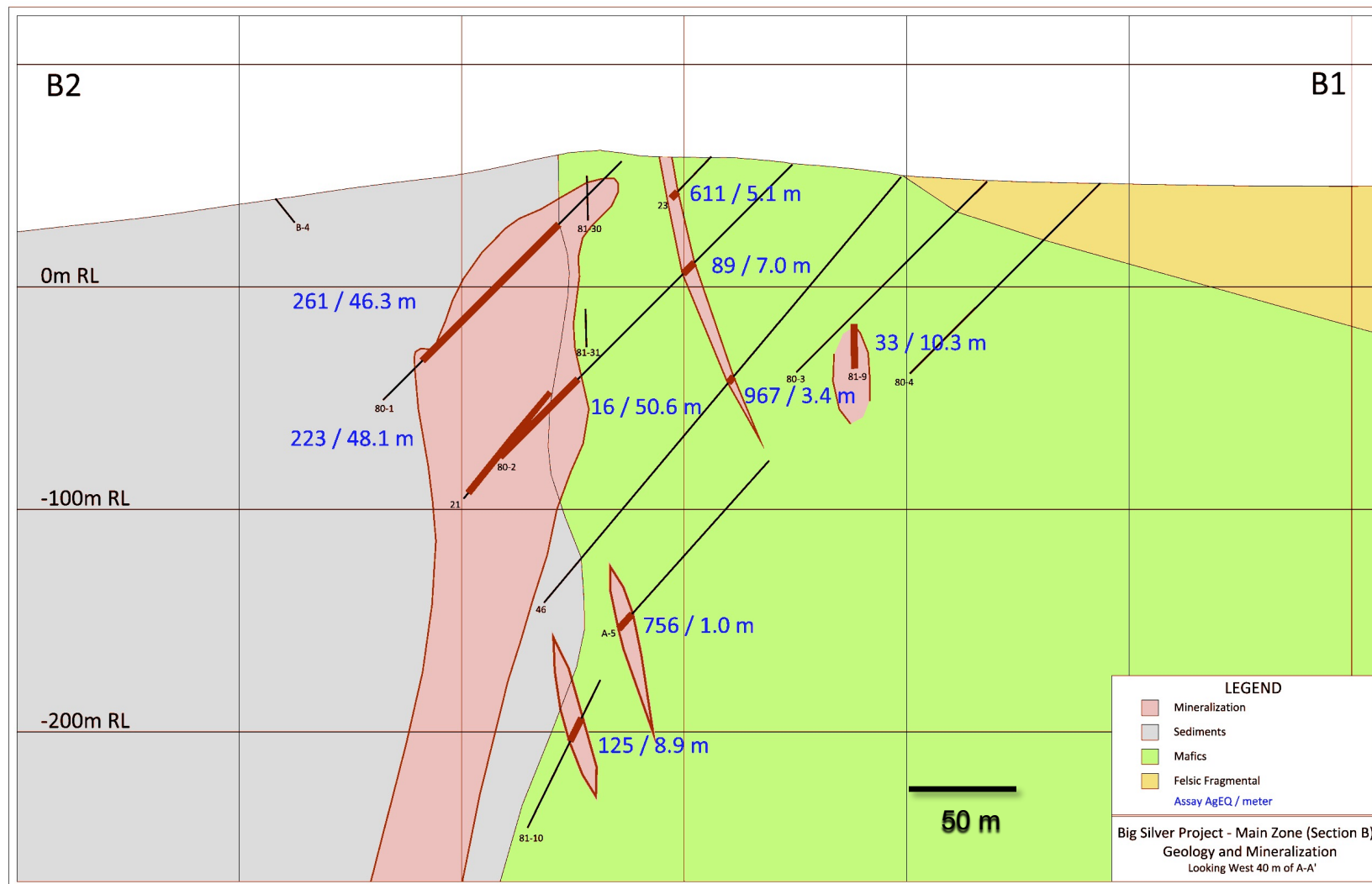
WOLFDEN



Big Silver Project – Historical Drill Section



WOLFDEN



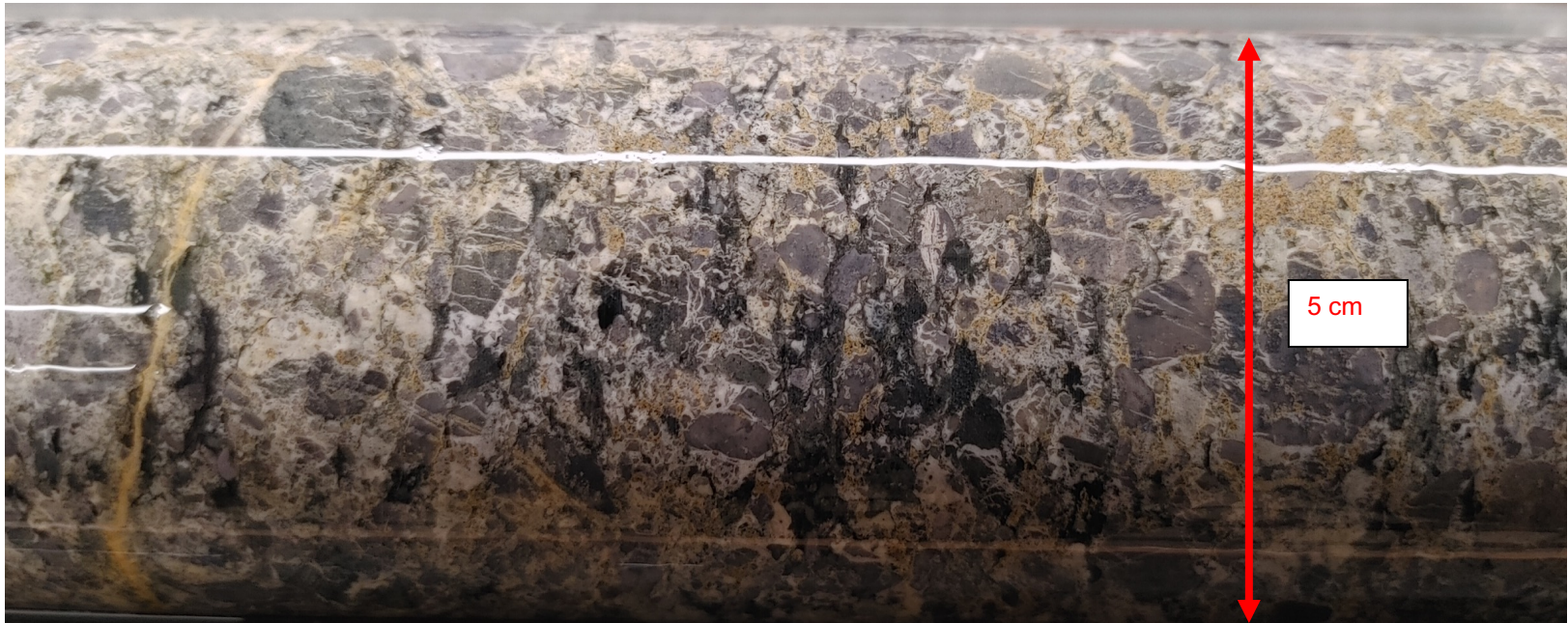
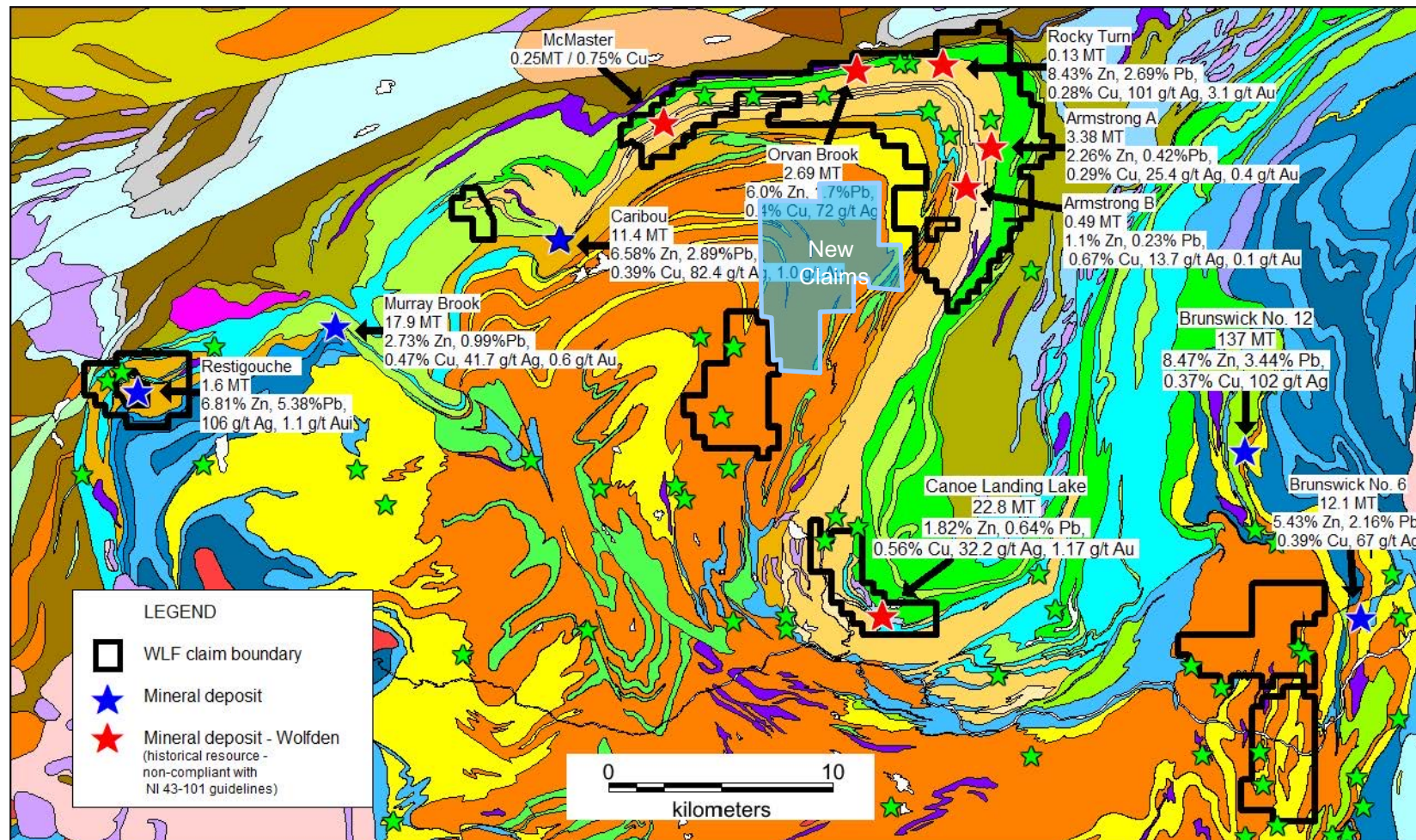
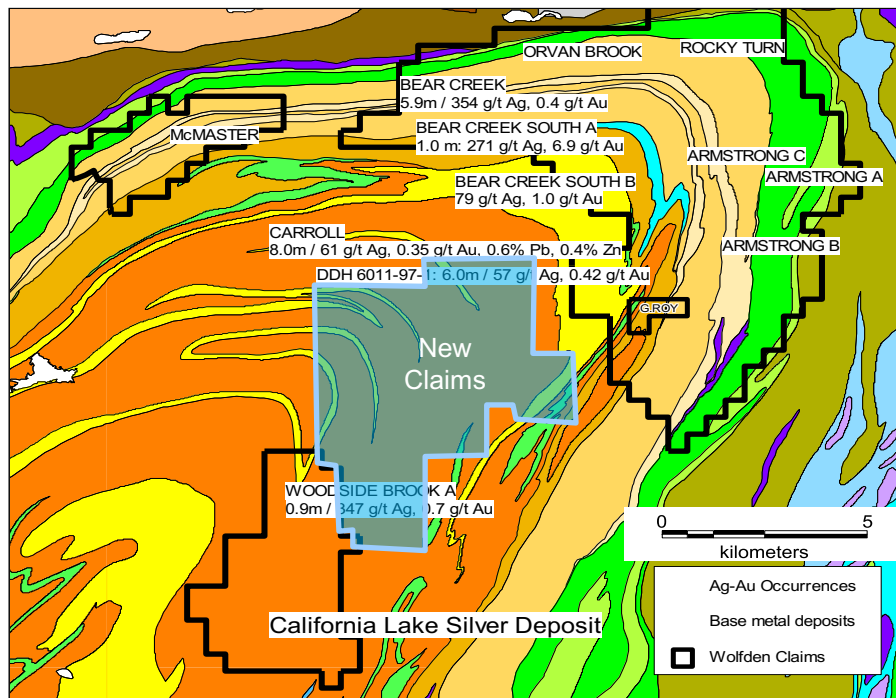


Figure 1. Big Silver Core photo – sedimentary breccia with silicified clasts and 10-15% light brown sphalerite (zinc mineralization)



- Wolfden has a dominant land position in the prolific VMS Bathurst Camp
- 100% interest in 6 historic massive sulphide deposits



California Lake

3.5 m at 579 g/t Ag, 1.13 g/t Au
3.0 m at 442 g/t Ag, 0.72 g/t Au
4.7 m at 459 g/t Ag, 0.45 g/t Au
1 km strike that is open along strike and depth
Au and BM assays incomplete

Woodside Brook

Single hole 0.9 m at 347 g/t Ag, 0.70 g/t Au
Large silver-arsenic soil anomaly associated with the prospect

Carroll

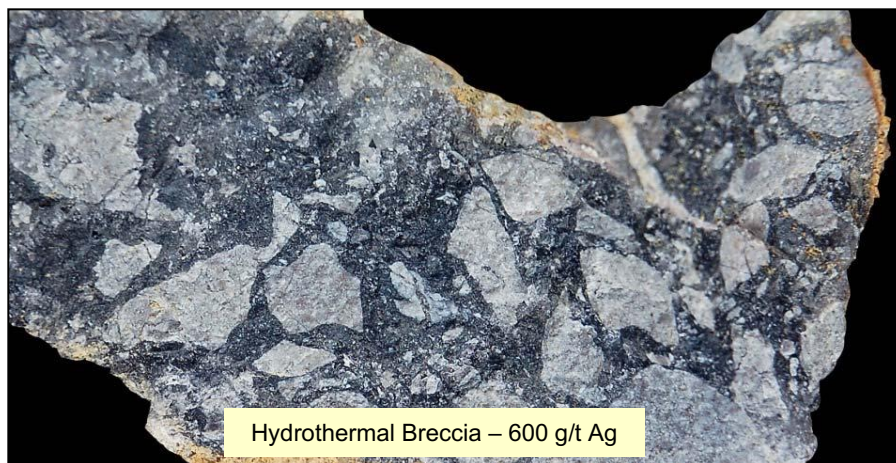
8 m at 61 g/t Ag, 0.34 g/t Au

Bear Creek

5.9 m at 353 g/t Ag, 0.34 g/t Au
7.7 m at 175 g/t Ag, 0.66 g/t Au
9.7 m at 146 g/t Ag, 1.52 g/t Au

Upsalquitch

6 m at 156 g/t Ag, 731 g/t Sb

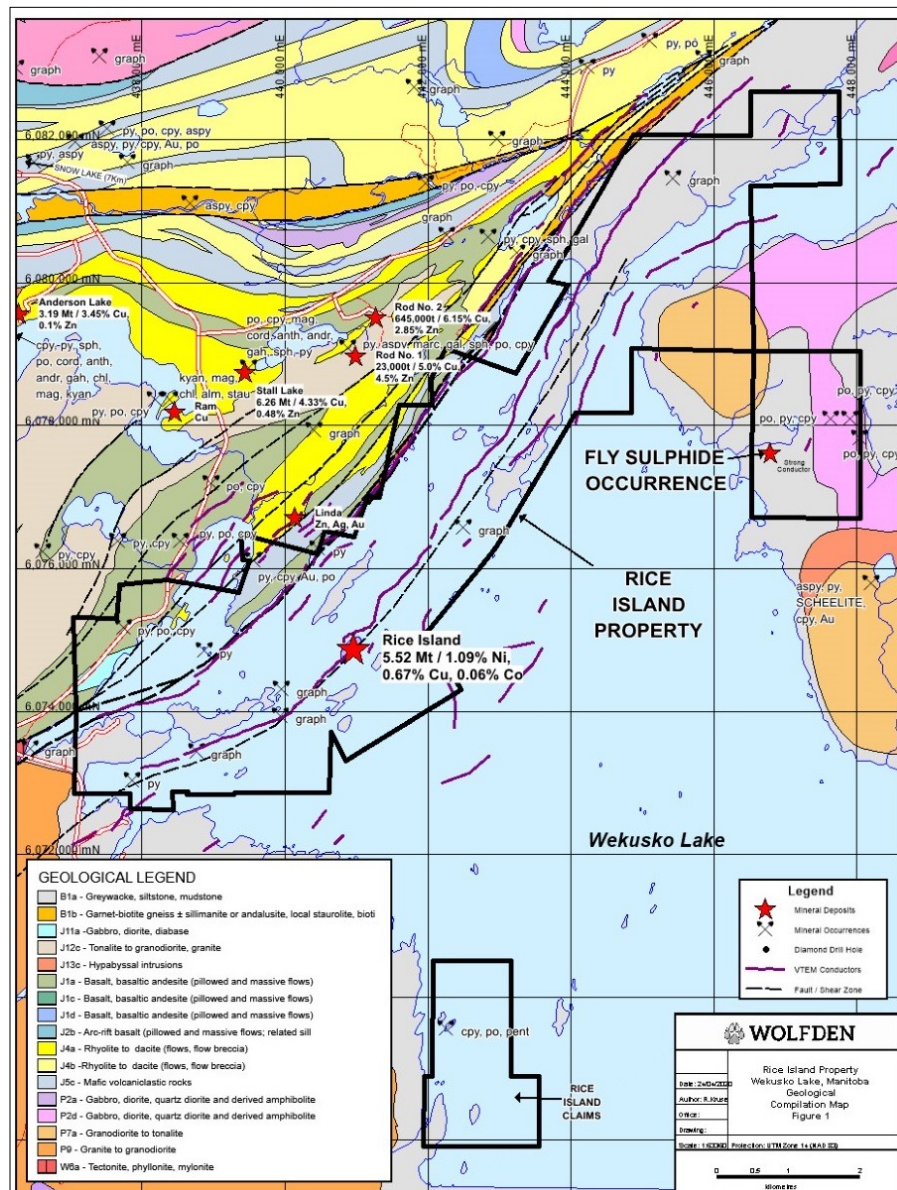


True widths are ~80% of lengths shown

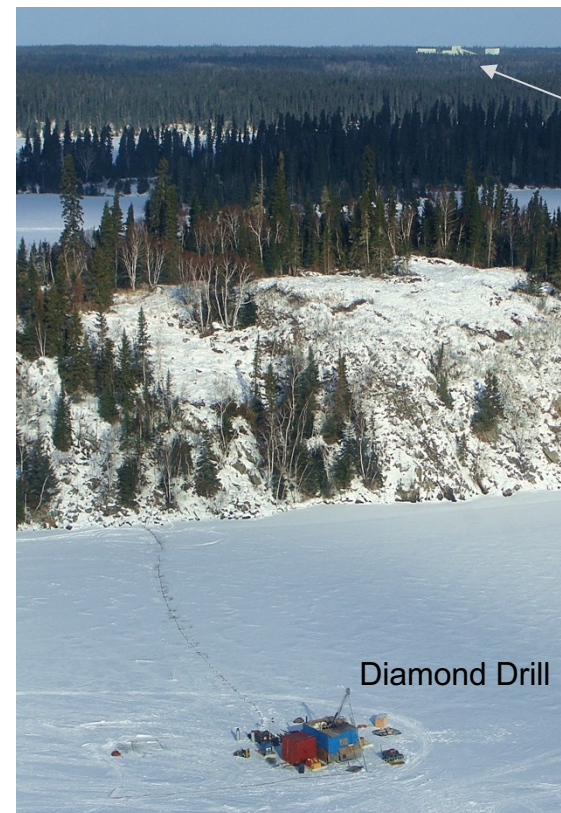


Figure 2. California Lake Zone core photo – multi-stage cross-cutting hydrothermal breccia. Darker areas contain fine grained sulphides including sphalerite, galena, tetrahedrite and arsenopyrite. Fractures, outside of breccia are also sulphide-bearing.

Rice Island Property – High Grade Nickel Sulphide



- 38 km² property near town of Snow Lake
- Ni-Cu-Co deposit associated with a NE-trending magnetic high and coincident conductor (Eastern Magnetic Trend)
- Priority Drill Targets along trends with similar signature to the Rice Island deposit

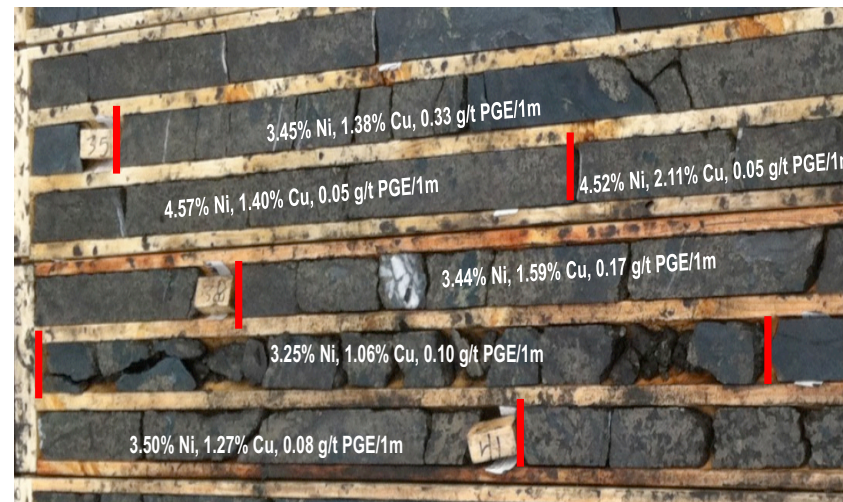
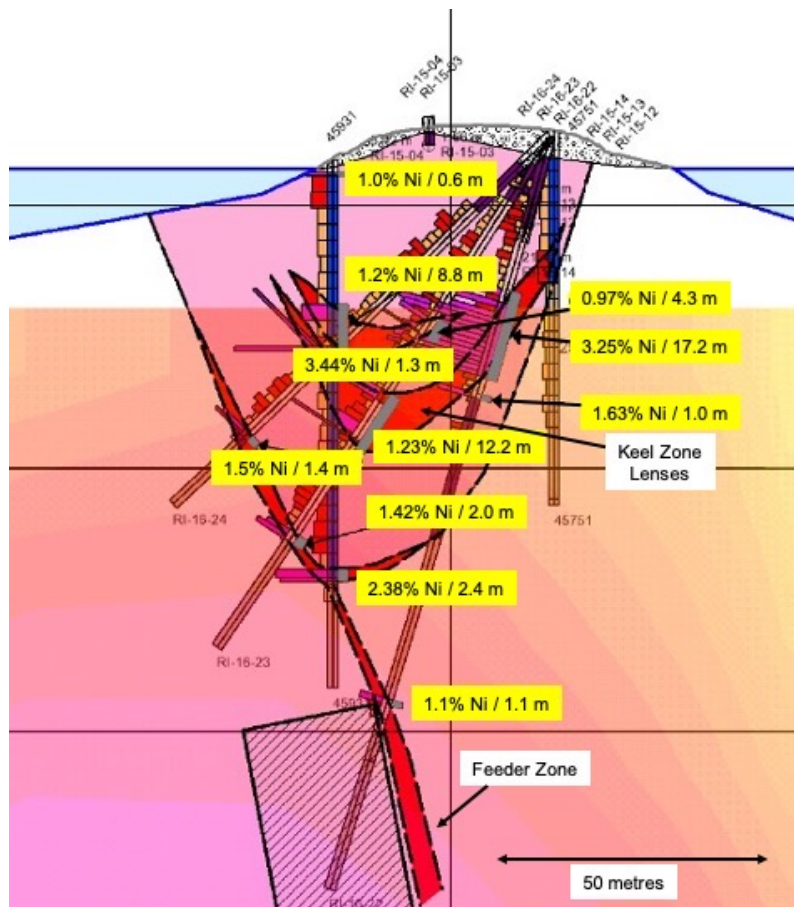


Stall Lake Complex 4km

Rice Island

Diamond Drill

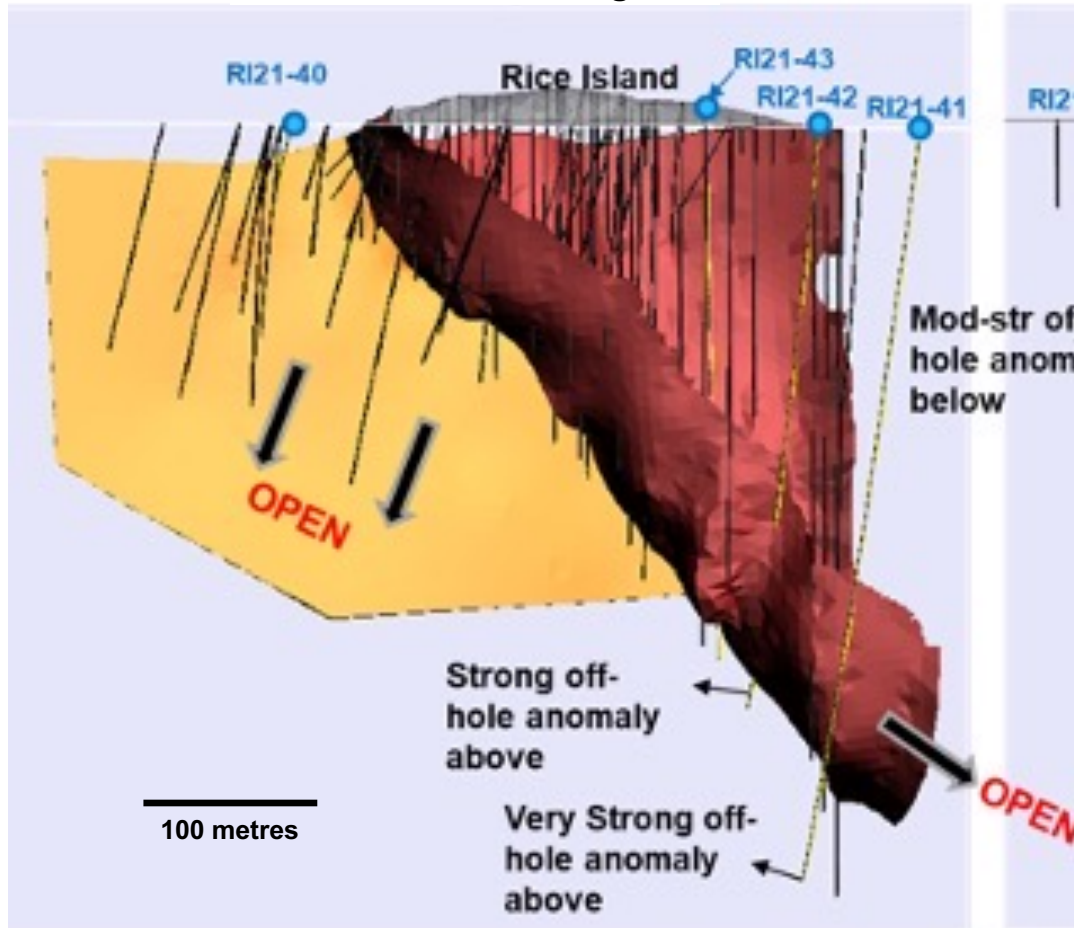
Rice Island Deposit Cross Section



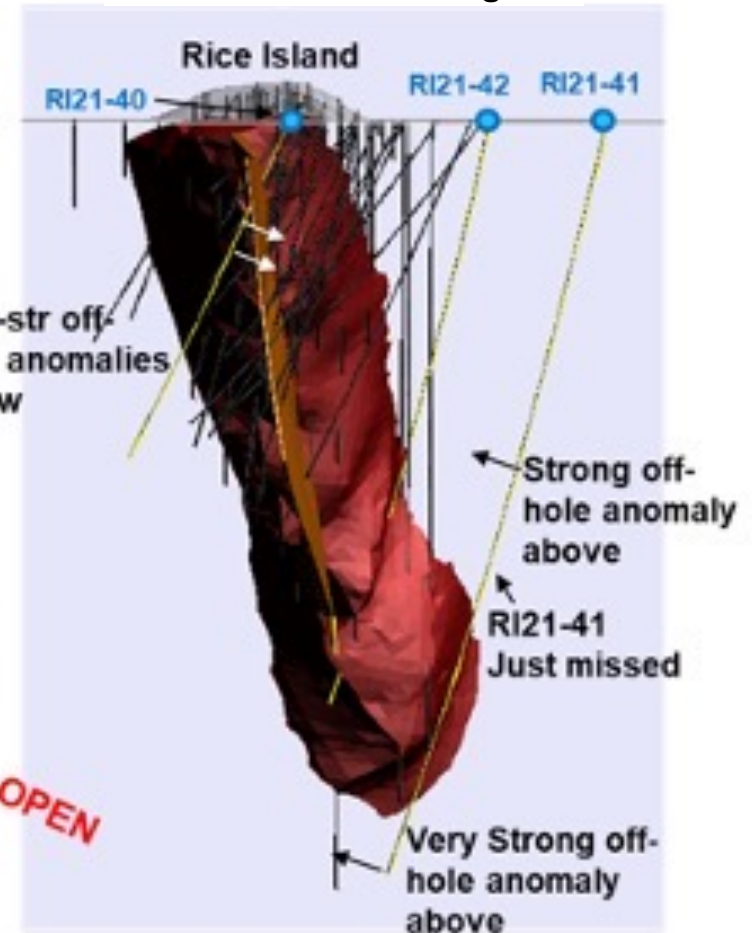
Portion of Hole 16-22
14.7 m at 3.63% Ni, 1.13% Cu, 0.12% Co

- **Keel Zone Open at Depth +480 metres**
- **Several Very Strong Conductors** outside known limits of SW-Trend are untested
- Dec 13, 2021 NI43-101 Mineral Resource Estimate:
4.3 Mt at 1.1% NiEq Indicated
3.7 Mt at 0.9% NiEq Inferred

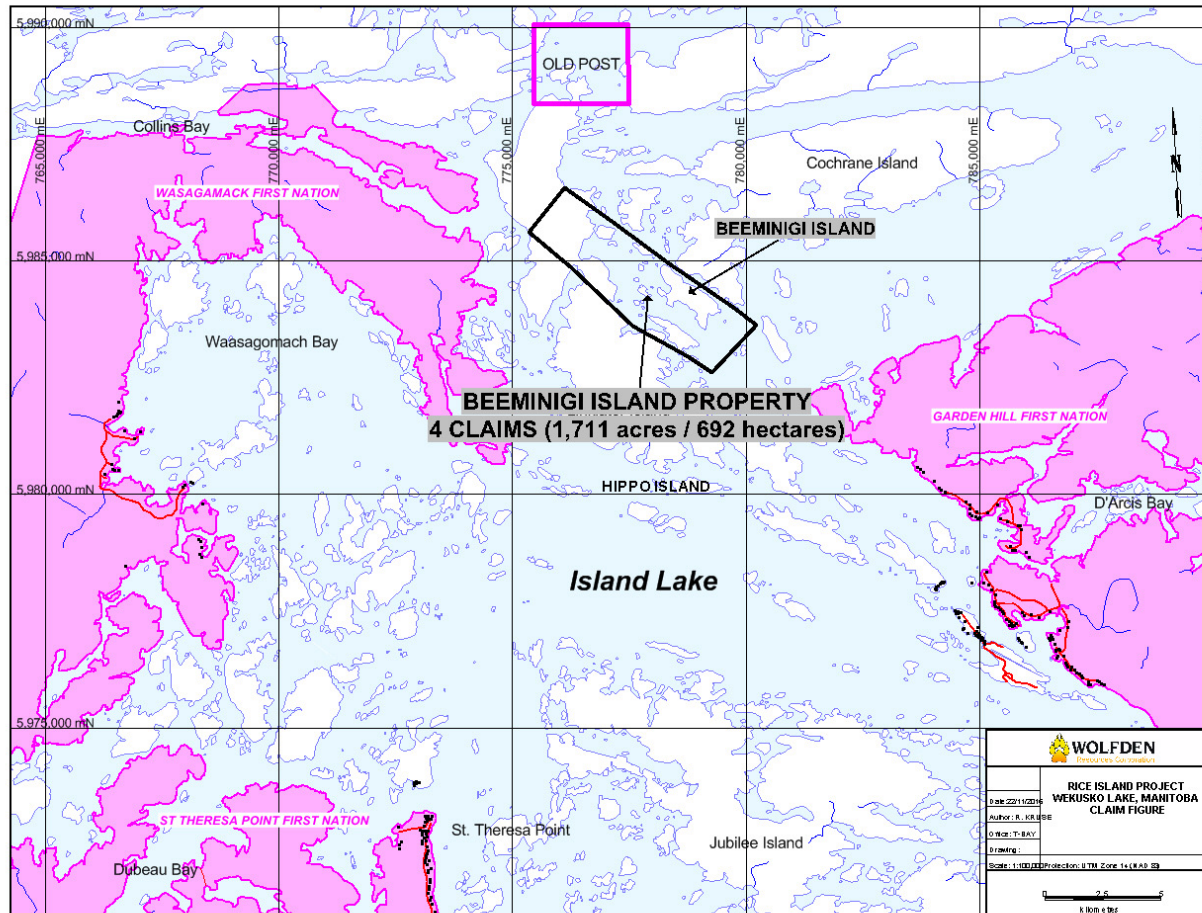
Cross Section Looking NW



Cross Section Looking NE

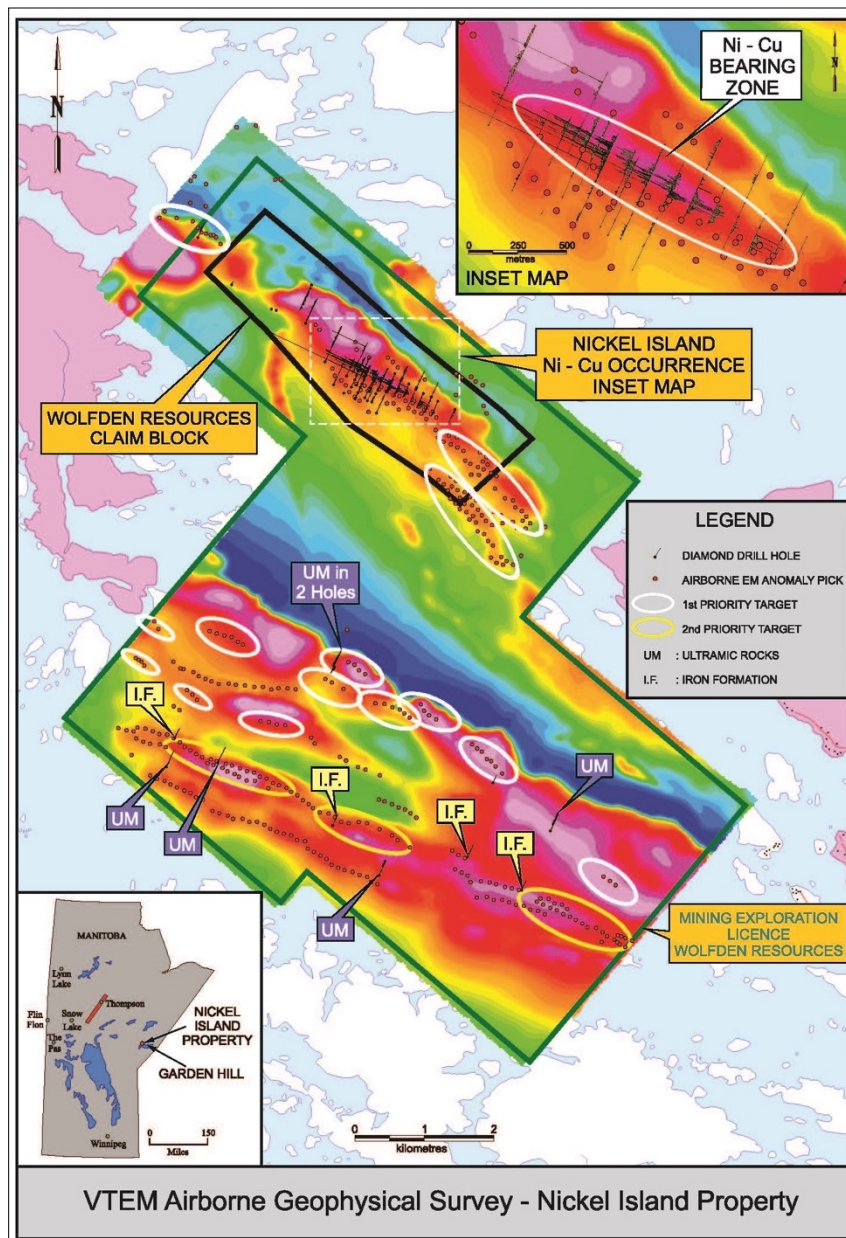


RI21-43: 9 m of 1.20% NiEq; RI21-42: 14 m of 0.80% NiEq; RI21-40: 2m of 1.30% NiEq.



- Initially, exploration will focus on the Beeminigi Island claims, currently held by Wolfden
- This area is located 5 kilometres south of the Old Post (no work to occur in the Old Post area)
- The Partnership will assess other opportunities in due course under an MOU

Nickel Island – High Grade Nickel Sulphide



District-Scale High Grade Nickel Opportunity

- Two large prospective target areas for nickel sulphides defined by airborne geophysics (VTEM)

North Target Area

- Two (1 km) priority drill targets to SE of the Nickel Island occurrence with similar geophysical signatures
- Historic INCO drill intercepts not followed-up:

4.6 m at 4.3% Ni
2.9 m at 3.1% Ni
7.6 m at 1.9% Ni
21.3 m at 1.2% Ni

8.5 Mt at 0.86% NiEq Inferred Resources
NI43-101 Compliant Jan 3, 2022

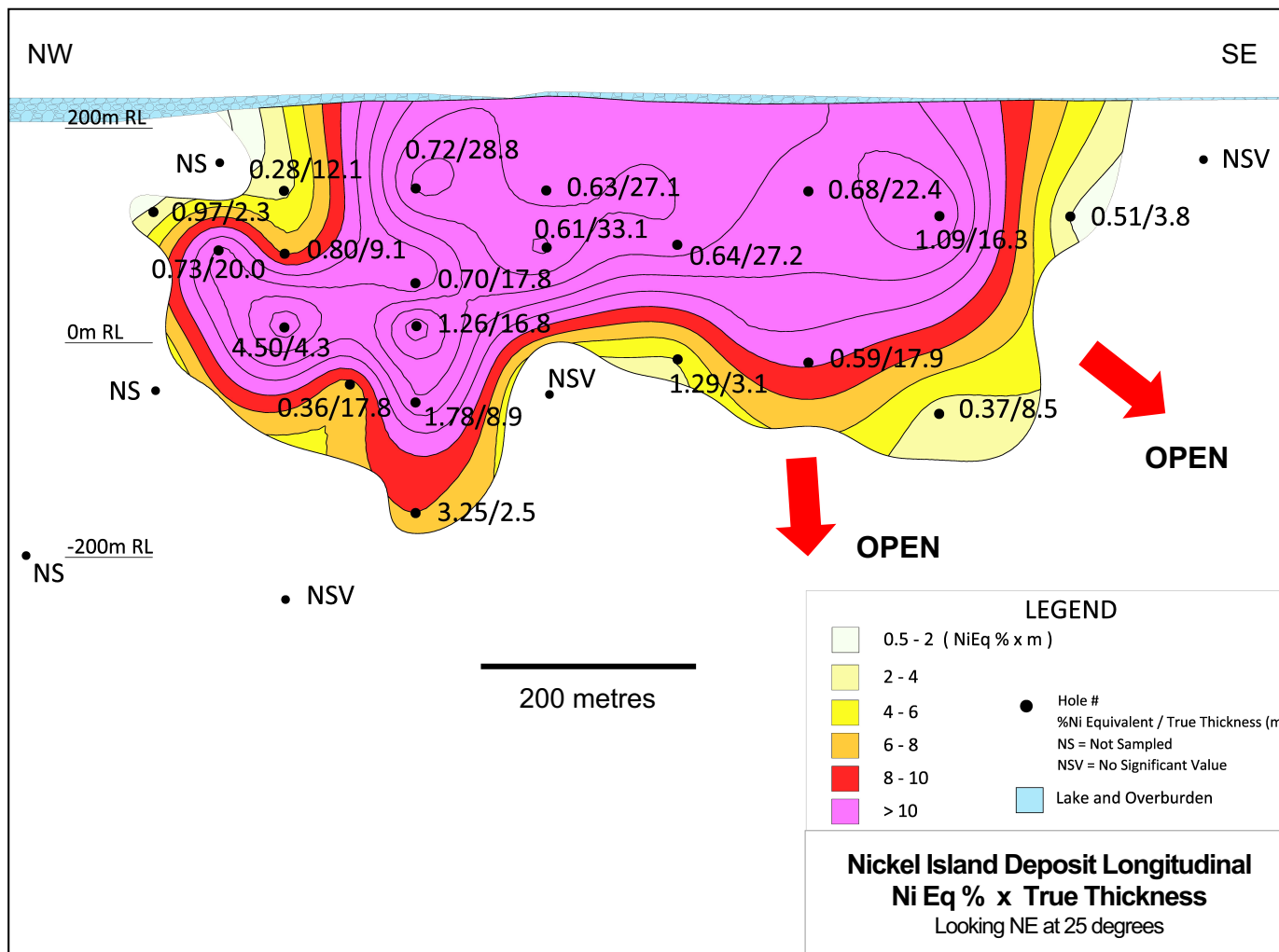
South Target Area

- 10 km magnetic feature with conductors

Joint Venture Agreement with Island Lake Tribunal
Progressing after MOU signed in 2019

Potential Drill Campaign/Demo planned for 2021

Nickel Island - Vertical Longitudinal Section



Contact Details



Ronald Little, P.Eng

President & CEO

Tel: 807-624-1136

Don Dudek, P.Geo

VP Exploration

Tel: 647-401-9138

Jeremy Ouellette, P.Eng

VP Project Development

Tel: 807-624-1134

Rahim Kassim-Lakha

Corp Development

Tel: 416-414-9954

Website: www.wolfdenresources.com



Pickett Mt West Lens



Diamond Drill site



Pickett Mountain Forest Road