

VIOR INC

JUNIOR MINING EXPLORER



TSXV – VIO
OTC – VIORF
FRANKFURT – VL51

Corporate Presentation

JUNE 2022



Because we're a responsible Company, here's the legal

Statements in this document, to the extent not based on historical events, constitute forward-looking statements. Forward-looking statements include, without limitation, statements evaluating market and general economic conditions in the preceding sections, and statements regarding future-oriented costs and expenditures.

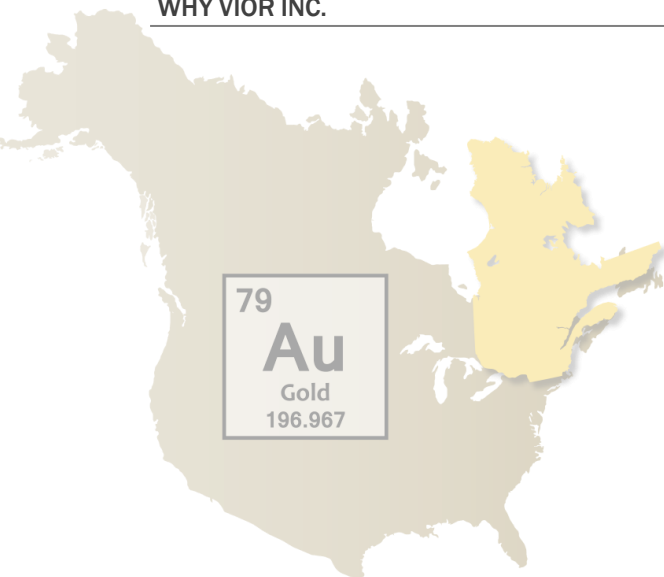
Investors are cautioned not to place undue reliance on these forward-looking statements, which reflect management's analysis only as of the date thereof.

These forward-looking statements are subject to certain risks and uncertainties that could cause actual results to differ materially.

Such risks and uncertainties with respect to the company include the effects of general economic conditions, changing foreign exchange rates and actions by government authorities, uncertainties associated with legal proceedings and negotiations, industry supply levels, competitive pricing pressures and misjudgements in the course of preparing forward-looking statements.

Vior Corporate Profile

WHY VIOR INC.



**VALUE BASED ON
STRONG FUNDAMENTALS**

1. STRATEGY

**Exploration on Multiple
High Potential Gold
Projects**

- Flagship Belleterre Gold project &
- upside on 8 other Promising Gold projects

A Discovery is the Key driver for value creation in an industry known for a low rate of exploration success;

2. SAFE JURISDICTIONS

Precious Metals in Quebec & Nevada

Two of the most attractive mining jurisdictions in the world (Nevada #3 and Quebec #6)*;

3. EXPERTISE

**Highly Committed
Management Team**

Strong Leadership & track record management with a 100+ years experience in the industry and owns a 16%+ equity position;

4. FINANCIAL & TECHNICAL SUPPORT

Strong Project Partners

Osisko Mining, FSTQ, SIDEX, SDBJ, Desjardins, Iluka Resources Ltd., SOQUEM, Ridgeline Minerals Corp.;

5. DIVERSIFICATION

Exploring & Investing

Increased exploration exposure & reduced corporate risk profile via exposure to several potential new discoveries.

*Source: Fraser Institute Survey of Mining Companies 2021 (published in 2022).

Vior Corporate Profile



WHO WE ARE

BOARD OF DIRECTORS

Independent

CLAUDE ST-JACQUES - Chairman

MARK FEDOSIEWICH - President and CEO

Independent

ÉRIC DESAULNIERS

Independent

CHARLES-OLIVIER TARTE

LAURENT EUSTACHE

MANAGEMENT

MARK FEDOSIEWICH – President & CEO

LAURENT EUSTACHE – Executive VP

INGRID MARTIN – CFO

TECHNICAL TEAM

CHRISTIAN BLANCHET, P.Geo. - Operations Manager

MATHIEU GUAY, P.Geo. - Geology Manager

CHAD PETERS, P.Geo. - Technical Advisor

MARC L'HEUREUX, P.Geo. - Technical Advisor

KEN WILLIAMSON, P.Geo. - Structural Geologist Consultant

BY THE NUMBERS

Working Capital* \$2.412 M

(excludes liability premium on FT shares)

Investments in Public Cos.* \$1.337 M

Shares Outstanding* 82,574,749

Market Capitalization \$13.21 M

@ \$0.16/share

Major Shareholders

- Osisko Mining ~ 5.8%



- Management ~ 16.0%

- Quebec Institutions ~ 16.0%



- Close Strategic Holders ~ 30.0%

* As of March 31, 2022

Investments in Public Cos. RDG & ECC

Ridgeline Minerals Corp. RDG :

3.642 M @ \$0.345 valued at \$1.257 M

Vior's Asset Allocation & Diversification

EXPOSURE TO MAJOR EXPLORATION PROJECTS IN NORTH AMERICA



VIOR'S PROJECT GENERATION CRITERIA

- 1- Mining Friendly jurisdictions in North America
- 2- Close to an existing mine/or an advanced project
- 3- Good infrastructure and easy accessibility
- 4- Potential to advance quickly

DISCIPLINE & FOCUS

Vior's disciplined capital and human resources allocation process provides for a strong commitment to its flagship Belleterre Gold project

Vior Focus

VIOR CORPORATE & CAPITAL ALLOCATION

BELLETERRE GOLD PROJECT in 2021

Summer Field Exploration	Completed
High Resolution Mag	Completed
Compilation	Ongoing
3D Modeling	Completed
Drilling Phase I (3,858m)	Completed
<i>Results released</i>	
Drilling Phase II (4,197m)	Completed mid-April
<i>Results pending</i>	

Vior Diversification

SEEKING STRATEGIC PARTNERS

OTHER QUEBEC GOLD PROJECTS

ADVANCED



GREENFIELD

Mosseau
Ligneris

Veza-Noyard

Skyfall

PASSIVE STRATEGY

STRATEGIC INVESTMENT

Ridgeline Minerals Corp. RDG-V

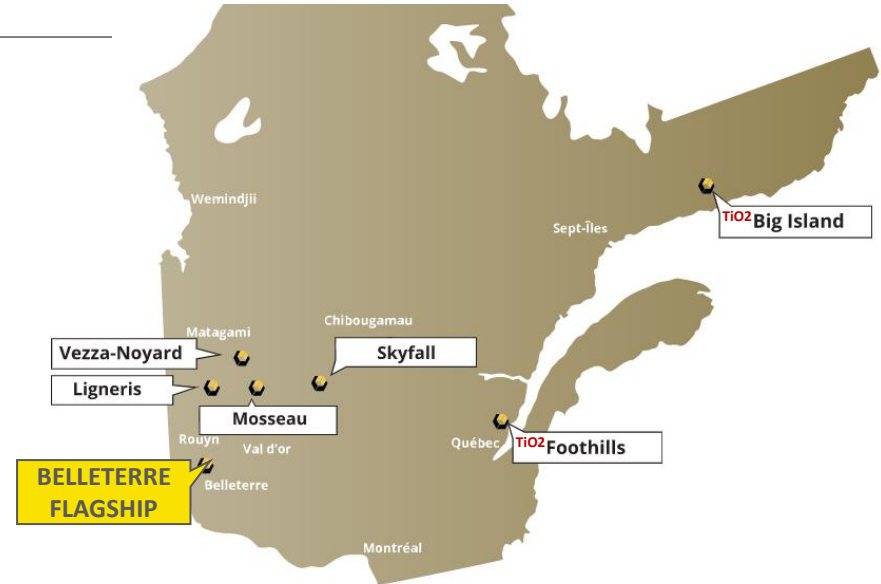
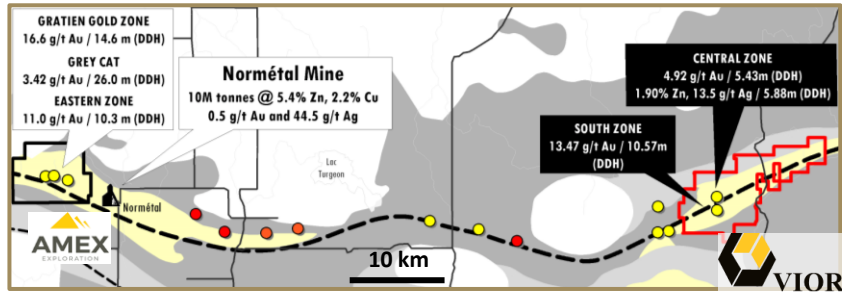
- Quality Projects & Management
- VIOR owns 6.5% equity interest (3.642 M Shares)

Projects – Overview

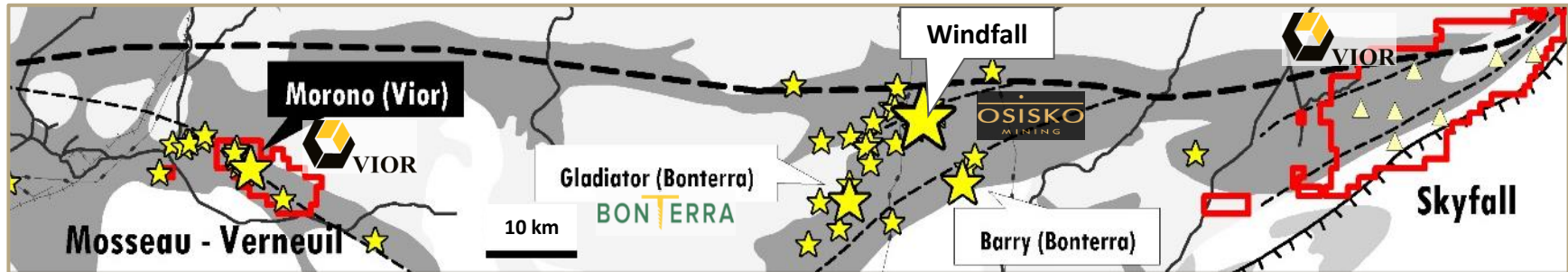
EXPOSURE TO OTHER MAJOR EXPLORATION PROJECTS IN QUEBEC



LIGNERIS PROJECT Laflamme Volcanic Corridor



SKYFALL & MOSSEAU Urban-Barry gold Corridor



Belleterre Gold Project Opportunity

BELLETERRE FLAGSHIP HIGH-GRADE GOLD PROJECT



1. UNIQUE LOCATION

- Quebec - Greenstone Belt
- Heart of Quebec's mining industry
- Access & Infrastructures

2. HIGH-GRADE GOLD POTENTIAL

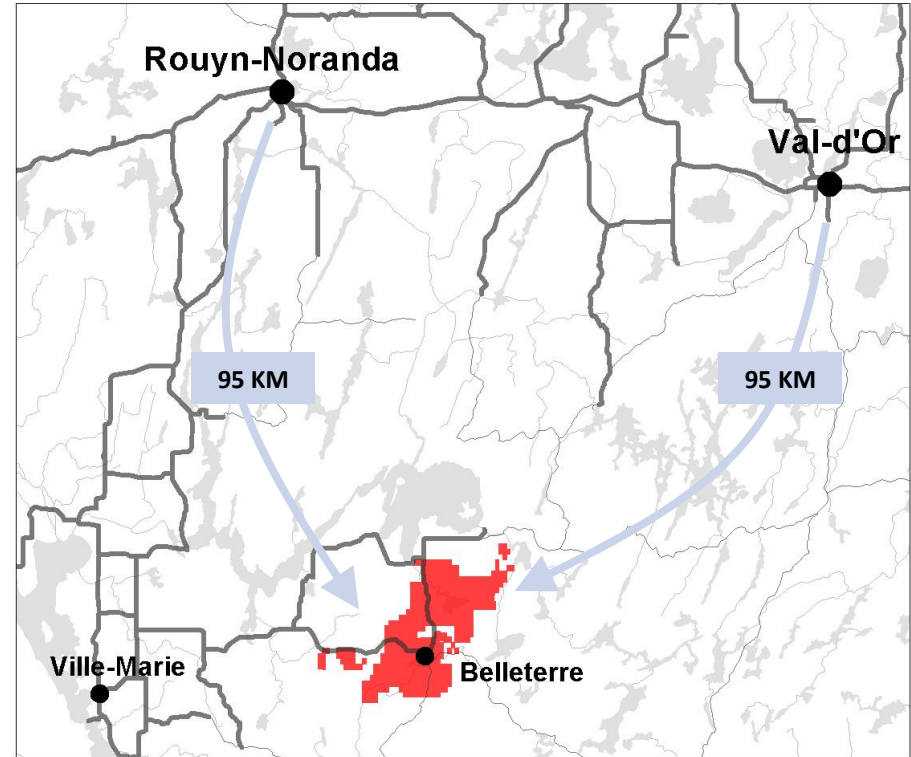
- Proven Mining Belt
- Former past producing Belleterre Gold Mine Over 750Koz Au @ 10.7g/t Au (Sigeom MERN)
- Up to 20 known High-Grade Gold Veins

3. UNIQUE SIZE

- District-Scale – 37 km of Favorable Strike
- 551 claims - 300 Km²
- Over 10 acquisition and Option/JV agreements

4. UNIQUE OPPORTUNITY

- Multi-deposit potential
- Shallow drilling only
- Has never been:
 - Consolidated
 - Explored using modern Techniques



Belleterre Growth Opportunity

BELLETERRE FLAGSHIP HIGH-GRADE GOLD PROJECT

1. HIGH POTENTIAL GOLD PROJECT

Using a systematic exploration process in the never before consolidated & past producing high grade Belleterre mining camp.

2. LOWER RISK EXPLORATION OPPORTUNITY

Flagship Belleterre gold project is the excellent result and example of Vior's project generation criteria.

3. PROVEN VALUE CREATION STRATEGY

M&A ACTIVITIES

- Osisko (Cdn. Malartic mine)
- Detour Gold (Detour mine)
- Integra (Lamaque mine)

Belleterre Project – Overview



STRATEGIC DISTRICT-SCALE GOLD PROJECT

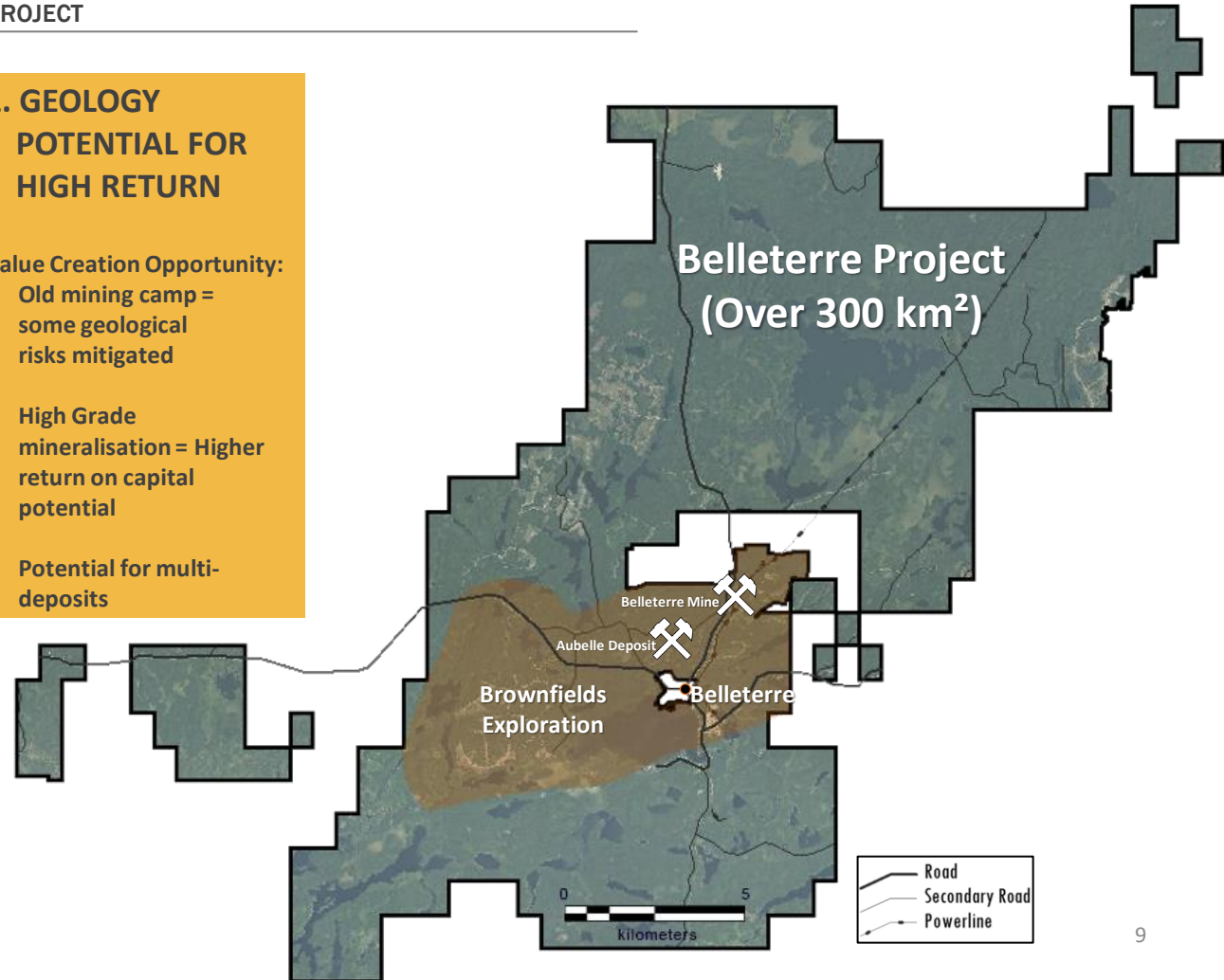
1. LOCATION COMPETITIVE ADVANTAGES

- Lower cost of Exploration: all-in drilling costs 2021 of \$160/metre
- Lower threshold for economic potential and opportunity
- Year round easy access and excellent infrastructure nearby

2. GEOLOGY POTENTIAL FOR HIGH RETURN

Value Creation Opportunity:

- Old mining camp = some geological risks mitigated
- High Grade mineralisation = Higher return on capital potential
- Potential for multi-deposits



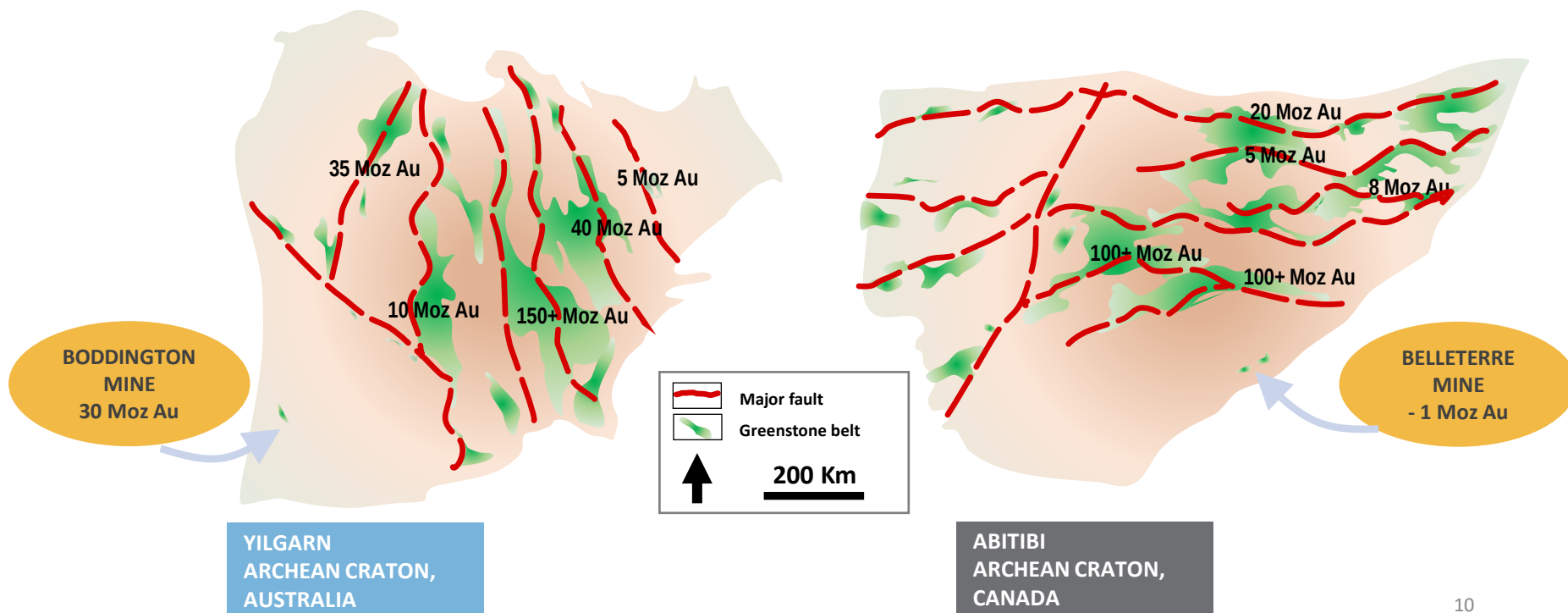
Belleterre Project – Geological Context



BELLETERRE - A FORGOTTEN AND UNDEREXPLORED GREENSTONE BELT ?

BELLETERRE A UNIQUE LOCATION

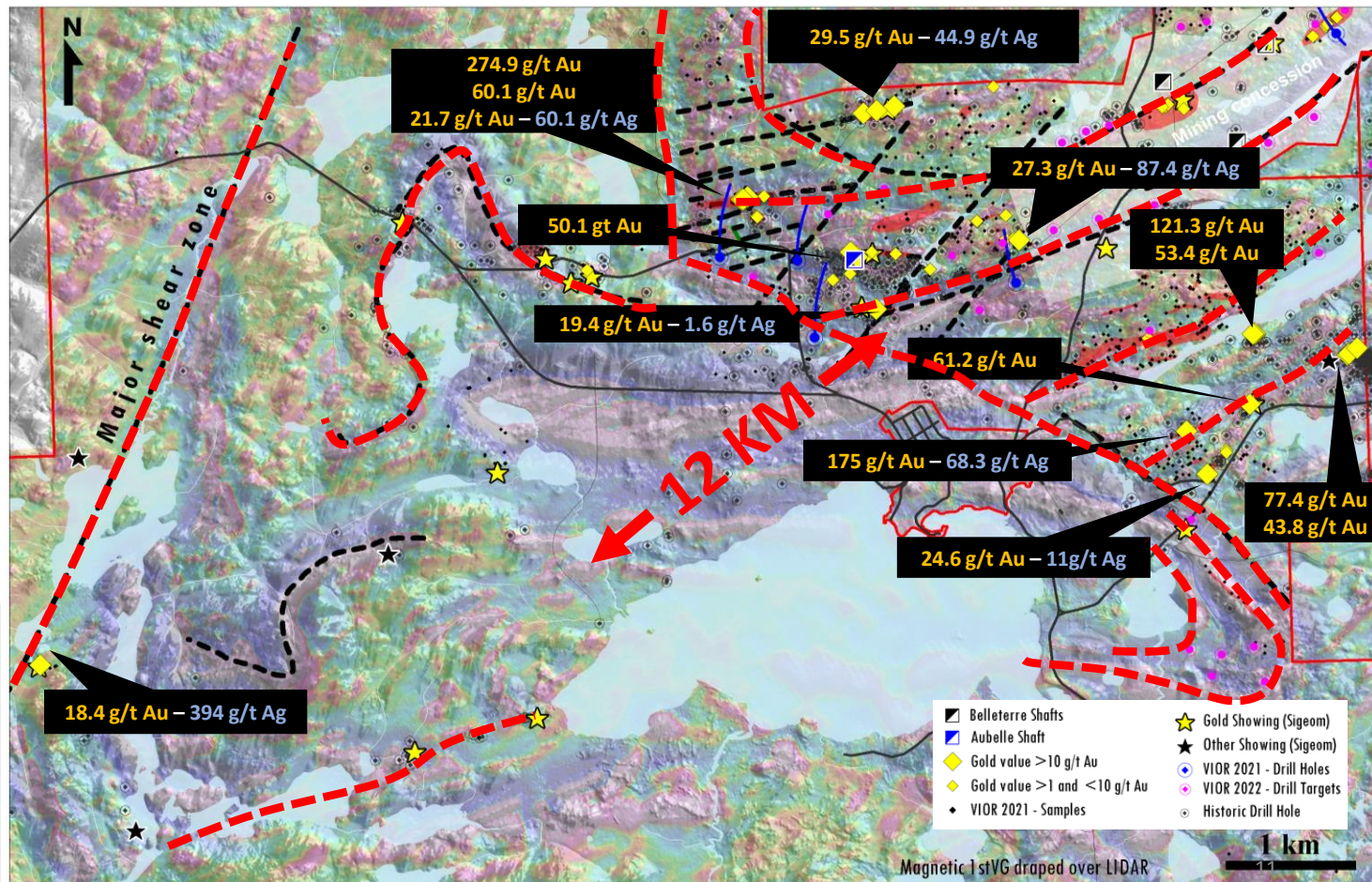
Belleterre is located at the edge of an Archean Craton, outside of a major fault in a small greenstone belt just like the Boddington mine discovered in 1979 in Australia.





Belleterre Project - Brownfield Area

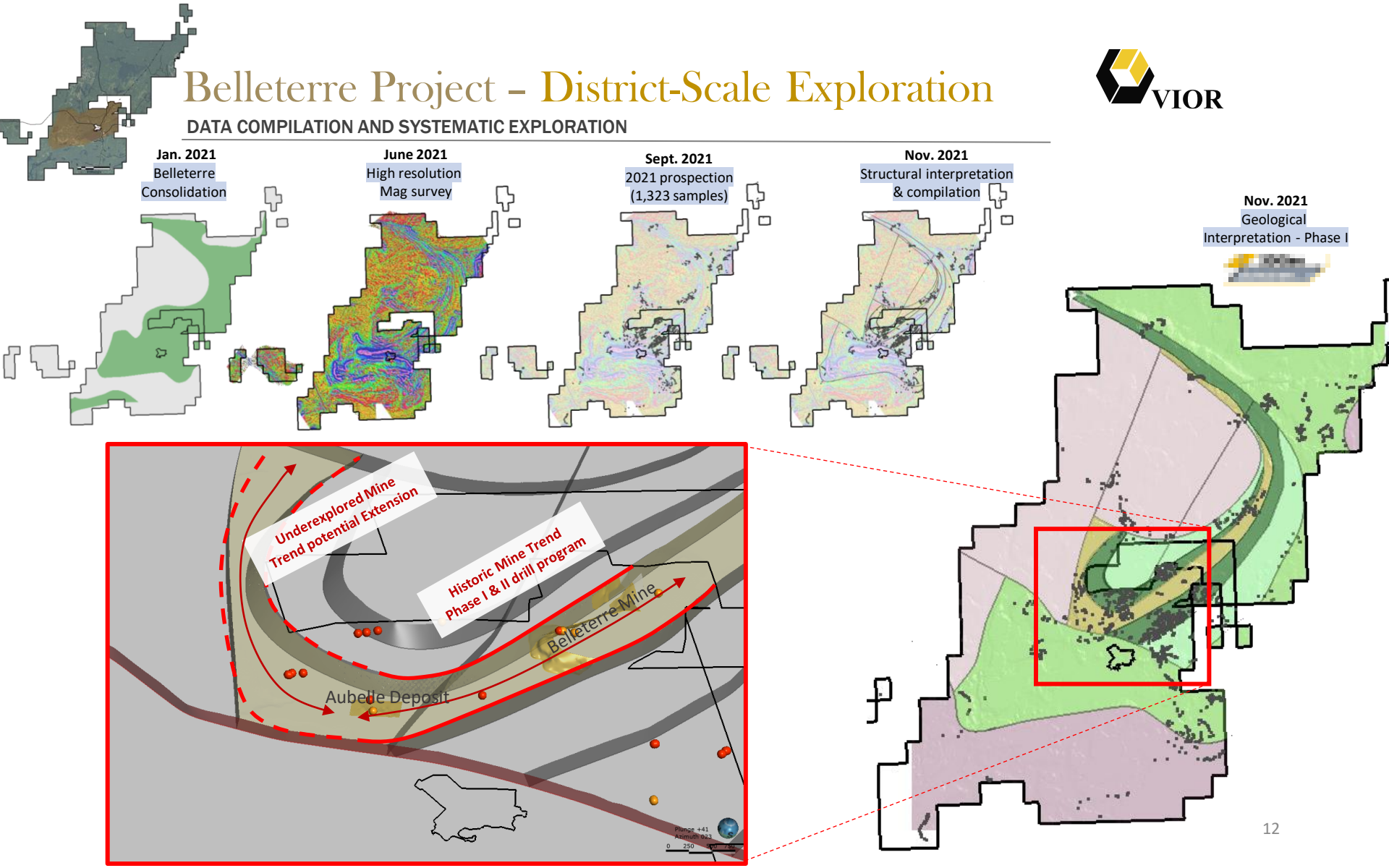
VIOR CONFIRMS HIGH GRADE GOLD RESULTS AT SURFACE (2021 BEST VALUES)

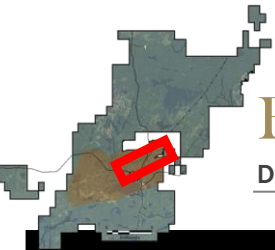


Belleterre Project – District-Scale Exploration



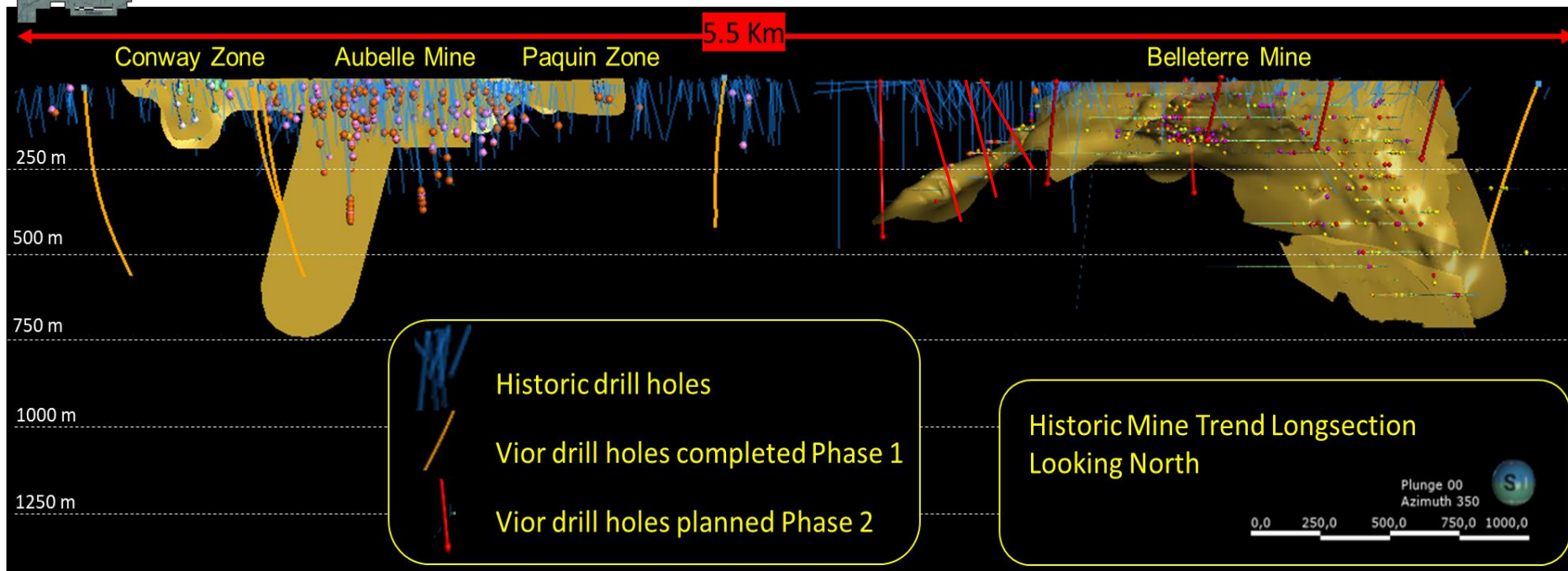
DATA COMPILATION AND SYSTEMATIC EXPLORATION





Belleterre Project – Historic Mine Trend

DRILL PROGRAM PHASE I & II AND 3D MODELING



PHASE I - drill program **3,858 m - 5 holes**

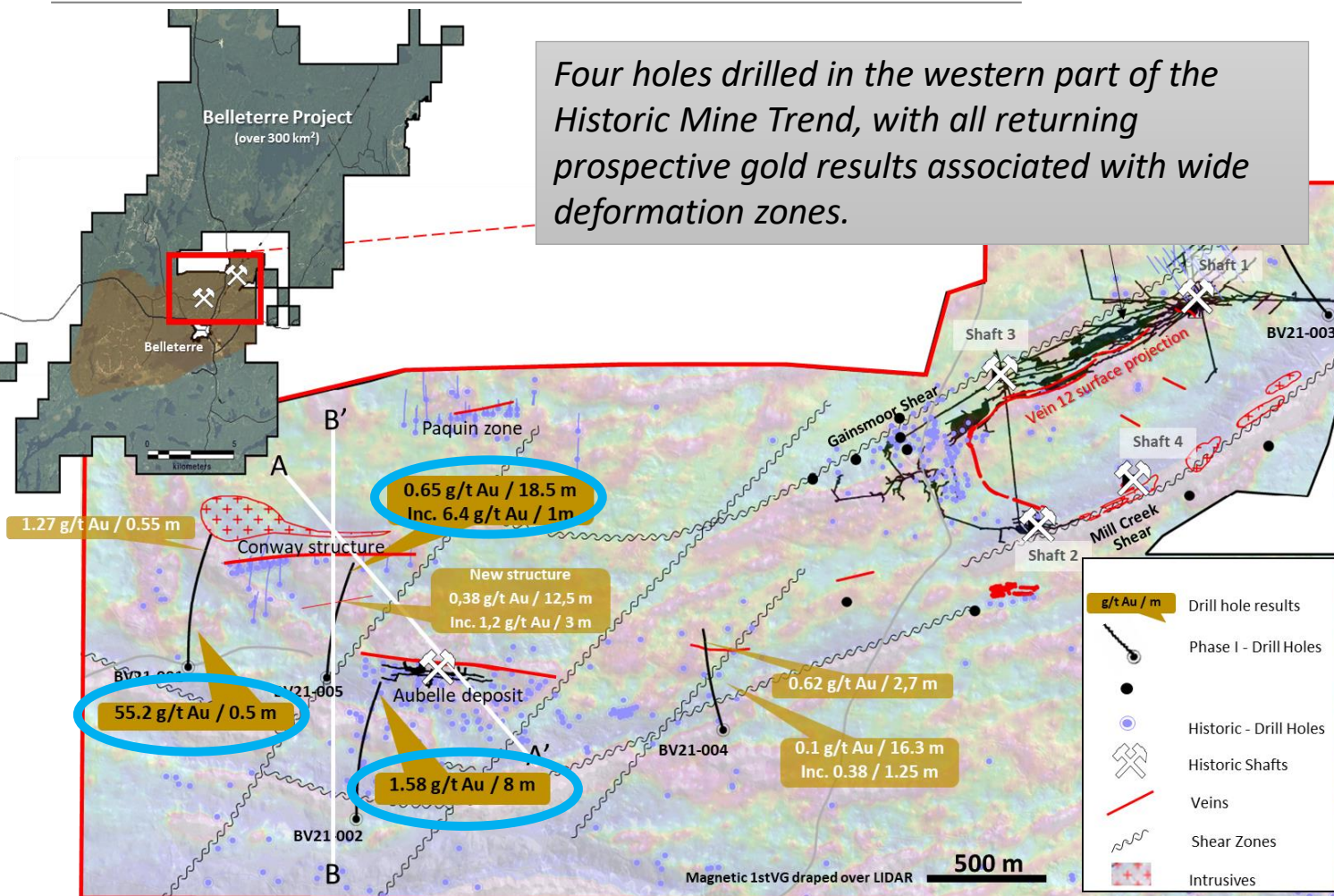
PHASE II - drill program **4,197 m – 10 holes**

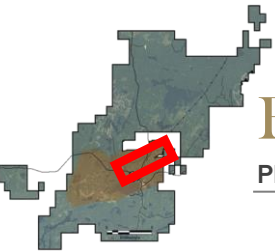
Belleterre Project – Historic Mine Trend



PHASE I DRILL PROGRAM : RESULTS (April 2022)

Four holes drilled in the western part of the Historic Mine Trend, with all returning prospective gold results associated with wide deformation zones.



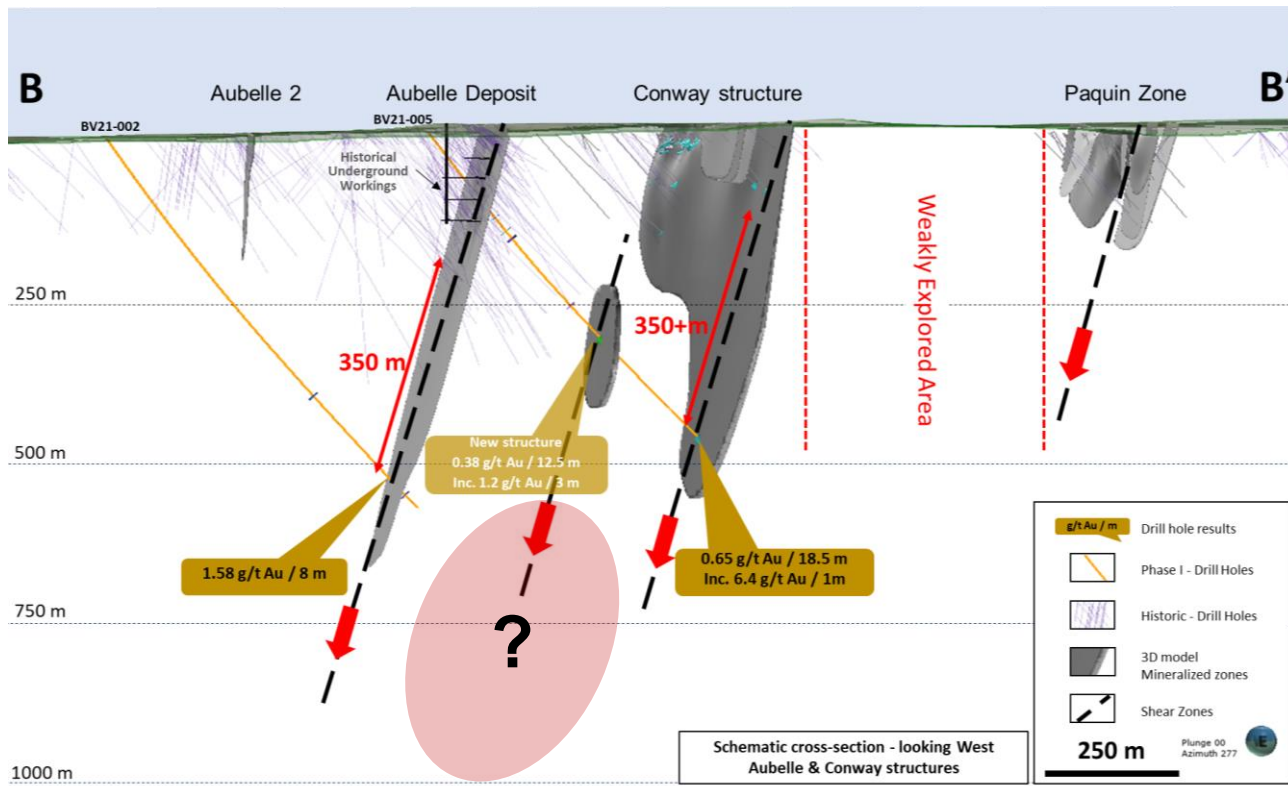


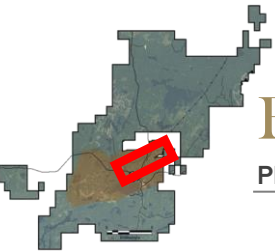
Belleterre Project – Historic Mine Trend

PHASE I DRILL PROGRAM : 3D MODELING & RESULTS



Phase I drill program results demonstrated wider mineralized intercepts, suggesting gold-bearing structures are thickening at depth. It represents an important step towards de-risking the project and demonstrates the strong exploration potential.





Belleterre Project – Historic Mine Trend

PHASE I DRILL PROGRAM : RESULTS



BV21-002 : Aubelle - Mineralisation & Gold distribution

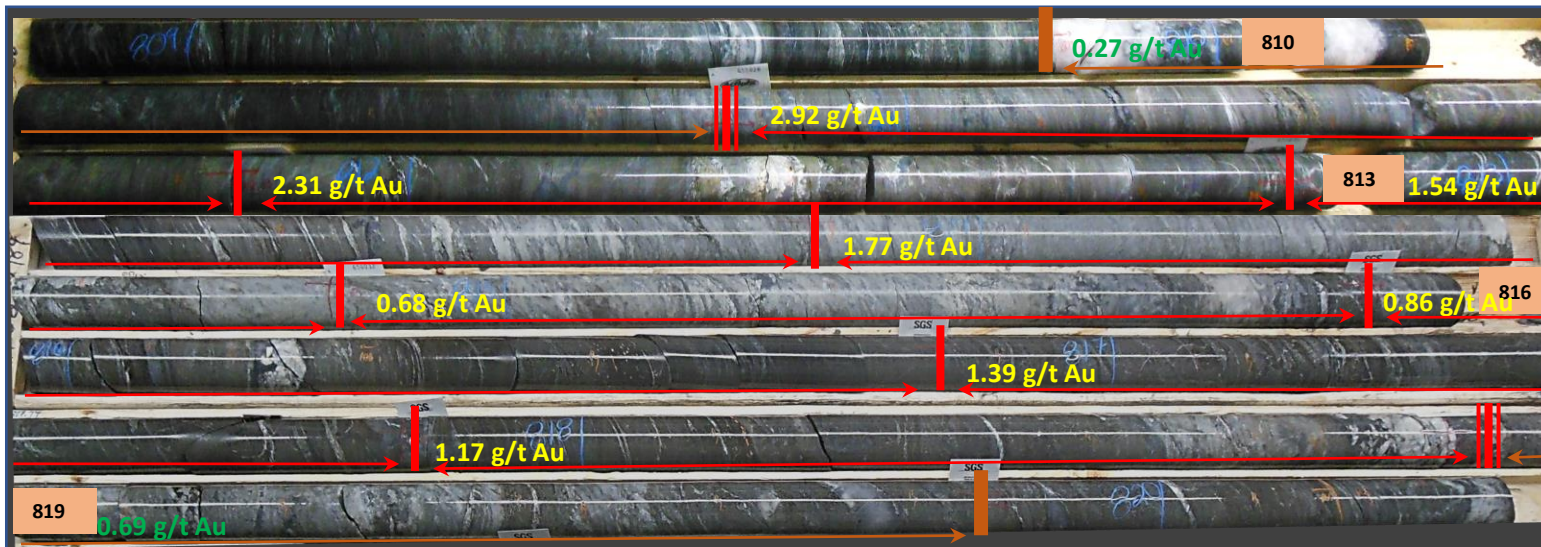
From	To	Length	Au g/t
809.83	810.83	1.0	0.269
810.83	811.83	1.0	2.916
811.83	812.83	1.0	2.313
812.83	813.83	1.0	1.54
813.83	814.83	1.0	1.774
814.83	815.83	1.0	0.683
815.83	816.83	1.0	0.858
816.83	817.83	1.0	1.393
817.83	818.83	1.0	1.167
818.83	819.83	1.0	0.687
819.83	820.83	1.0	0.375

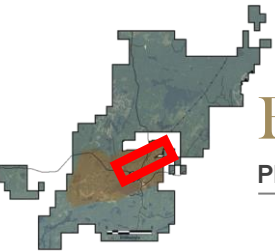
1.58 g/t Au / 8 m



Mineralization at depth unveils quartz flooding associated with PY & PO, and looks like a classic Archean Lode gold zone.

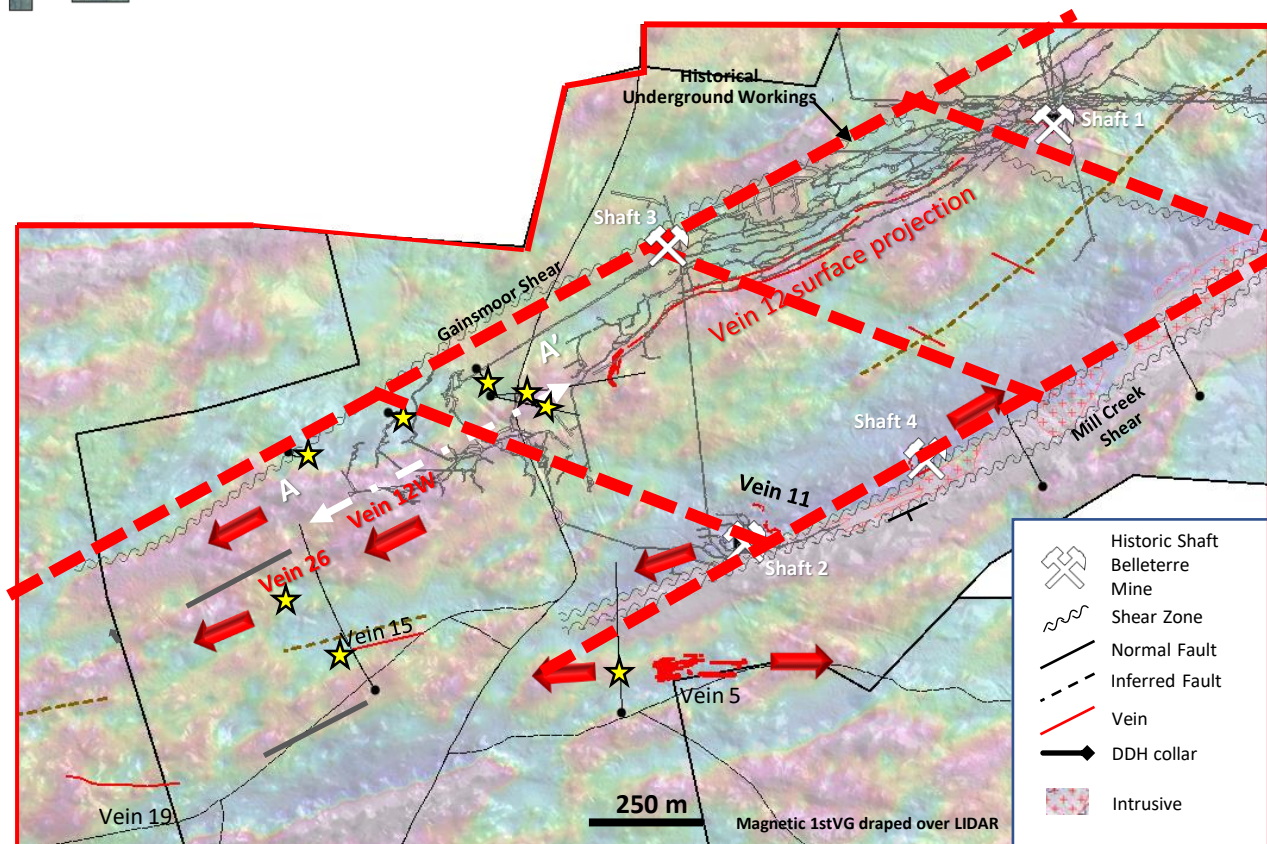
Deformation is highly pervasive with gold being well distributed over the entire intersection.



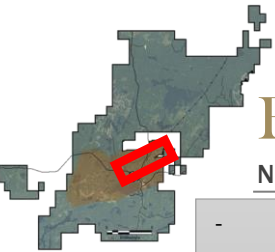


Belleterre Project – Historic Mine Trend

PHASE II DRILL PROGRAM (Results Pending – July 2022)



*A new structural interpretation is ongoing:
Based on the initial drill program observations to date and the new 3D modelling (see video)*

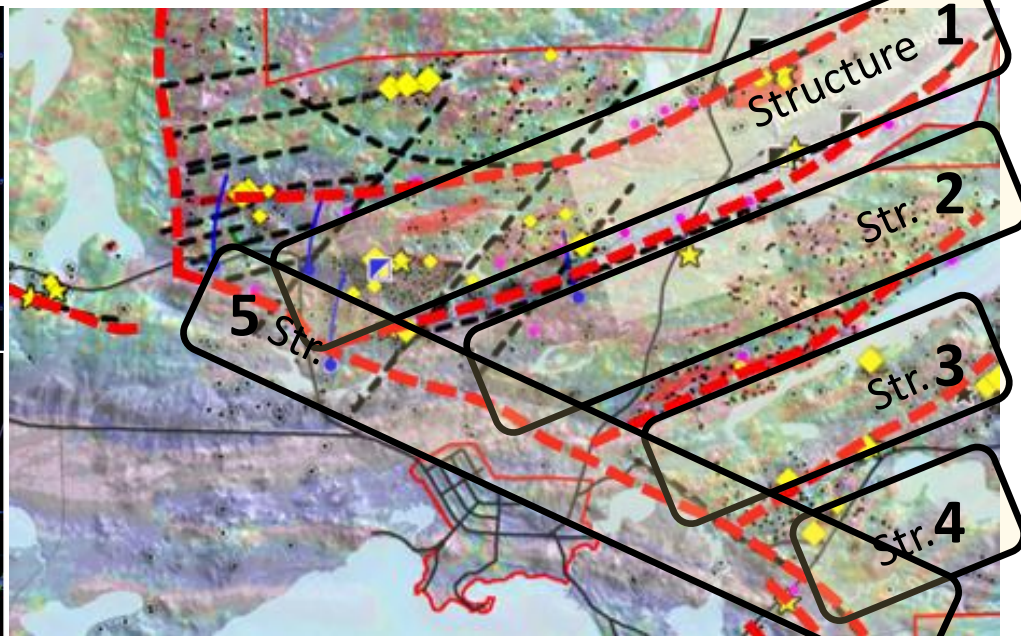
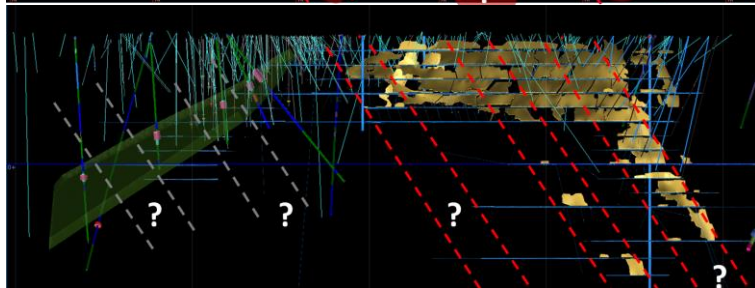
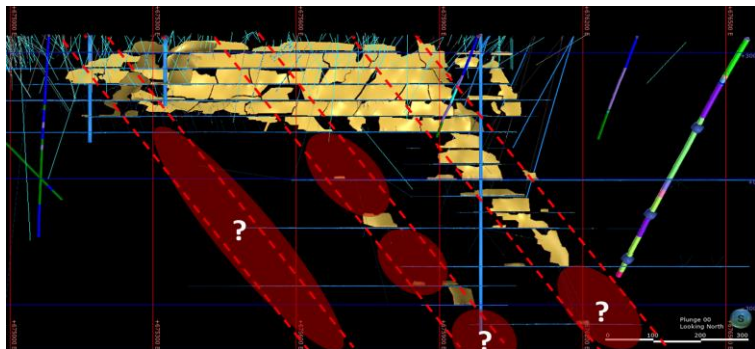


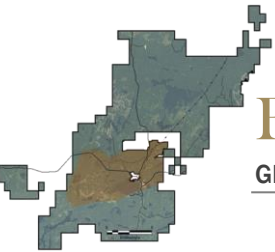
Belleterre Project – Drilling strategy



NEXT STEPS

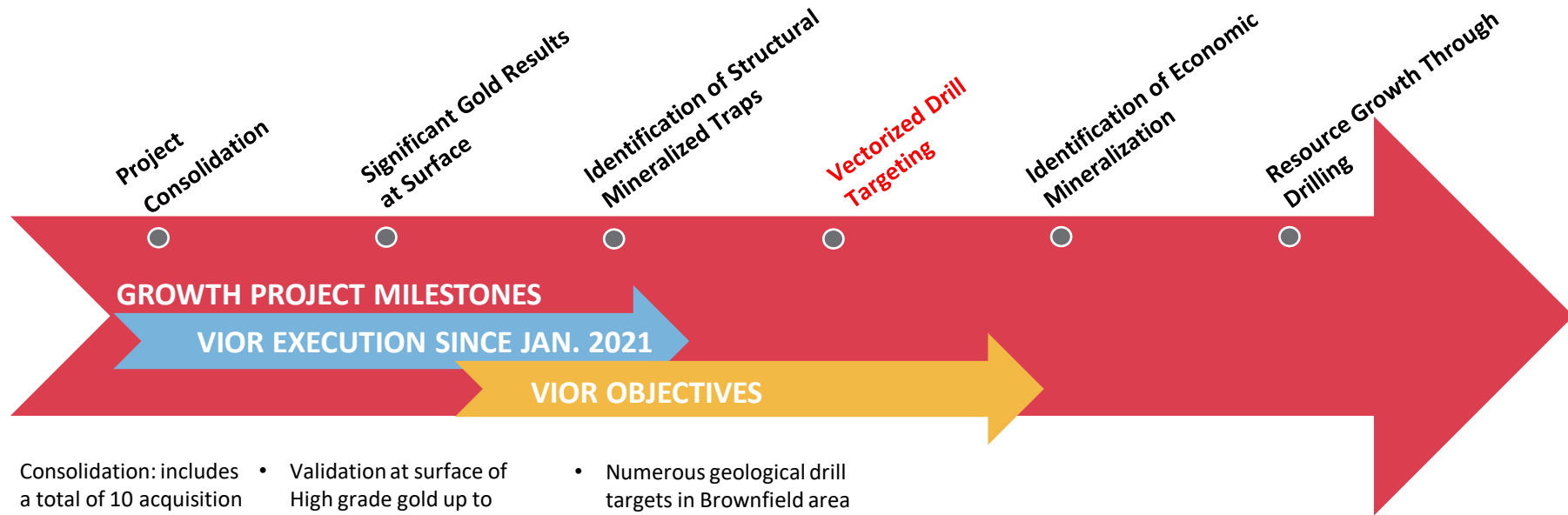
- Positive high-grade surface results on structures 1, 2, 3 & 4 see map below (Summer 2021 field program)
- 8 055m drilling initiated along the Historic Mine Trend (Structure 1 / Winter 2021-2022 drill program) confirms :
 - strong and wide structural deformation zones
 - gold continuity at depth over a large step out
 - identification of secondary structures that are controlling the high grade gold distribution
 - these important results will help refine the structural model for target generation on structures 1, 2, 3 & 4
- Exploration strategy - Summer to Winter 2022-2023:
 - 2+ months field program (Summer)
 - Database compilation & detailed structural modelling (Fall)
 - Design High priority drill program of 20,000 to 30,000 m on structures 1 to 5 (Fall/Winter)





Belleterre Project – Systematic Strategy

GROWTH OPPORTUNITY & POTENTIAL



- Consolidation: includes a total of 10 acquisition & option agreements
- Cohesive Land-Package consisting of 551 claims and covering 300 Km²
- Validation at surface of High grade gold up to 274.5 g/t Au
- Numerous underexplored lithgeochemistry anomalies
- OSK Blondeau-Guillet project (covering approx. half of Belleterre's historic Brownfield) to be explored by Vior in 2022
- Regional Till survey (results still pending) in greenfield area
- Numerous geological drill targets in Brownfield area identified
- Phase 1 (3,858m) drill program completed
- Phase 2 (4,197m) drill program completed / results pending
- Phase 3 Details to be determined - Q3-Q4 2022

Exploration Focus 2022 – early 2023

Belleterre



Area A: Historic Mine Trend

- Surface sampling & detailed geology
- Structural modelling phase 2
- Drill targeting for early 2023

Area B: Volcano-sedimentary sequence

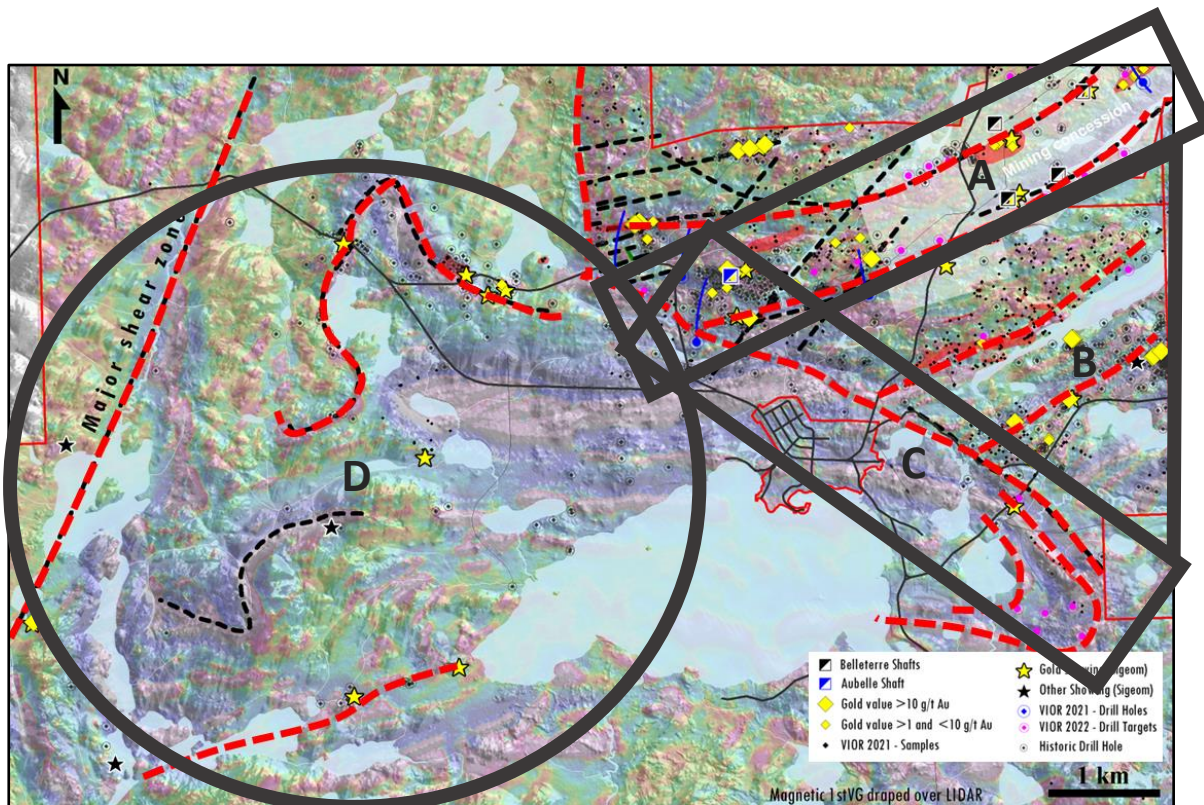
- Detailed geology
- Structural modelling
- Drill targeting for early 2023

Area C: Structural contact between Intermediate/Ultramafic sequence

- Magnetic inversion
- Surface mapping and sampling
- Drill targeting for early 2023

Area D: South West domain (Osisko option)

- Surface sampling, geology recon, validation of historic showings
- Structural field data acquisition
- Preliminary drill targeting for early 2023



Travaux de recherche:

Research programs



Belleterre



ANNEXE

FORMULAIRE D'ATTESTATION DES CONTRIBUTIONS À TITRE DE PARTENAIRE DE MILIEU PRATIQUE

Programme de recherche en partenariat sur le développement durable du secteur minier-II
3^e concours

ATTENDU que, dans le cadre du programme de recherche en partenariat sur le développement durable du secteur minier-II, 3^e concours, le projet de recherche doit être réalisé conjointement avec au moins un partenaire de milieu pratique¹ et que l'ensemble des contributions au coût direct de la recherche doit représenter au moins 10 % du montant de la subvention demandée au FRQNT; chaque partenaire de milieu pratique doit remplir et signer le présent formulaire. Le chercheur principal ou la chercheuse principale doit par la suite joindre le présent formulaire signé, en format PDF, à la section « Autres documents » de son formulaire électronique FRQnet avant la date et heure limites du concours. S'il y a plus d'un partenaire, tous les formulaires d'attestation signés doivent être regroupés en un seul PDF.

TITRE DU PROJET : Les utilisations multiples du mercure naturel archéen : sources, guides et impacts.

CHERCHEUR OU CHERCHEUSE RESPONSABLE DU PROJET : Stéphane de Souza

ENTENTE DE COLLABORATION DE RECHERCHE

UQAM – AEM – O3 - VIO



Skyfall

Québec Mines + Énergie
22-25 novembre 2021

Un nouveau regard sur la ceinture de roches vertes d'Urban-Barry: contexte géologique et métallogénie d'un district aurifère émergent

Jean-Luc Pilote (CGC-Q), Patrick Mercier-Langevin (CGC-Q), Sébastien Castonguay (CGC-Q), Brandon Choquette (Osisko Mining), Natasha Wodicka (CGC-O), Benoit Dubé (CGC-Q), Édouard Côté-Lavoie (Osisko Mining), Boris Artinian (Bonterra Resources), Marc Ducharme (Bonterra Resources), Ka Ming Yuen (Bonterra Resources)



Natural Resources
Canada

Ressources naturelles
Canada

Canada

TGI : Targeted Geoscience Initiative
Commission Géologique et INRS

<https://www.nrcan.gc.ca/earth-sciences/earth-sciences-resources/targeted-geoscience-initiative-tgi/10907>

The Vior Investment Opportunity

1. SOLID FOUNDATION

- ✓ Low-cost Corporate Structure - Large Insider share ownership !!
- ✓ Exposure to 9 promising Precious Metals Projects – All in Safe Jurisdictions
- ✓ Significant new Discovery Potential

2. SOLID PROVEN STRATEGY

- ✓ Belleterre Project potential & Corporate Execution
- ✓ Osisko Mining Inc's Endorsement



3. CONTINUOUS NEWS FLOW

- ✓ Belleterre - Rapidly developing High-Grade Gold project
 - Recent high grade rock samples up to **274.9 g/t Au**
 - 3,858 m** drilling Phase I - Completed
 - 4,197 m** drilling Phase II - Completed
- ✓ Skyfall - Greenfield gold & nickel Potential located next to world class gold deposits
- ✓ Mosseau / Ligneris - Intermediate gold projects with excellent Potential
- ✓ Ridgeline Investment – Excellent exploration potential from 4 Gold & Silver Projects in Nevada and 1 Gold Project in Idaho

Belleterre Project - Gold

2021-2022 FIELD ACTIVITIES & INSTALLATIONS





TSXV – VIO
OTC – VIOF
FRANKFURT – VL51



CONTACT

Mark Fedosiewich
mfedosiewich@vior.ca
+1 613 898 5052

vior.ca

Vior Corporate Profile



WHO WE ARE

BOARD OF DIRECTORS

Independent



CLAUDE ST-JACQUES - Chairman (Québec, Qc.)
Founder of Vior, Mazarin and Virginia Gold Mines
Former General Director of the Prospector Association of Quebec
Extensive business network in the mining and resource sector



MARK FEDOSIEWICH - President and CEO (Ottawa, Ont.)
Former First Vice President of CIBC Wood Gundy Inc.
Over 30 years experience in the investment and junior mining sector
Extensive business network in the mining and resource sector

Independent



ÉRIC DESAULNIERS - Director (Gatineau, Qc.)
Founder and CEO of Nouveau Monde Graphite Inc.
Professional geologist specialized in geophysics
Former Infantry Officer in the Canadian Forces

Independent



CHARLES-OLIVIER TARTE - Director (Prévost, Qc.)
CFO of Nouveau Monde Graphite Inc.
Chartered Professional & Certified Management Accountant
Former controller for Imerys Graphite & Carbon Qc



LAURENT EUSTACHE - Director (Montreal, Qc.)
Executive Vice-President Vior Inc.
Professional geologist specialized in economic geology
Former Portfolio Manager SIDEX

MANAGEMENT

MARK FEDOSIEWICH – President & CEO

LAURENT EUSTACHE – Executive VP

INGRID MARTIN – CFO

TECHNICAL TEAM

CHRISTIAN BLANCHET - Operations Manager

MATHIEU GUAY - Geology Manager

CHAD PETERS – Technical Advisor

MARC L'HEUREUX - Technical Advisor

KEN WILLIAMSON – Structural Geologist Consultant