



**Gold, Silver and Base Metal Properties  
Presentation  
March 2021  
(TSX-V: PJX)**

# Disclaimer

Some of the information in this presentation has been extracted from the prospectus and NI 43-101 Technical Report filed on SEDAR ([www.sedar.com](http://www.sedar.com)). Investors should base their investment decision on information contained in the prospectus and NI 43-101 Technical Report only.

This presentation may contain certain forward looking information relating to expected future events and financial and operating results of the Company that involve risks and uncertainties. Readers are cautioned not to place undue reliance on forward-looking statements as there can be no assurance that the plans, intentions or expectations upon which they are based will occur.

Due to the potential impact of various factors, including the volatility of metal prices, new information regarding recoverable reserves or resources, market competition, changes in environmental and other regulations, political changes, and other factors, the Company disclaims any intention or obligation to update or revise any forward-looking information, where as a result of new information, future events or otherwise, unless required by applicable law.

Geological information has been reviewed by John Keating, P.Geo. (a qualified person for the purpose of National Instrument 43-101 Standards of Disclosure for Mineral Projects). Mr. Keating is the President, CEO and a Director of PJX.

**THIS IS NOT AN OFFER OR SOLICITATION FOR THE PLACEMENT OF SECURITIES.**

# PJX Highlights

---

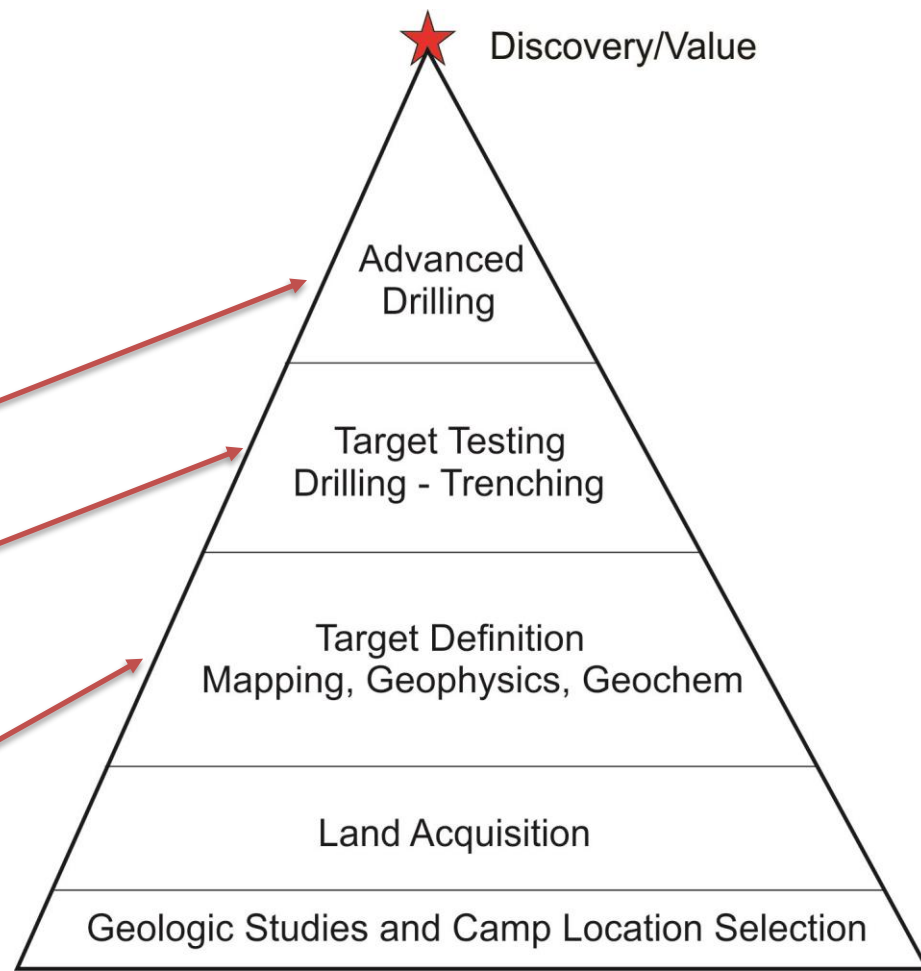
- District Scale Exploration Target: 10 to 100 million ounces gold / 500 to 1000 million ounces silver.
- Regional prolific mineral district (Belt-Purcells) analogous to world class Abitibi gold and base metal district.
- Two intersecting regional structures associated with Vulcan Gold Belt and Sullivan Mining Camp.
- Target type: Orogenic and Magmatic Gold Trend – Fort Knox (>5mm ozs), Telfer (>30 mm ozs), Sukhoi Log (>30mm ozs).
- Vulcan Gold Belt - estimated 1.5 million ounces of placer gold produced since 1864 gold rush.
- Significantly underexplored - No gold source identified to date - Only 150 holes drilled for gold on entire trend.
- First time 100% owned mineral rights consolidated covering 520 km<sup>2</sup> over 60 km strike.
- Pipeline of Gold and Base Metal (silver, lead, zinc) targets – 20 large targets identified to date.
- Drill Ready Projects: Gold Shear Property – High-grade gold, Vine Property – Sullivan silver, lead, zinc deposit style target.
- Extensive project infrastructure, road accessible.
- Local community support.
- February 2021, Osisko Gold Royalties became the first development company to recognize the significant potential of the Vulcan Gold Belt with the acquisition of an equity interest in PJX and a 0.5% net smelter return(“NSR”) royalty on PJX’s 4 gold properties (Gold Shear, Eddy, Zinger and Dewdney Trail).

# PJX Resources History

- PJX recognized and developed concepts for new mining camps with world class deposit potential.
- Has consolidated significant 100% owned land position in the Vulcan Gold Belt.
- Development of solid pipeline of gold projects.
- +1000 gold showings identified.
- Over 15 target areas defined.

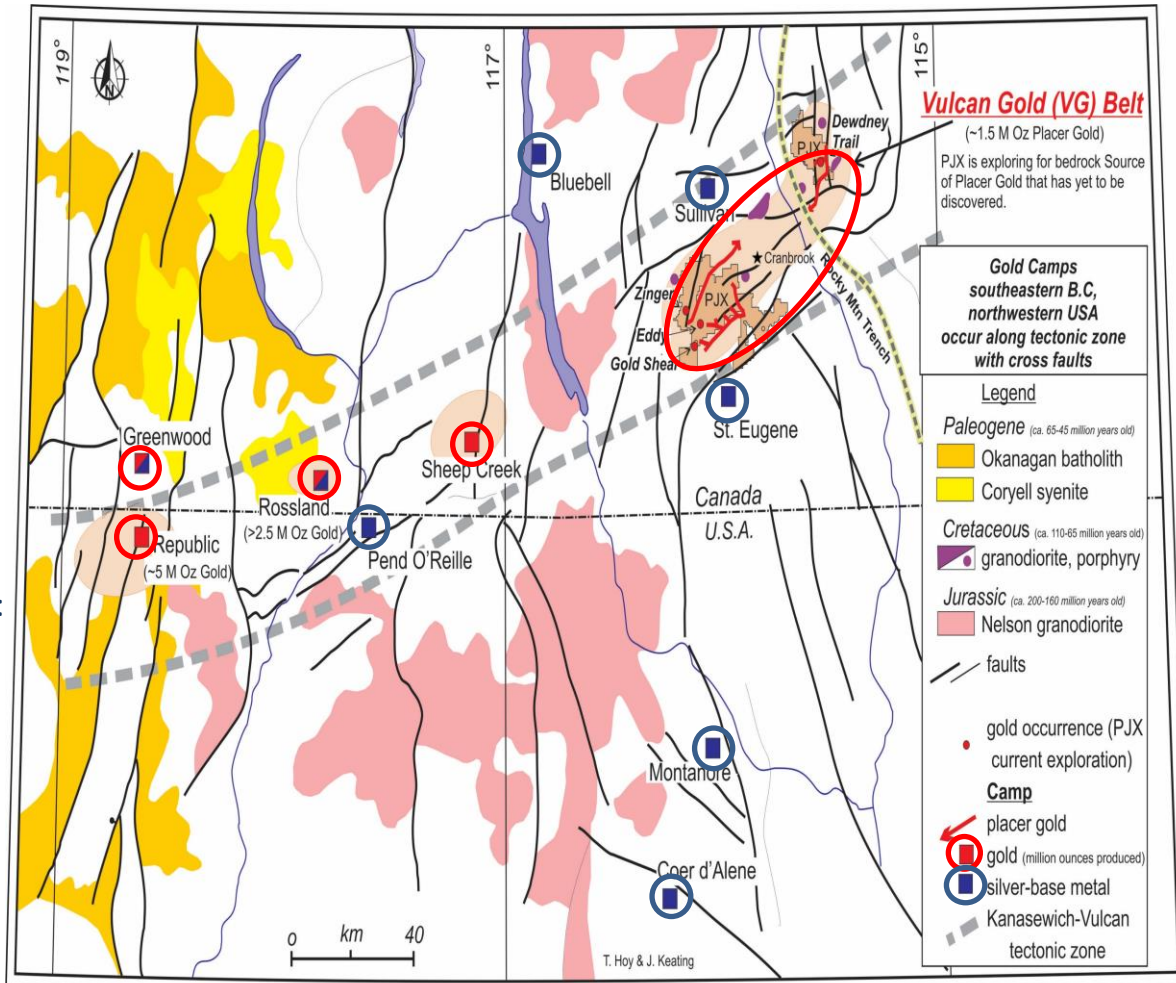
## We Are Here:

- Gold Shear Property – Priority Gold Target. ]
- Vine Property (silver-lead-zinc-gold targets) ]
- Eddy Property (gold targets) ]
- Zinger Property (gold targets) ]
- DD Property (silver-lead-zinc targets) ]
- Dewdney Trail Property (gold, silver-lead-zinc targets) ]



# Vulcan Gold Belt - Regional Geology and Deposits

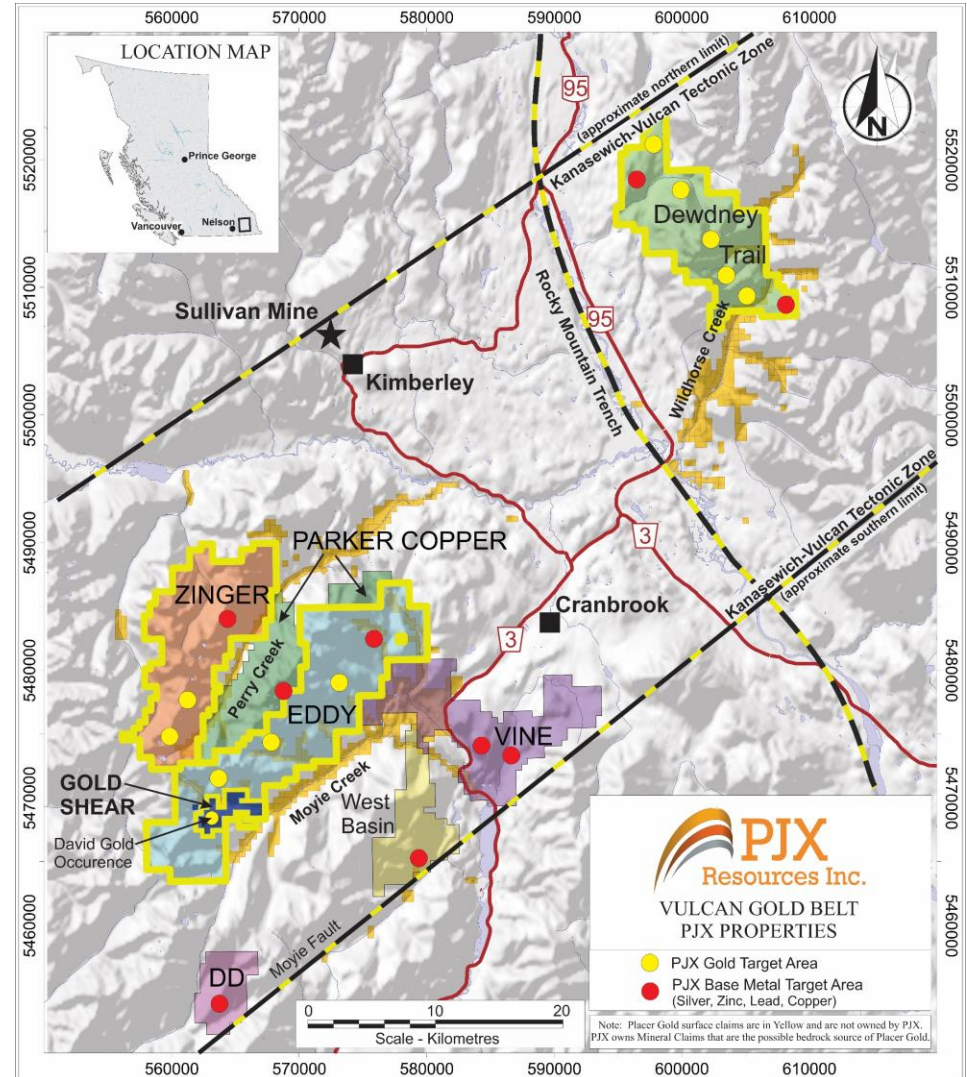
- Vulcan Tectonic Zone spans from Washington State to Cranbrook.
- Major intersecting north-south, east-west structures.
- Prolific mineralizing systems hosting world class gold camps and deposits including:
  - Republic
  - Greenwood
  - Rossland
  - Sheep Creek
  - Cranbrook Placer Gold Camps,
 and Silver-Lead-Zinc or Silver-Copper deposits:
  - Sullivan
  - Pend O'Reille
  - St Eugene
  - Montanore
  - Coeur d'Alene.



# PJX Gold Properties - Vulcan Gold Belt Overview

- Four 100% owned gold properties
  - Gold Shear\*
  - Eddy
  - Zinger
  - Dewdney Trail.

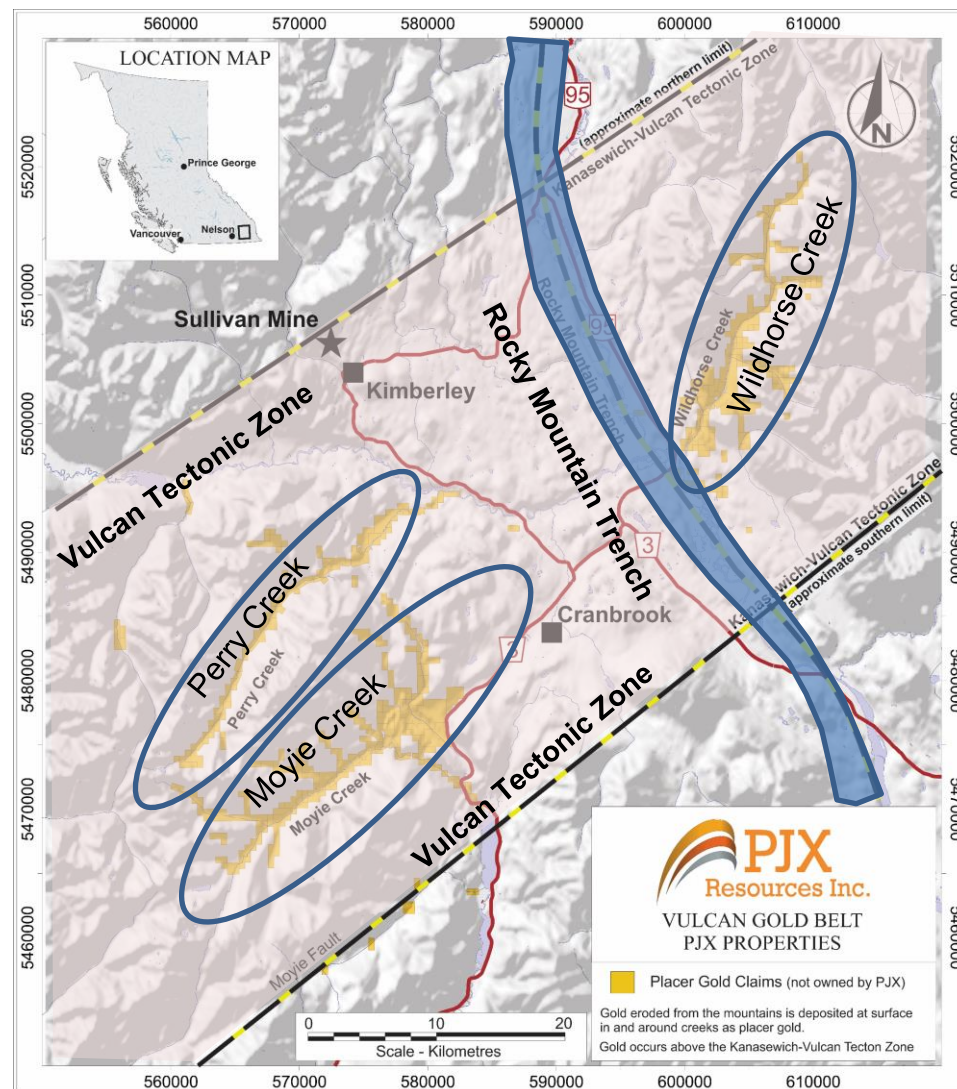
(\*Gold Shear has underlying 2%NSR, with \$2 million buyback)
- Claims cover +520 km<sup>2</sup> over aggregate 50 km strike of prolific gold mineralization.
- 3 gold properties each cover an area similar in size to Timmins and other gold mining camps.
- Infrastructure excellent:
  - Roads
  - Water
  - Power
  - Rail
  - Services.
- Politically safe jurisdiction; Southeast British Columbia, Canada.
- Supportive First Nations and local communities.





# Vulcan Gold Belt – Structural Geology

- Rocky Mountain Trench (“RMT”) and Vulcan Tectonic Zone (“VTZ”), large structures associated with Gold deposits and camps in Canada and United States.
- Structures penetrate deep to earth’s mantle, provide pathways for intrusives and gold bearing fluids.
- Only place in North America where RMT and VTZ intersect is Cranbrook, where over 60 km of placer gold occurs in creeks.
- Three separate creek drainages with placer gold are coincident with the structures.
- Estimated 1.5 mm ozs of placer gold mined since the 1864 gold rush.
- Exploration focus was historically for base metal Sullivan style targets in this area.
- No bedrock source for the placer gold currently discovered.
- Multiple deposit discovery potential.



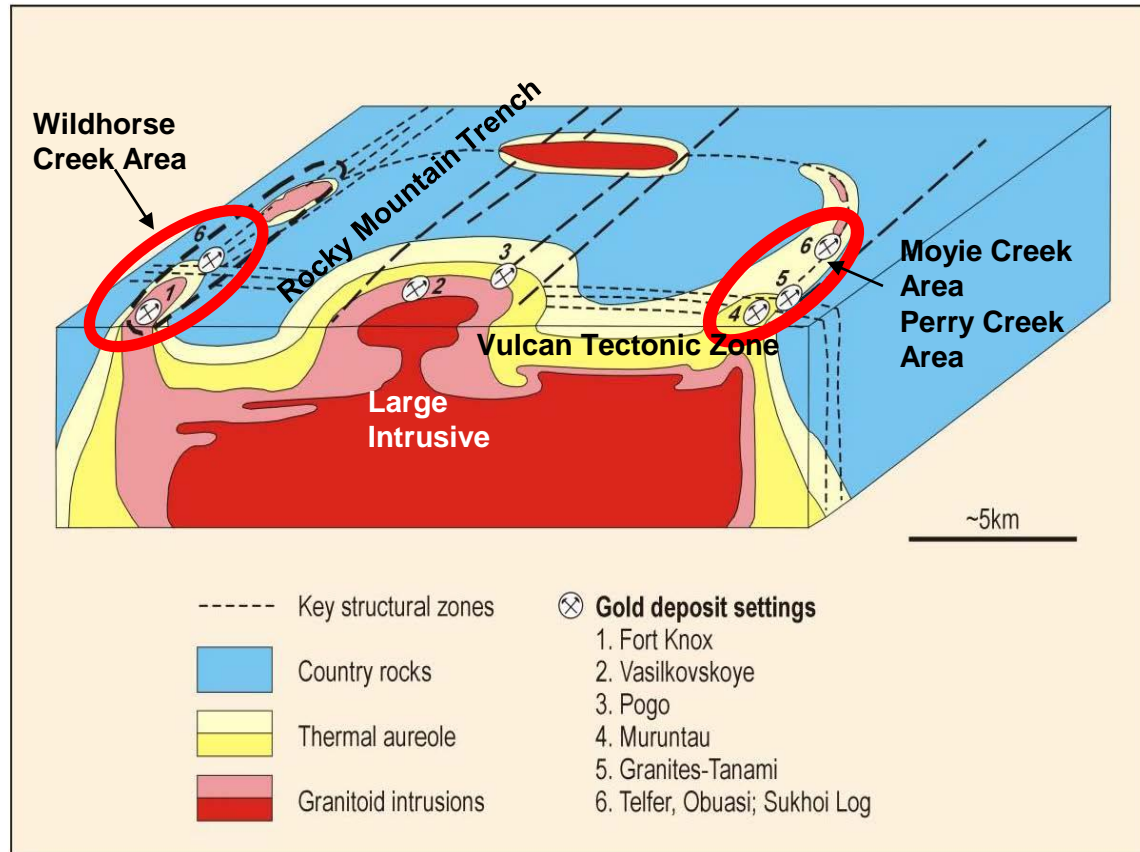
- Geophysics highlights Granitic-Alkalic Intrusives (red anomalies) Cretaceous age (110-65 million years old).
- Large Intrusives coincident with intersecting RMT and VTZ.
- Numerous associated intrusives, fault and fold structures radiating away from main Intrusives.
- Placer gold creeks mimic radiating structures/intrusives.
- Potential Deposit types:
  - Thermal Aureole Gold (TAG),
  - Mesothermal Shear Related Orogenic Gold,
  - Sediment Hosted Gold, and others.





# PJX Vulcan Gold Belt - Geological Interpretation

- Vulcan Gold Belt geological interpretation based on Thermal Aureole Gold Model with Orogenic Type gold potential.
- Major deep penetrating intersecting structural systems.
- Coincident associated intrusive complexes.
- Multiple mineralizing systems with potential to host world class gold deposits such as:
  - Fort Knox (>5mm oz, Alaska)
  - Vasilkovskoye (13 mm oz, Kazakhstan)
  - Pogo (>5mm oz, Alaska)
  - Muruntau (>100mm oz, Uzbekistan)
  - Granites-Tanami (>13mm oz, Australia)
  - Telfer (>31mm oz, Australia)
  - Obuasi (>49mm oz, Ghana)
  - Sukhoi Log (>30mm oz, Russia).

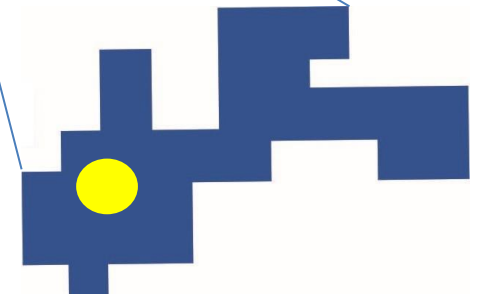
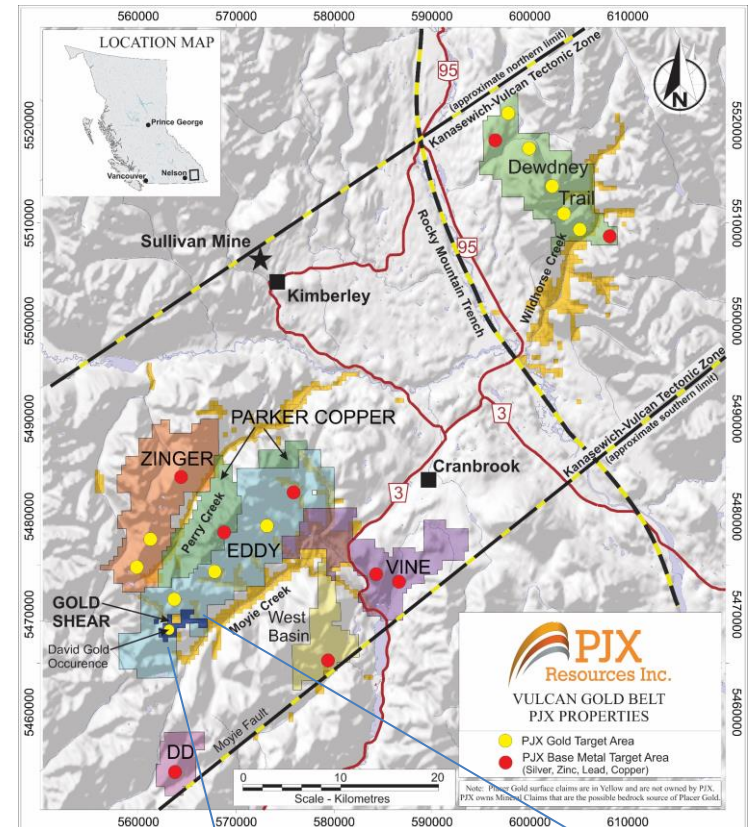


3D-Model of Thermal Aureole Gold (TAG) Deposits with Vulcan Gold Belt features

Source: Vic Wall and associates - (Vic Wall and Jeff Taylor were winners of the 2000 Gold Corp Challenge)

# Vulcan Gold Belt - Gold Shear Property Priority Project

- **Gold Shear Property** is located 29 km south of Cranbrook, British Columbia.
- PJX has mineral rights for over 20 km on strike on adjacent Eddy Property.
- Gold Shear Property hosts high-grade **David Gold Zone**.
- 1990's shallow drilling defined zone to 150m strike, 100 metres depth and 2.35 metres widths.
- Historical resource estimate of 96,000 tonnes grading 13.08 g/t gold (uncut) or 7.11 g/t gold (cut).\*
- PJX surface trenching: 7 of 12 rock grab samples grade 68 g/t to 193.90 g/t gold.
- 6 of 9 PJX drill holes intersect values ranging from 3.88 g/t over 2.65 metres to 25.07 g/t over 2.10 metres to 100 metres depth.
- PJX Drilling intersects orogenic style high-grade gold mineralization similar to shallow drilling results at Wallbridge's Fenelon Property Tabasco Gold Zone in Quebec.
- Follow up geophysics identifies additional potential mineralizing structures on strike and at depth.



\* Property Development Report by Bapty Research Ltd., 1991, quoted from the B.C Ministry of Energy Mines, and Petroleum Resources' Minfile Record Summary (082FSE108). Not prepared using resource categorizations set out in NI 43-101. PJX management is not aware of any more recent resource estimate and is uncertain as to the relevance or reliability of the historical estimate. PJX is not treating the historical estimate as current mineral resources or reserves, as a qualified person has not done sufficient work to classify the historical estimate.



# Gold Shear Property David Gold Zone Core

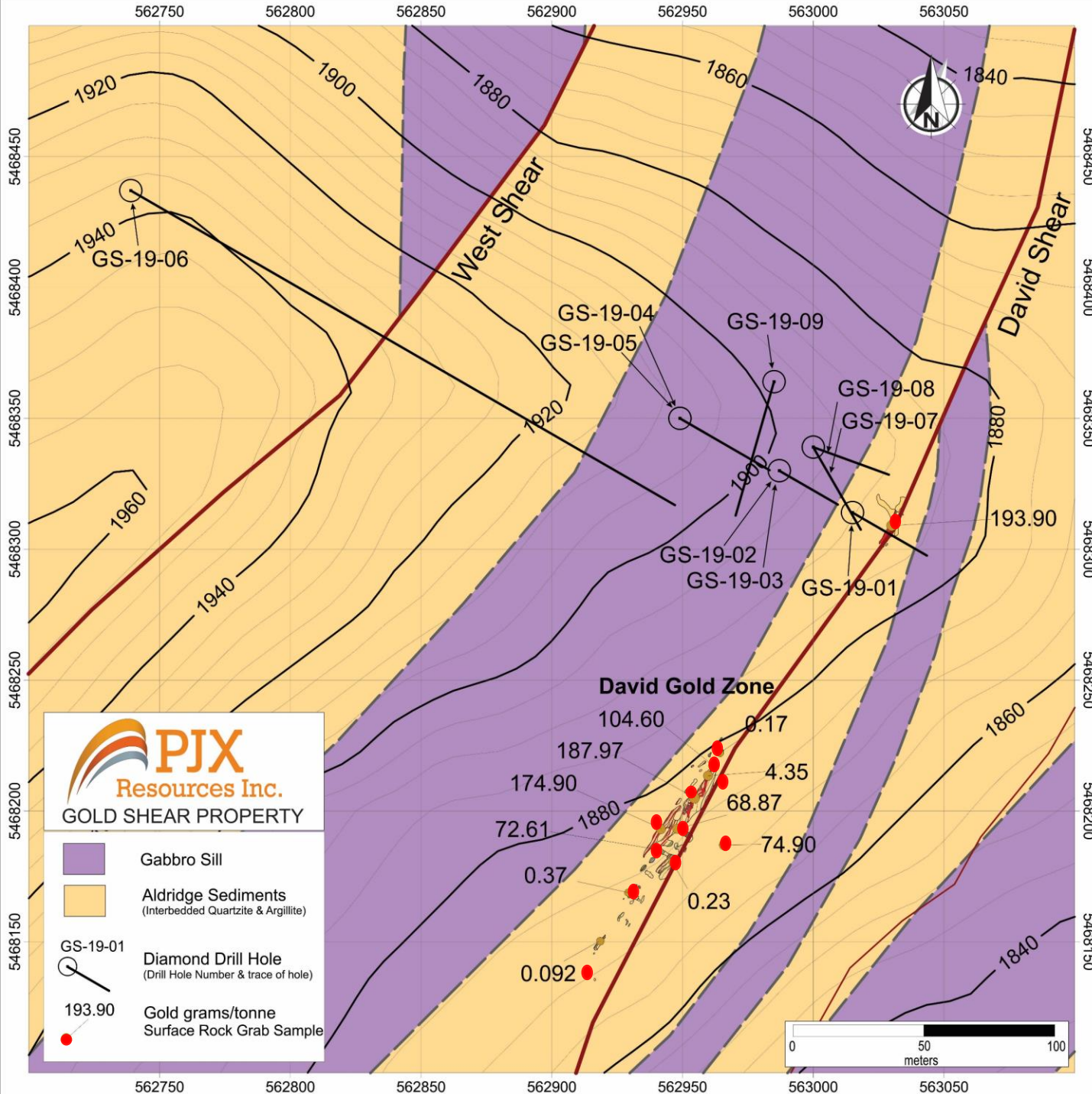
(Historical Drill Holes 90-21 & 91-43, not analyzed by PJX Resources))

High-Grade Gold Mineralization - 196.69 g/T (5.74 oz/t) gold) over 0.8 metres

Highest gold grades occur with sulphide mineralization  
Some sulphide sections are weakly conductive







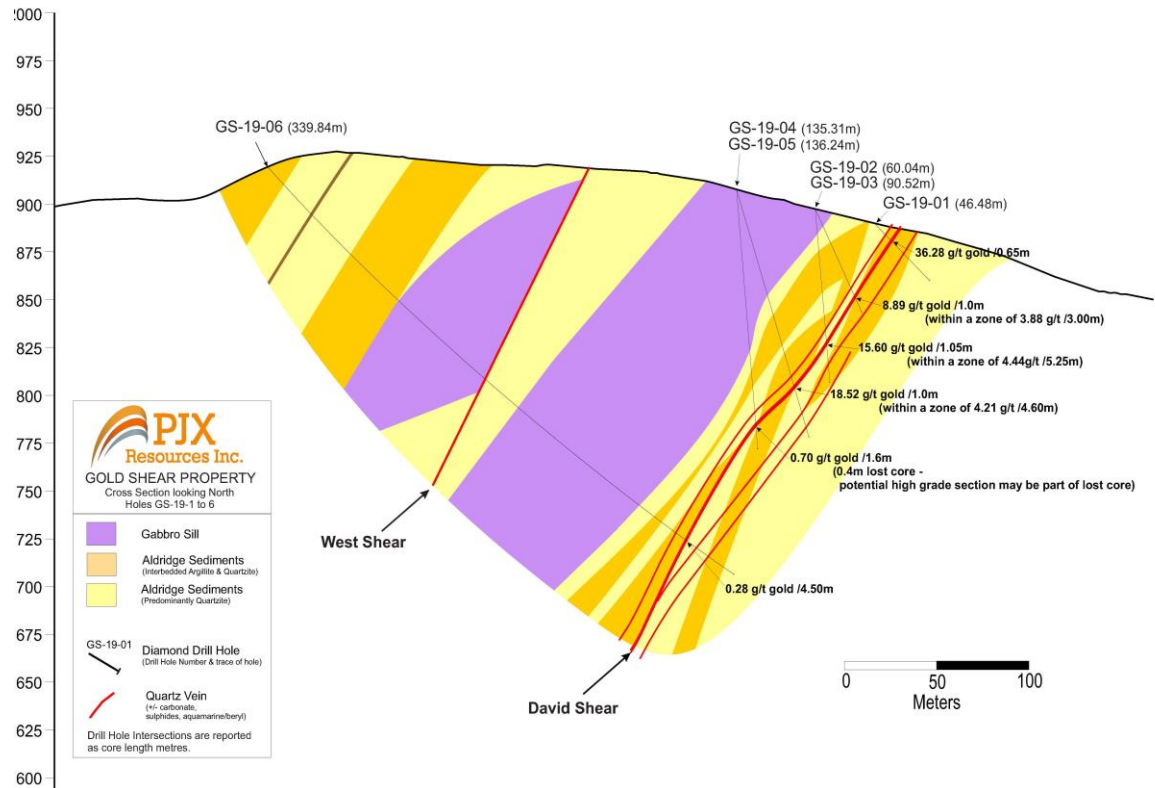
## David Gold Zone Geology Map with PJX Drill Holes

- Surface trenches - 7 of 12 rock grab samples grade 68 g/t to 193.90 g/t gold.
- Gold occurs as visible gold or with sulphides (pyrite, galena, chalcopyrite) or tellurides.
- Gold occurs with quartz-carbonate &/or sericite alteration.
- Gold correlates well with tellurium and mercury.
- Beryl and K-spar in veins, possible granitic intrusive source at depth.
- 9 holes drilled in 2019 test north end of David Gold Zone.
- Mesothermal orogenic style gold mineralization.



# David Gold Zone and West Shear Cross Section (looking north)

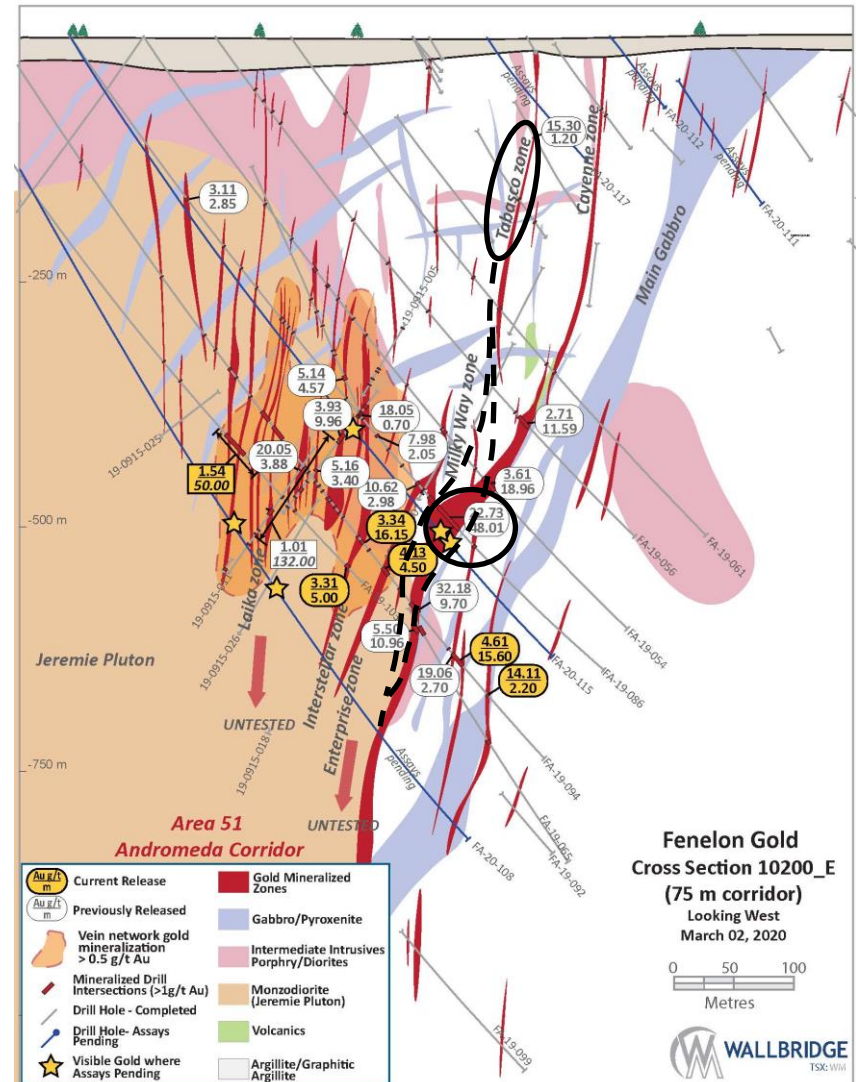
- High grade David Gold Zone occurs in the west dipping David Shear.
- 8 of 9 holes intersect gold mineralization in David Gold Zone.
- 6 holes with values ranging from 3.88 g/t over 2.65 metres to 25.07 g/t over 2.10 metres to 100 m.
- Anomalous gold values intersected to at least 175 m.
- High-grade core defined in the David Zone.
- Host gold grades, up to 54.76 g/t in a core zone that varies from of 0.60 to 2.0m true width.
- West Shear has anomalous gold.



# Fenelon Gold Project in Quebec - A Comparison with David Gold Zone

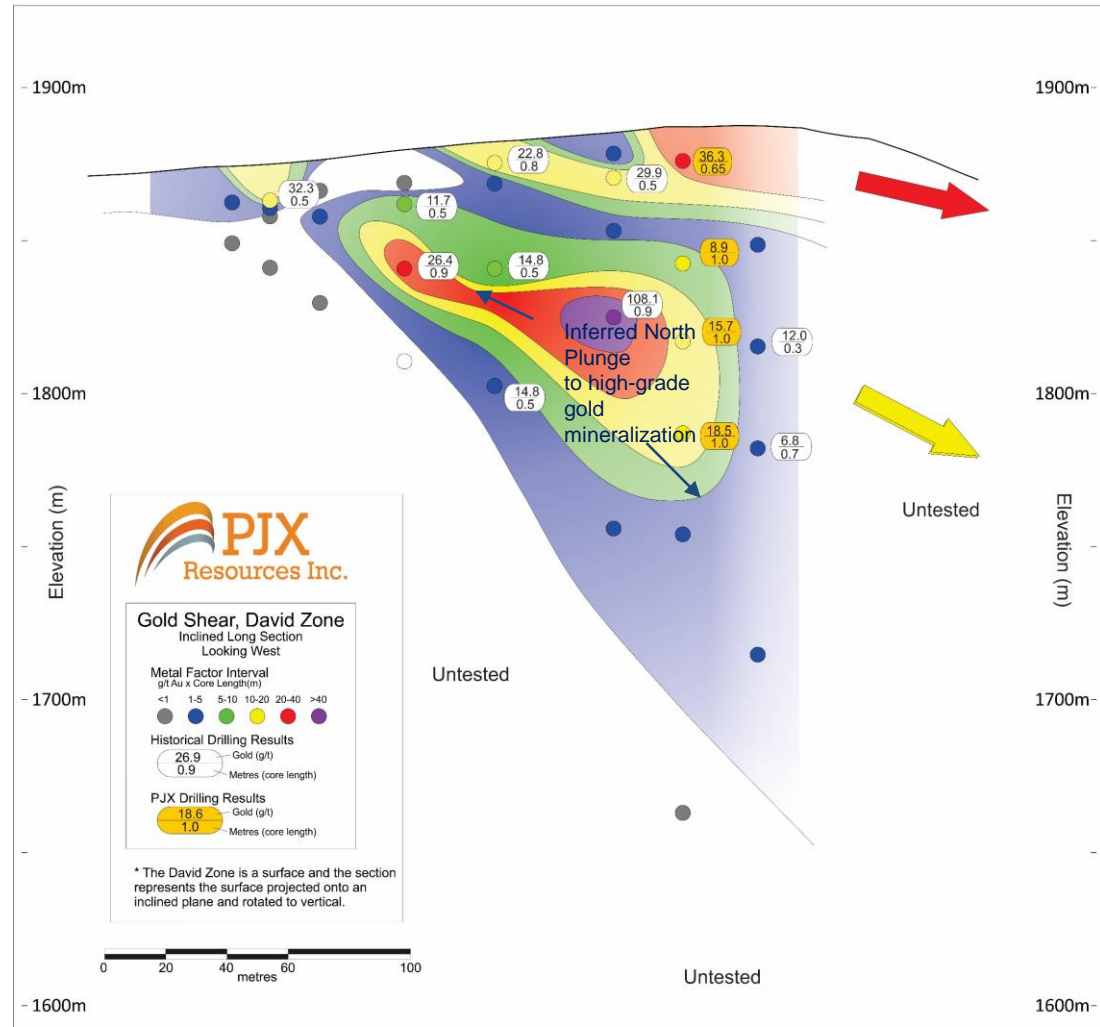
## (Cross Section)

- High-grade gold zone at Wallbridge Mining's Fenelon Gold Project increases in width at depth as structures dilate open (bends or folds).
- The Tabasco Zone (circled) is 15.3 g/t over 1.20m at a vertical depth of approximately 100 m.
- Tabasco Zone expands at approximately 400 m and deeper where the zone dilates open. Drilling intersected 22.73g/t over 48.01 m (circled).
- David Gold Zone has similar near surface gold grades to Fenelon mineralized structures
- David Gold Zone only tested to approximately 125 m depth.
- The zone's host rocks (sediments, gabbro) are similar to Fenelon's, just a different age.
- David Gold Zone needs to be drilled at depth and along strike to identify structural dilations with potential to host high grade gold mineralization.



# David Gold Zone – Mineralization Long Section (looking west)

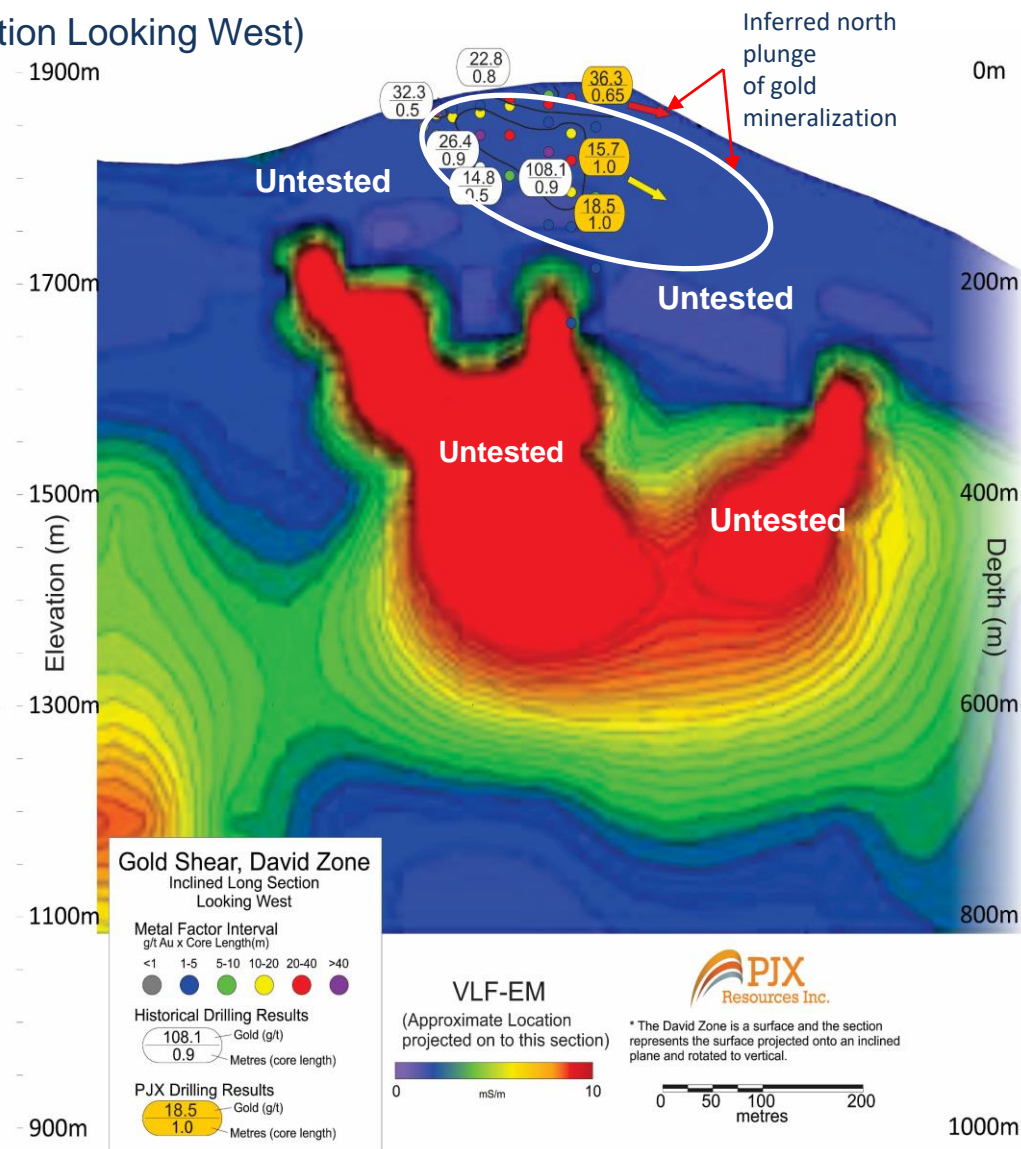
- Longitudinal section shows pierce points where PJX's and historical (1990's) drill holes intersect the David Gold Zone.
- High-grade gold mineralization appears to plunge or trend to the north.
- Zone is untested at down plunge and at depth.



# David Gold Zone - Geophysics Untested Target

(Long Section Looking West)

- Large untested area is defined by conductive geophysical target (Red Area).
- Geophysical target – possible cause includes:
  - increase in sulphide content
  - intersecting structures
  - structural dilation zones hosting mineralization
  - change in rock type.
- Possible extension of the David Gold Zone at depth.
- Potential additional parallel gold zones at depth.
- South (left) side of target has similar dip to inferred north dip (plunge) of high-grade gold mineralization in the David zone near surface.

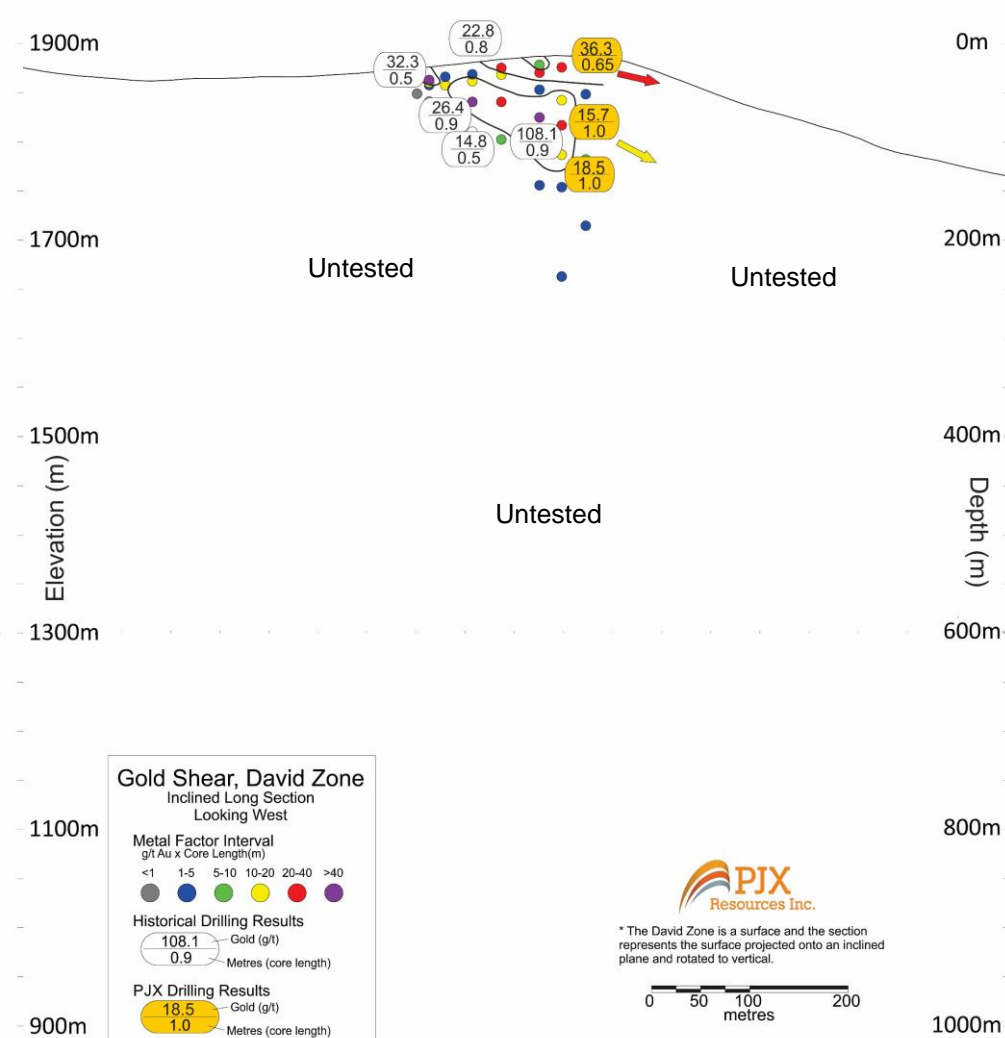
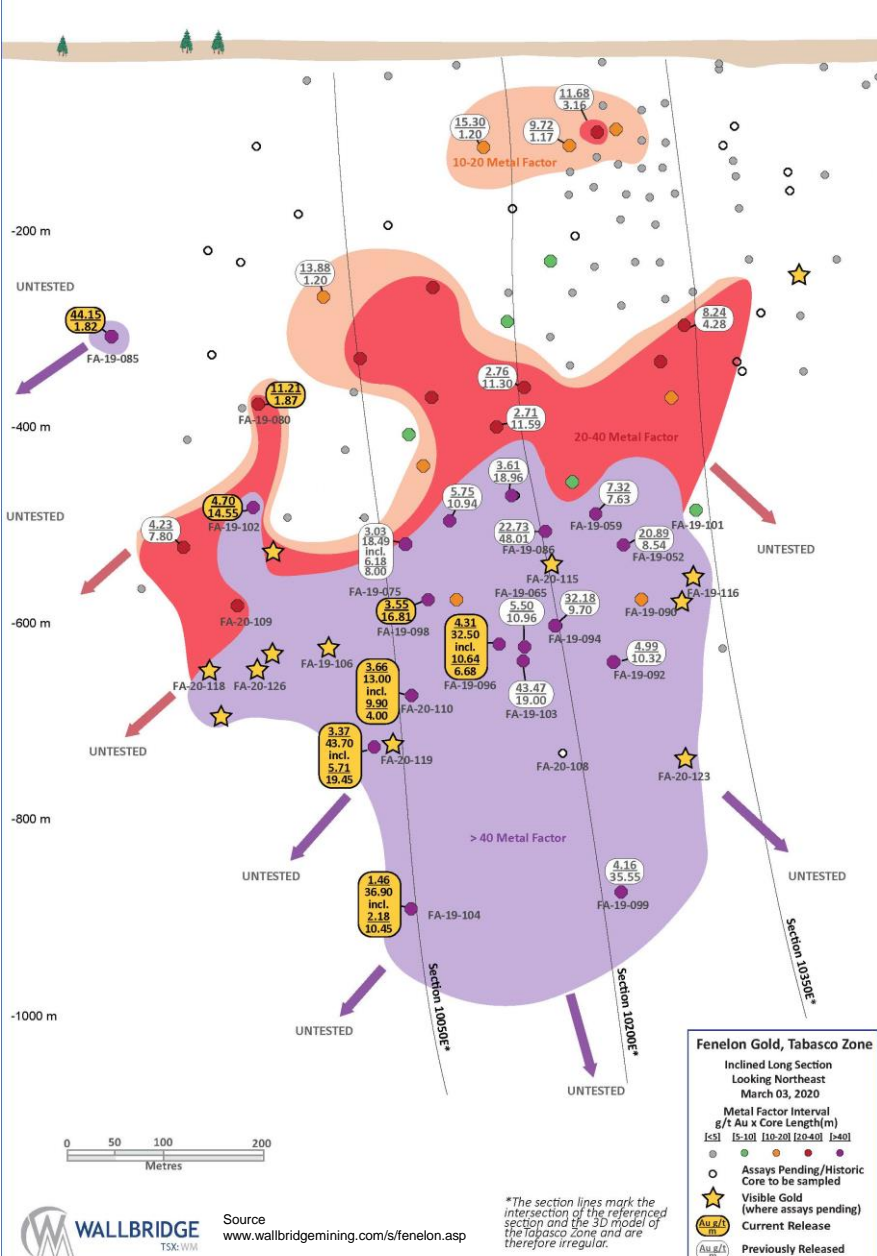




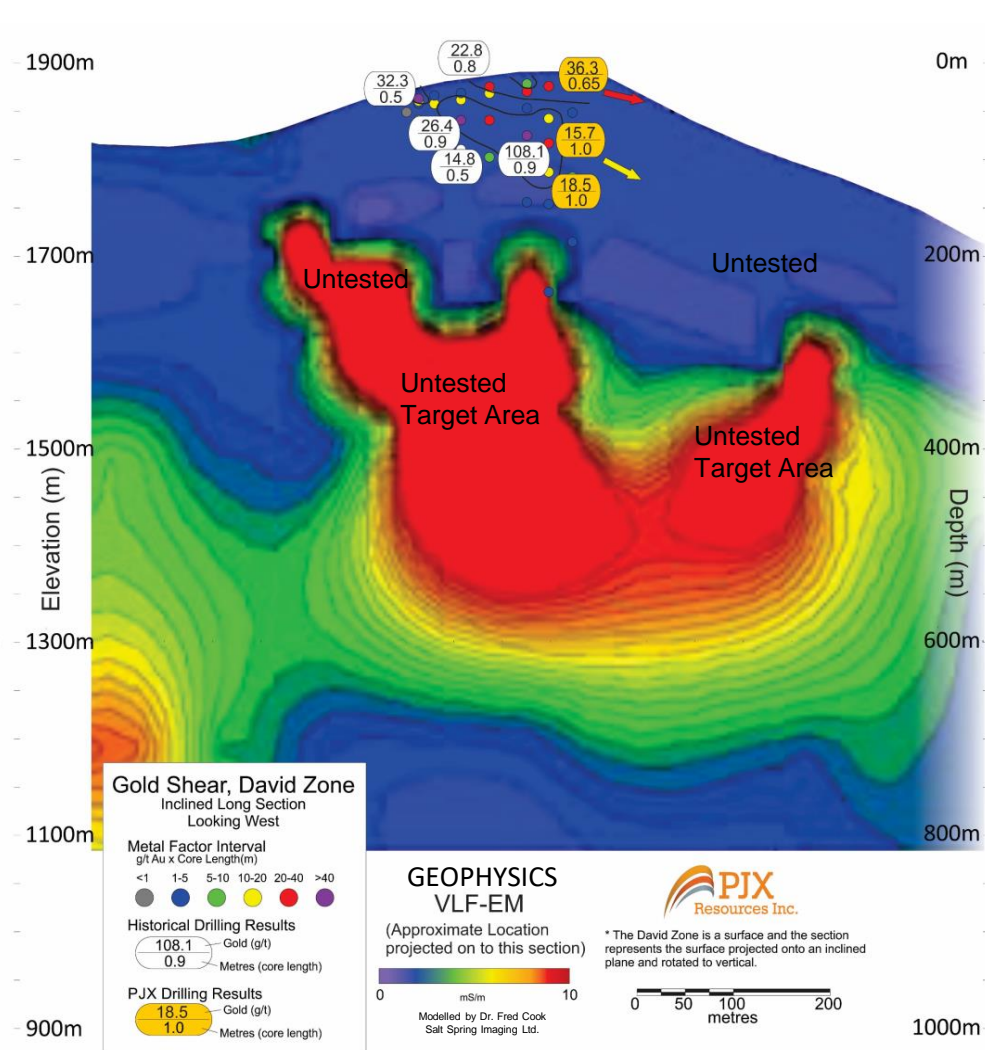
# Wallbridge Mining's Long Section Tabasco Gold Zone

# Tabasco Gold Zone in Quebec comparison with David Gold Zone (Long sections are at same scale)

# PJX Resources' Long Section David Gold Zone



**PJX Resources'  
Long Section  
David Gold Zone**



Weakly conductive VLF geophysical target (Red Area) at depth may reflect a possible increase in sulphide content or dilation (bend or fold) in the shear that could cause an expansion of the David Gold Zone or a possible separate parallel gold zone at depth.



# Power Lines adjacent to Gold Shear Property





# Vulcan Gold Belt – Gold Shear Property Next Steps

---

David Gold Zone  
&  
PJX Team



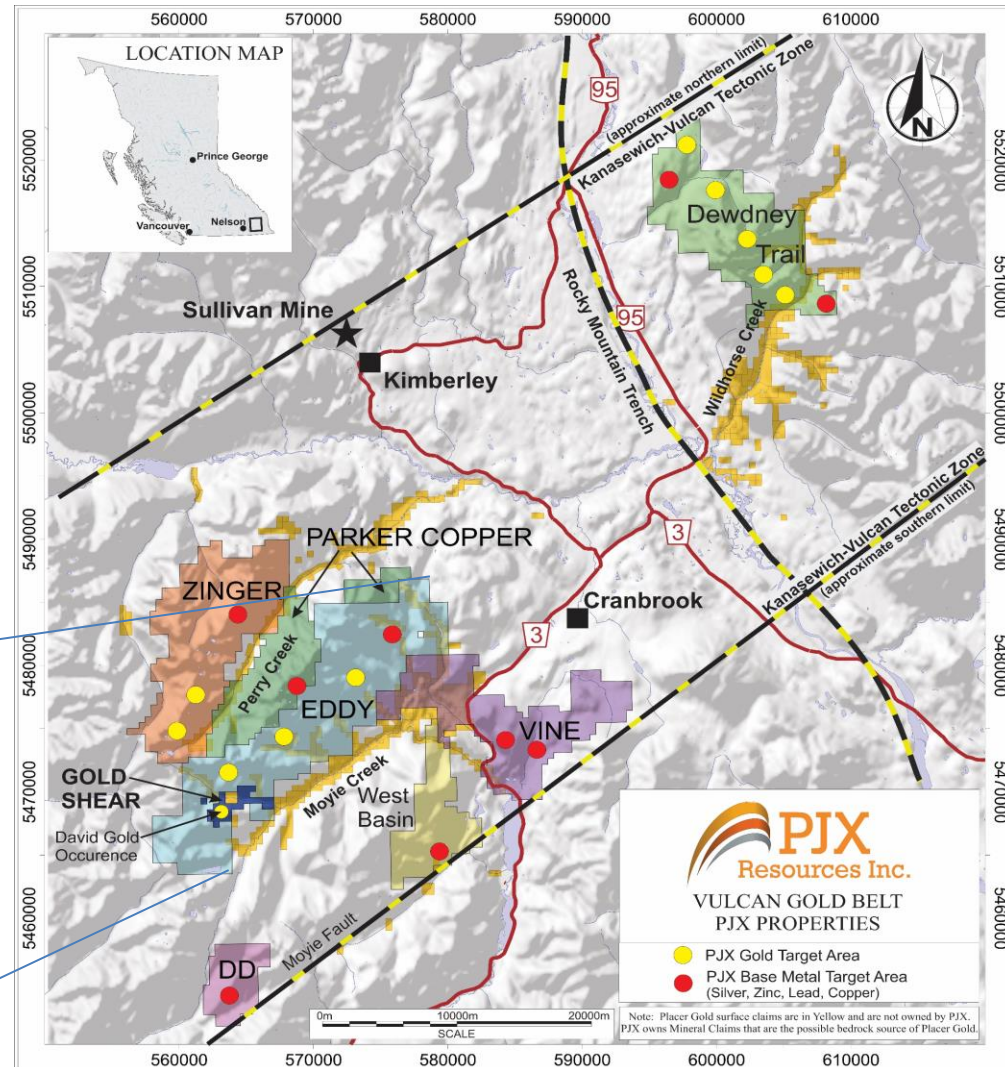
- Seven holes tested the David Gold Zone at depth and on strike in late 2020.
- Gold assay results from the drilling are pending.
- Results will be used to plan the next phase of drilling on the David Gold Zone in 2021.
- Results of this work will also be used to plan exploration and drilling to test similar targets to the David Gold Zone on PJX's adjacent Eddy Property and gold targets on the Zinger and Dewdney Trail Properties.



# Vulcan Gold Belt – Eddy Property

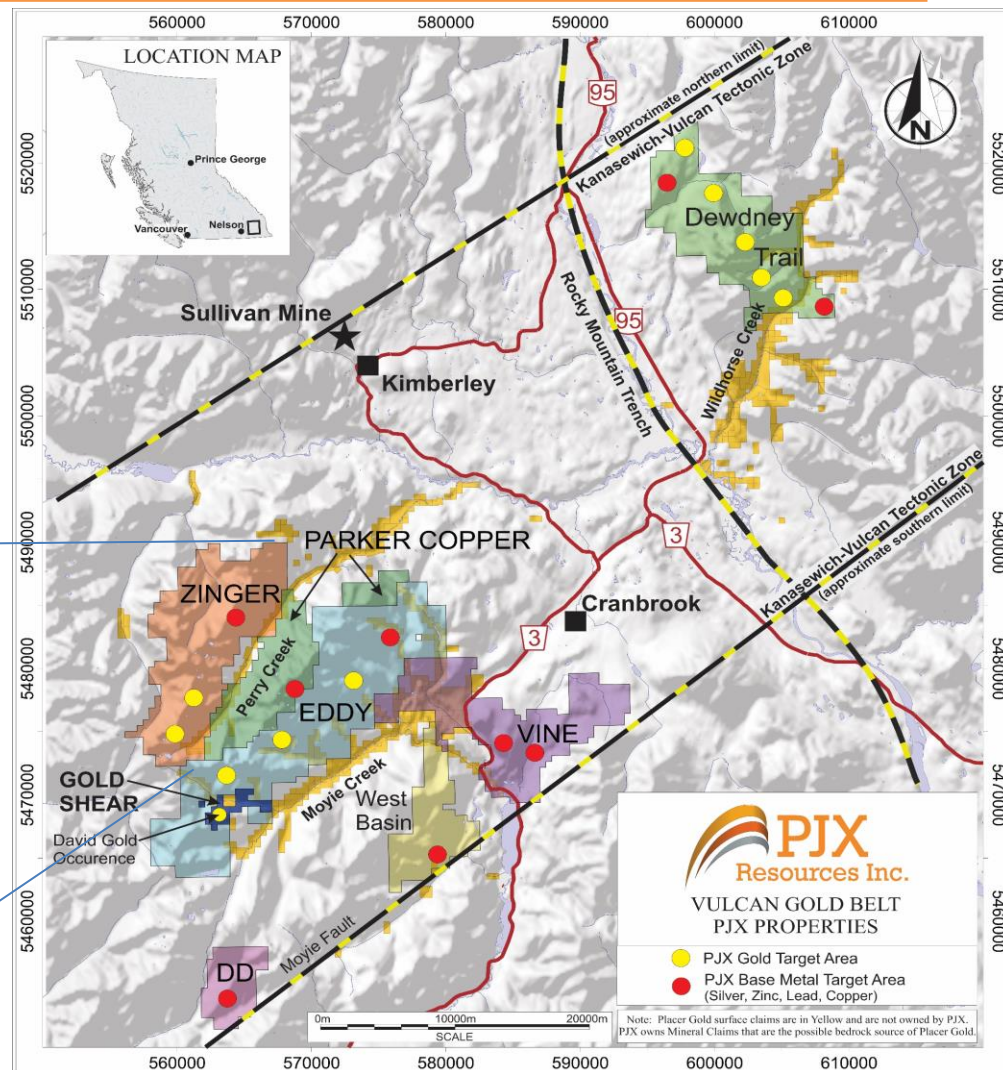
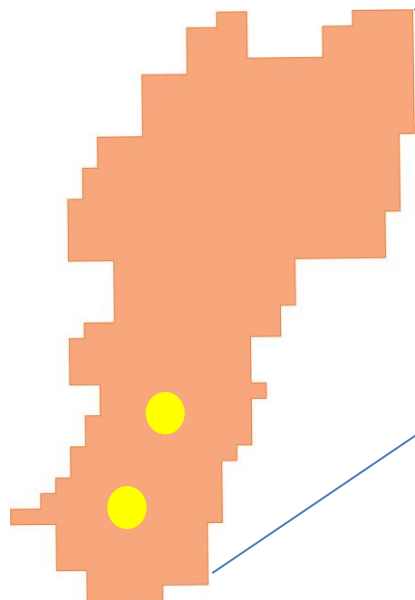
- Located 15 km west of Cranbrook, British Columbia.
- Property covers over 15,000 hectares and 20km of possible placer gold sources mined in Moyie Creek.
- Orogenic type gold target areas not yet drilled on strike with the David Gold Zone.
- Rock grab or chip samples from outcrop in one target area returned values up to;
  - 108g/t gold from the Hill Vein,
  - 34g/t gold from the MC Shear Zone,
  - 79g/t gold from the Red Zone.
- David Gold Zone drilling results will be used to help plan the next phase of exploration and drilling for the Eddy Property.

Red Zone  
Hill Vein  
MC Shear

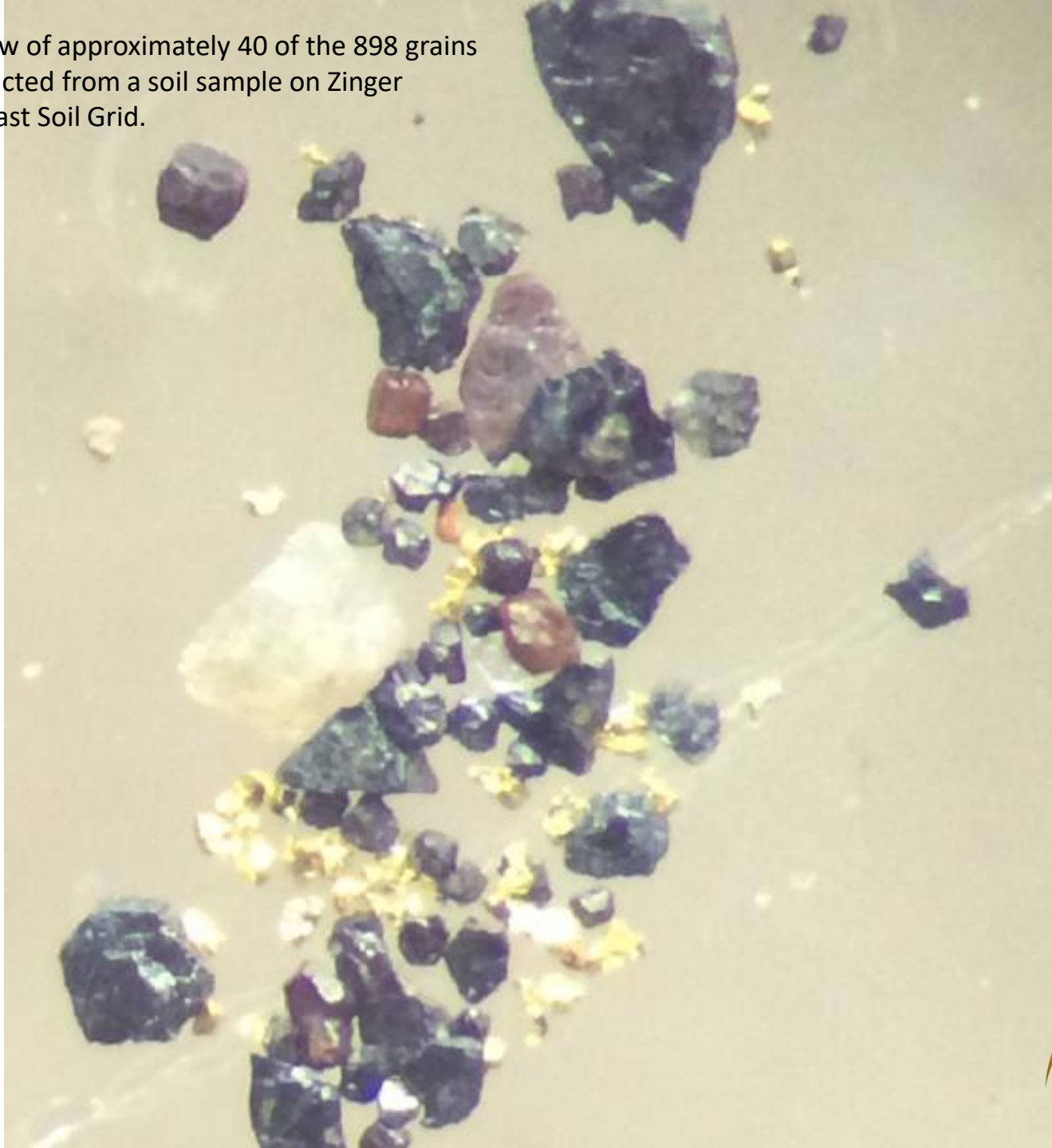


# Vulcan Gold Belt – Zinger Property

- Located 24 km west of Cranbrook, British Columbia.
- Property covers over 10,000 hectares of possible placer gold sources mined in Perry Creek.
- Proximal to deep penetrating structures associated with the Vulcan Tectonic Zone, and felsic intrusives.
- Initial drilling confirms gold mineralizing system.
- Potential for Orogenic and Intrusive Related type gold deposits.



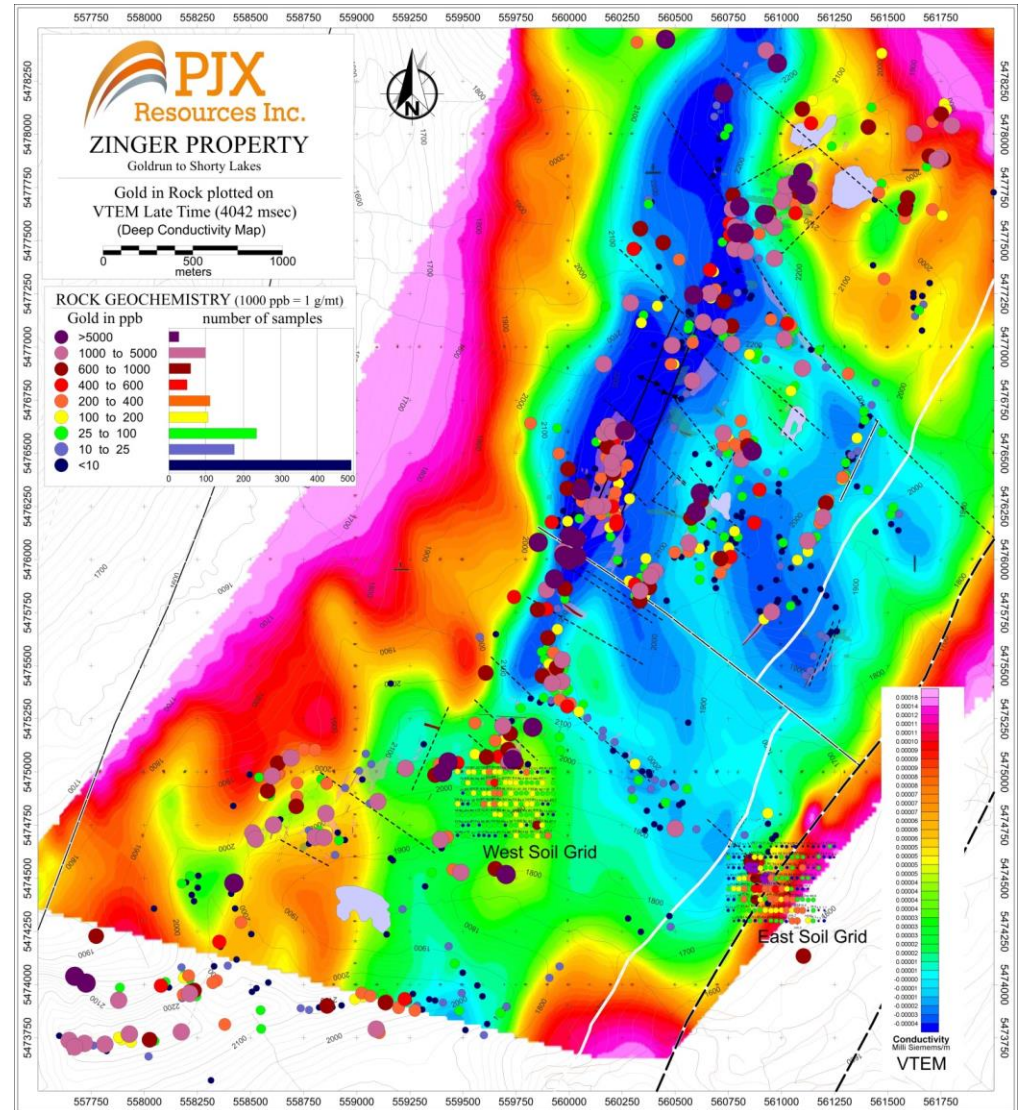
Enlarged view of approximately 40 of the 898 grains of gold extracted from a soil sample on Zinger Property's East Soil Grid.





# Vulcan Gold Belt – Zinger Property - Target Areas

- Anomalous gold in soil (up to 4,941 ppb), and in 750 of 1380 rock grab samples (up to 39.6 g/t gold) outlined over 6 km mapped structural trend.
- Values in 225 rock samples range from 0.5 g/t to greater than 5.0 g/t along this trend.
- Coincident Airborne geophysics outlined:
  - Resistive target approximately 4 kilometres by 2 kilometres in area
  - Resistive target depth estimated at between 400 m and 700 m.
- Drilling to test a gold showing at surface intersected 2.92 g/t gold over 2 m within a broader interval of 0.50 g/t gold over 22.38 m from surface to 25 m.
- Results appear to confirm structural interpretations of mineralized zones at depth.





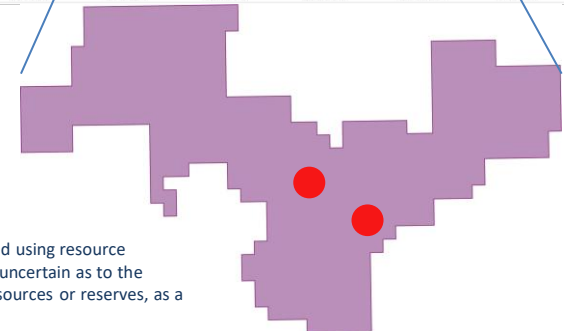
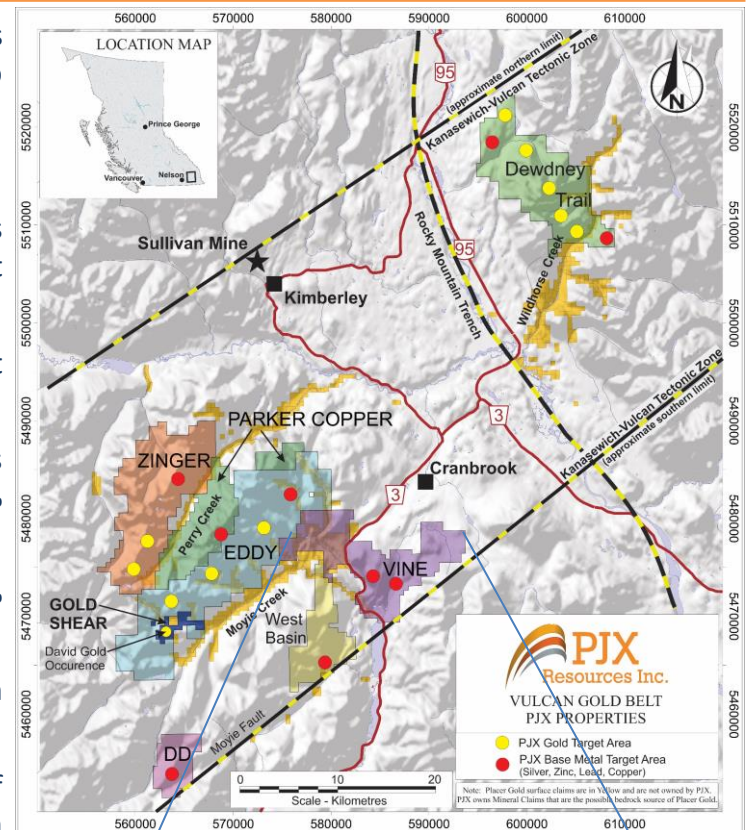
# Vulcan Gold Belt – Zinger Property – Summary & Next Steps

---

- Multi-year drilling and exploration permit in place from BC government.
- 6km gold in bedrock trend and large coincident target area at depth, defined by airborne geophysics, are considered to be related to 2 fold structures (vertical fold and more horizontal fold).
- Preliminary drilling intersected geology and anomalous gold mineralization that support the potential for multiple gold discoveries near surface and at depth where 2 fold structures are projected to intersect.
- Next step is to identify rock types with the best chemistry or physical attributes to host a gold deposit by trapping and/or extracting gold from fluids flowing along the large structures.
- Drilling will target locations where favourable rock types are projected to occur within the large fold structures.
- David Gold Zone drilling and exploration results will also be used to help define these targets for future drilling.

# Sullivan Style Silver-Lead-Zinc Targets – Vine Property

- 2001- Sullivan Mine closed after 90 years production – 285 million ounces silver, 9 million tonnes lead and 8 million tonnes zinc in concentrate sent to Trail Smelter for treatment; was foundation and life of Cominco.
- **Vine Property** located 35 km south of Sullivan Mine.
- 1976 – Cominco discovers vertical dipping Vine Vein, believe it is remobilized from Sullivan type massive sulphide at depth. Drills to test Sullivan Horizon.
- 1990s Kokanee Exploration Ltd. drill program intersects massive sulphide at 760m depth.
- Historical resource estimate calculated on Vine Vein - 1,300,000 tonnes grading 2.2 g/t gold, 36.3 g/t silver, 3.12% lead, 3.12% zinc and 0.11% copper.\*
- 2017 - PJX grab sample from Vine Vein trench assayed 15.78% zinc, 17.45% lead, 0.44% copper, 185 g/t silver, 4.42 g/t gold.
- 2018 - PJX property-wide MT geophysics program identifies large 4 km conductive target area suggesting potential sulfide mineralization at depth.
- 2019 - PJX drilling on geophysical target provides Initial confirmation of mineralization, intersecting 3.5m of massive sulphide at 780m depth with anomalous zinc, lead, copper and silver.
- PJX drilling and geophysics supports new massive sulphide (NMS) horizon 300m below Cominco's deepest hole, and coincident with massive sulphide in a 1991 Kokanee drill hole 700m away.



\*Source MDAP – Kokanee Exploration Ltd. Prospectus (1990) - resource estimate for the Vine Vein. Not prepared using resource categorizations set out in NI 43-101. PJX management is not aware of any more recent resource estimate and is uncertain as to the relevance or reliability of the historical estimate. PJX is not treating the historical estimate as current mineral resources or reserves, as a qualified person has not done sufficient work to classify the historical estimate.



# Vine Property (Zinc-Lead-Silver-Gold in veins first discovered by Cominco in 1976)

Vine Core Facility and Core Racks (February, 2015)

Vine Vein





# Massive Sulphide in Vine Vein

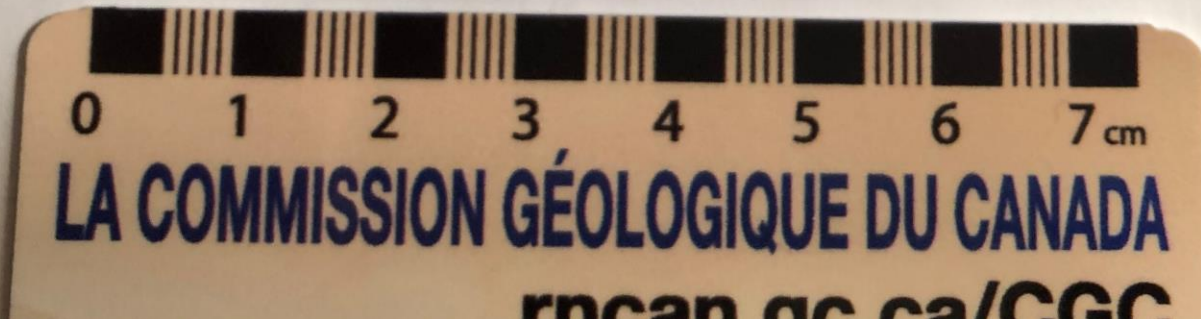
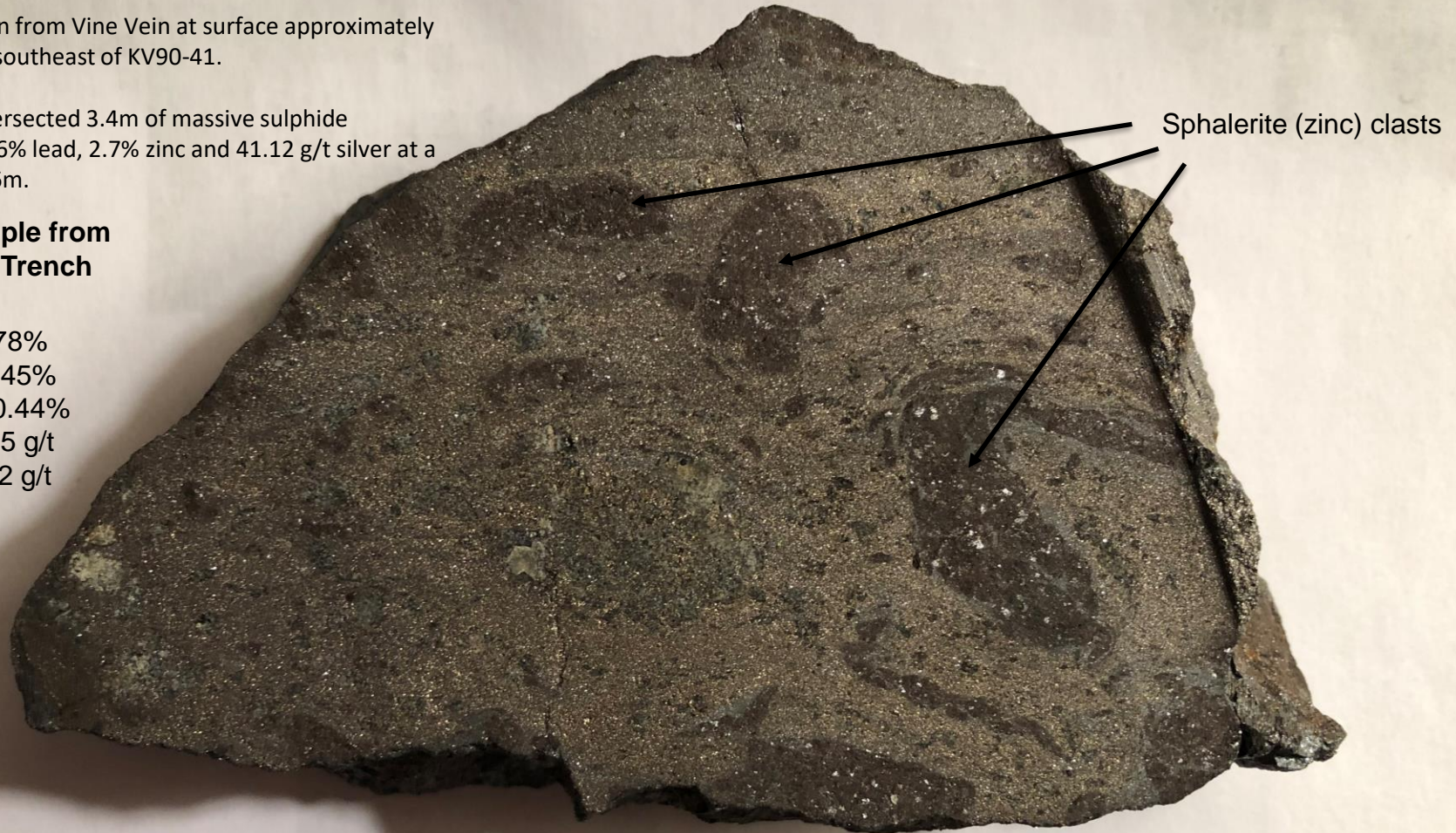
Possible Remobilized Sphalerite (zinc) clasts in massive sulphide

Sample taken from Vine Vein at surface approximately 500 metres southeast of KV90-41.

KV90-41 intersected 3.4m of massive sulphide averaging 5.6% lead, 2.7% zinc and 41.12 g/t silver at a depth of 756m.

## Grab Sample from Vine Vein Trench Analysis

Zinc – 15.78%  
Lead – 17.45%  
Copper – 0.44%  
Silver – 185 g/t  
Gold – 4.42 g/t





## Massive Sulphide in New Massive Sulphide (NMS) Horizon intersected in hole VA19-48

NMS Horizon is from 777.1-782.6m depth.

NMS Horizon has 4 separate layers of massive sulphide that appear to be bedding conformable and total 3.5m true width.

The massive sulphide has Durchbewegt Texture that is similar in style to mineralization found within 1000m of the Sullivan Deposit.

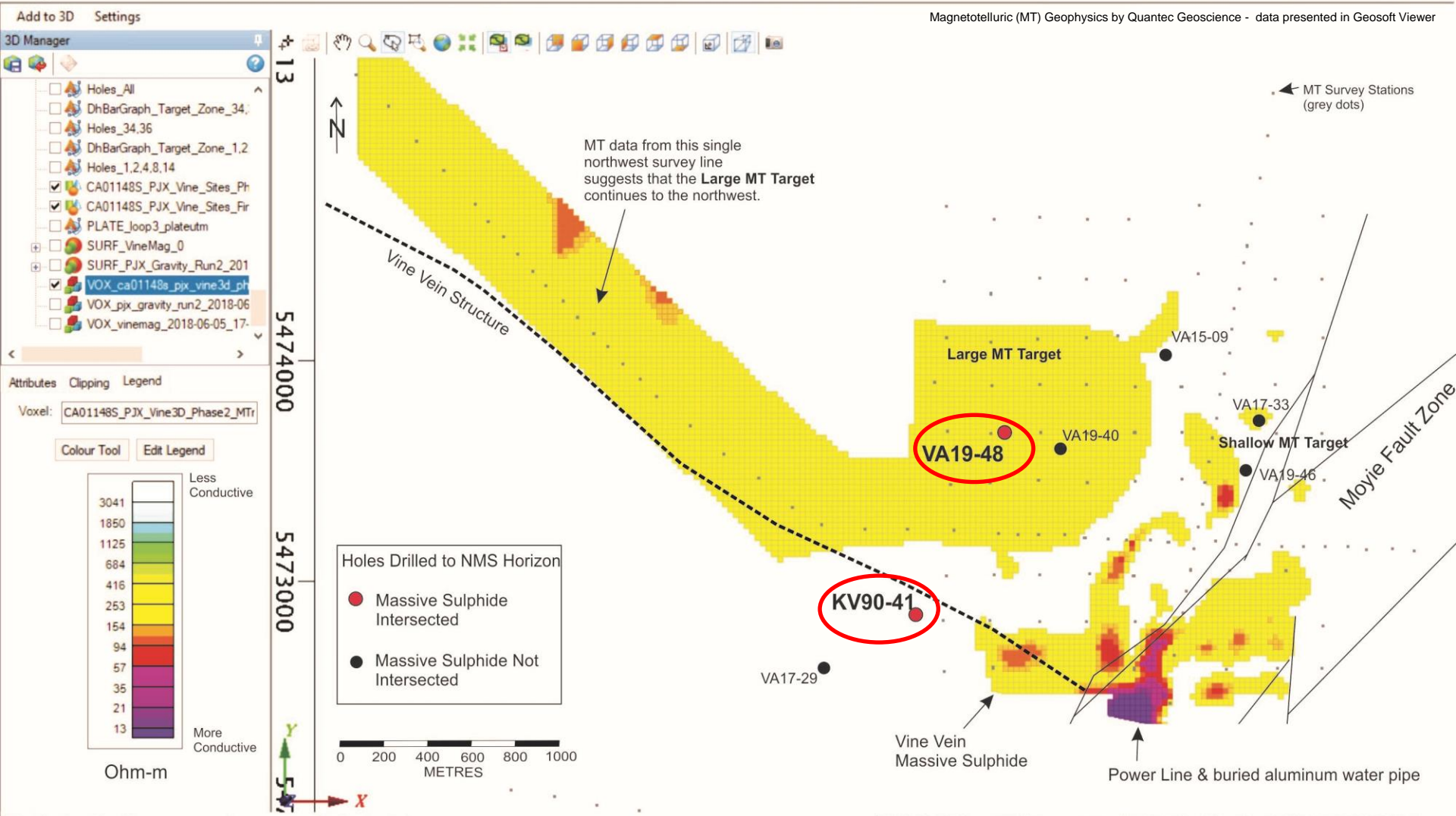
One layer (1.4m thick) graded 5177 ppm (0.52%) copper, 6320 ppm (0.63%) lead, 4526 ppm (0.45%) zinc and 7.6 ppm (7.6 g/T) silver with anomalous nickel (195 ppm) and cobalt (263 ppm).







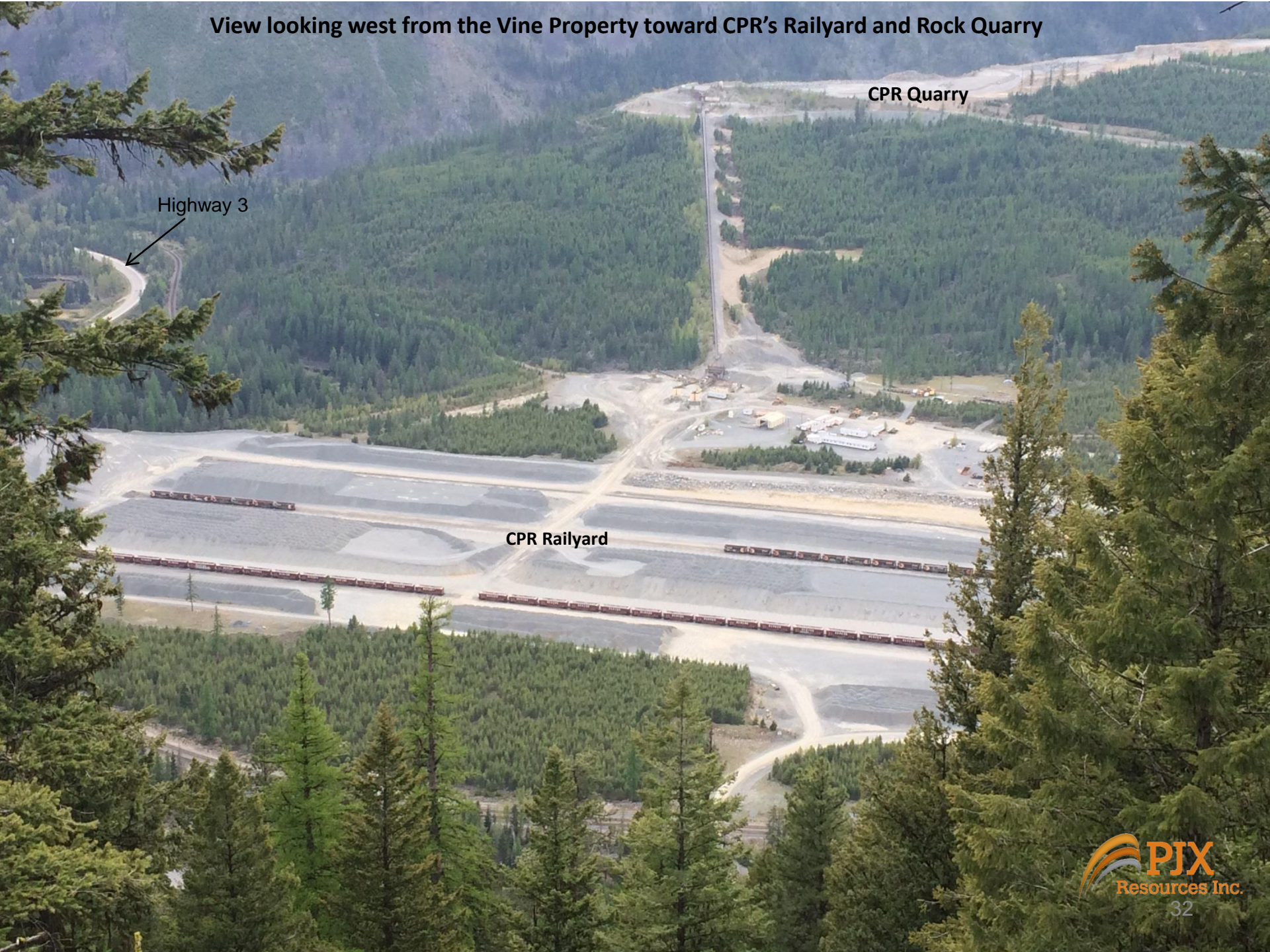
# Drilling and Geophysics support the extensive potential of the New Massive Sulphide (NMS) Horizon



- Only 7 holes have tested the NMS Horizon.
- Two holes (VA19-48 & KV90-41) intersected massive sulphide mineralization in the NMS Horizon.
- The two holes are about 700 metres apart, which suggests potential for a laterally extensive NMS Horizon similar in style to the Sullivan Deposit.
- Large MT anomaly appears to correlate with the NMS Horizon in hole VA19-48.
- Single MT geophysical survey line to the northwest suggests that the Large MT anomaly extends for over 4 km.



View looking west from the Vine Property toward CPR's Railyard and Rock Quarry



CPR Quarry

Highway 3

CPR Railyard





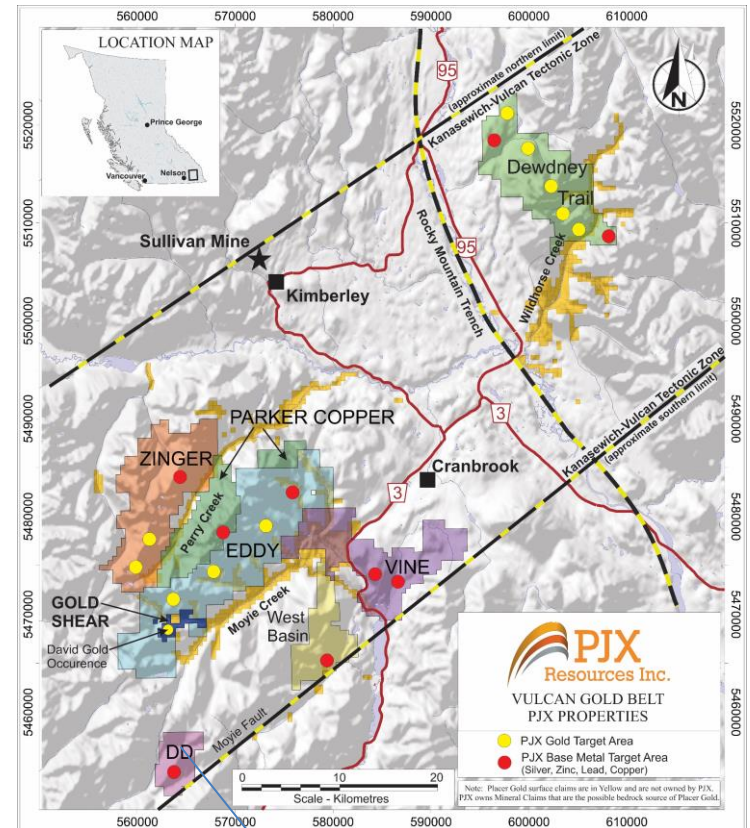
## Rail Lines Western Canada and Northwest USA

- PJX's Vine and other properties are located approximately 120 km east of Teck's Metallurgical Complex in Trail, BC.
- Some 8 million tonnes of zinc, 9 million tonnes of lead, and over 285 million ounces of silver were produced from processing Sullivan Mine concentrate at the Trail Met Complex.
- Sullivan Mine produced concentrate for over 90 years before being closed in 2001.
- All properties are road accessible and located near rail, power and a local workforce.

Vine Property

# Sullivan Style Silver-Lead-Zinc Targets – DD, Moby Dick, NZOU Properties

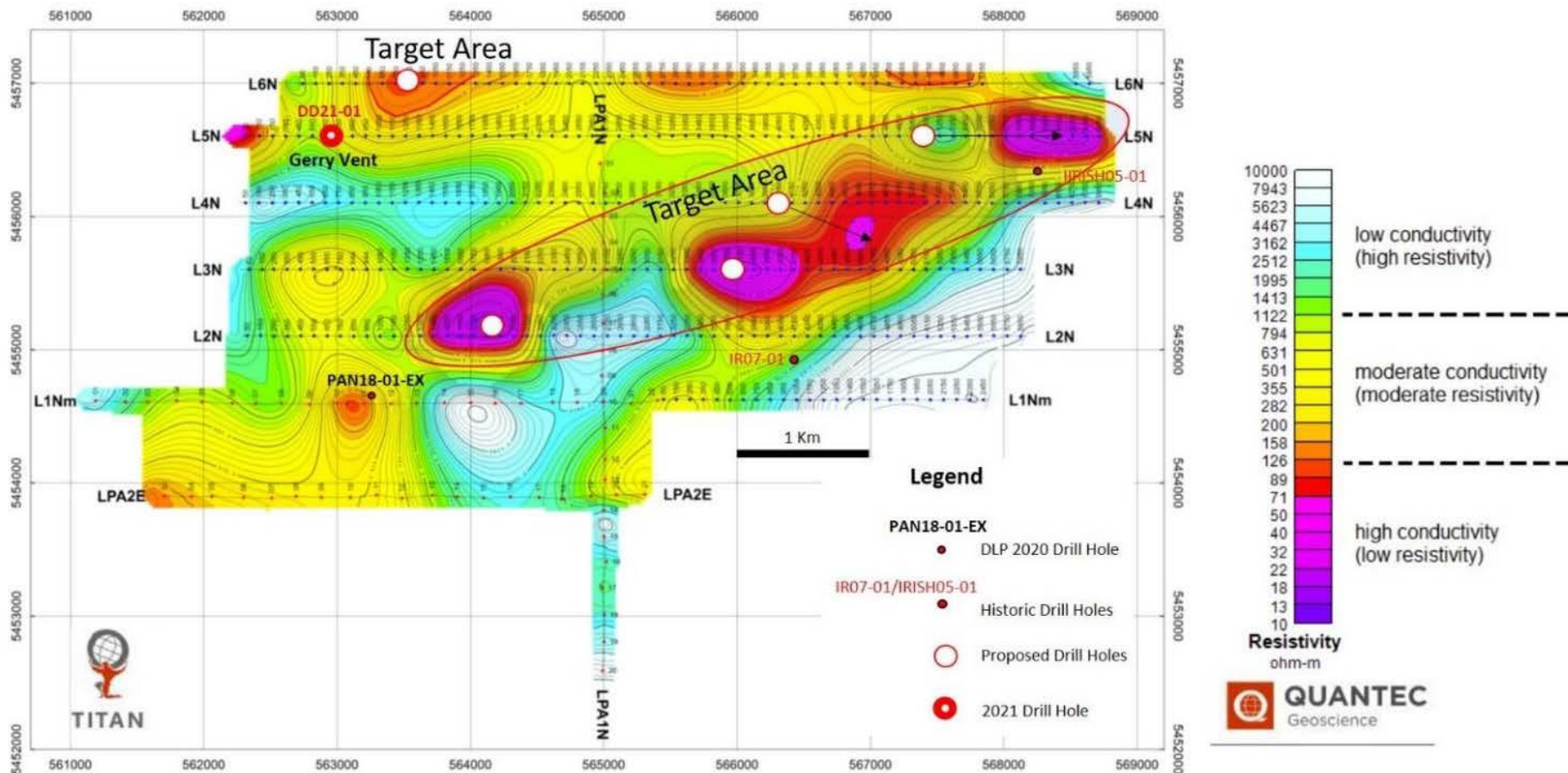
- **DD, NZOU and Moby Dick Properties** located 50 km south of Sullivan Mine.
- Historical and recent drilling and geophysics support the potential for Sullivan type massive sulphide mineralization at various depths on the properties.
- PJX's owns 100% mineral rights to the DD Property.
- PJX (50%) and DLP (50%) jointly own 100% of the mineral rights to the adjacent Moby Dick Property and jointly have the right to own 100% interest in the adjacent NZOU Property through an option agreement between DLP and the NZOU Property owner. Exploration expenditures incurred by DLP on these two properties will be applied toward DLP's exploration expenditure requirements to earn an interest in the DD Property.
- DLP can earn a 50% interest in the DD Property by spending \$4 million in exploration expenditures on the DD, Moby Dick and NZOU Properties and paying \$250,000 cash to PJX by July 13, 2024.
- PJX does not incur any exploration cost on the 3 properties until DLP earns 50% in the DD Property.
- DLP can earn an additional 25% interest, to a total of 75% interest, in the properties by completing a Commercial Feasibility Study on the properties by July 13, 2028.



DD, Moby Dick, NZOU Properties

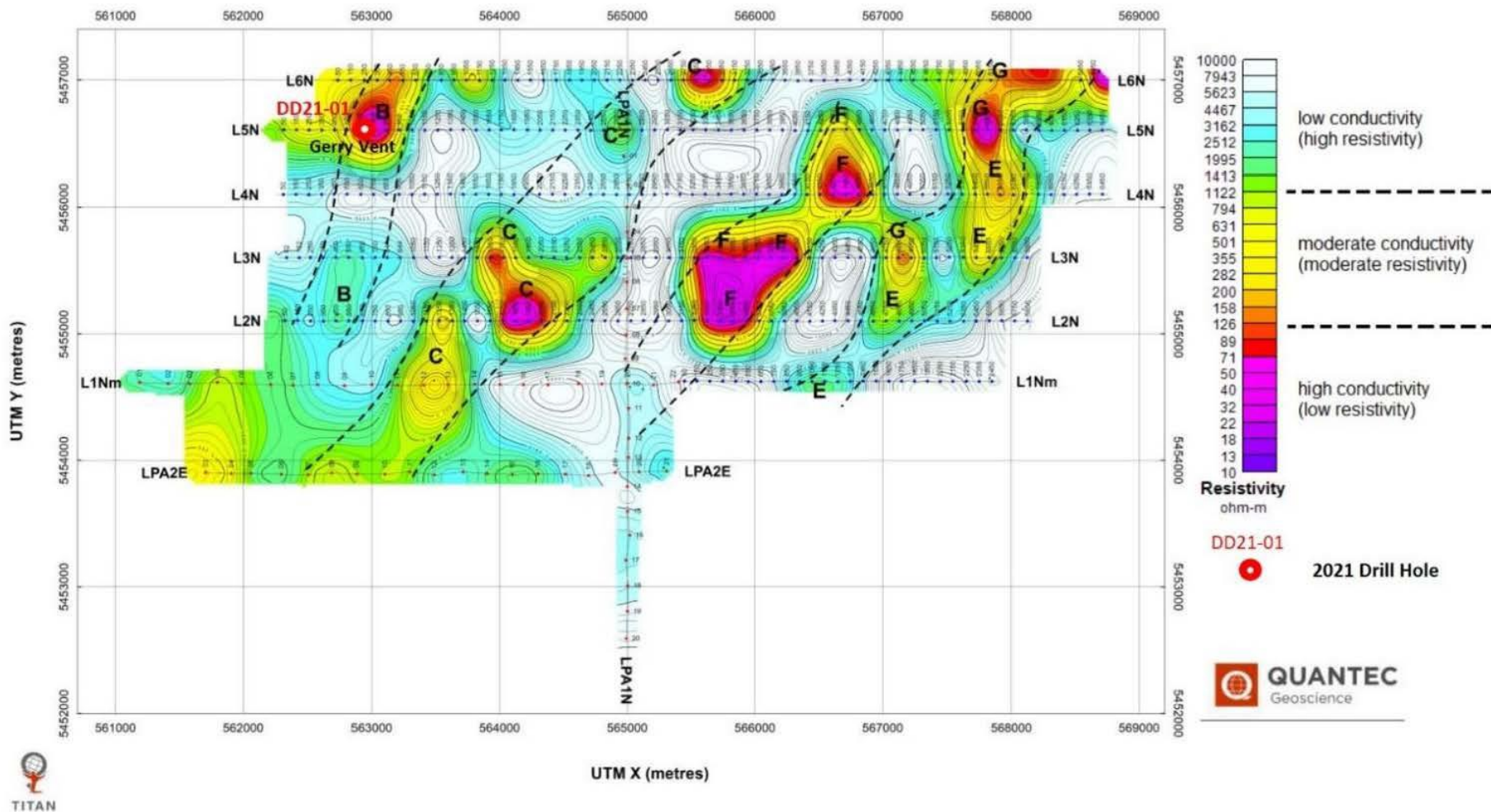






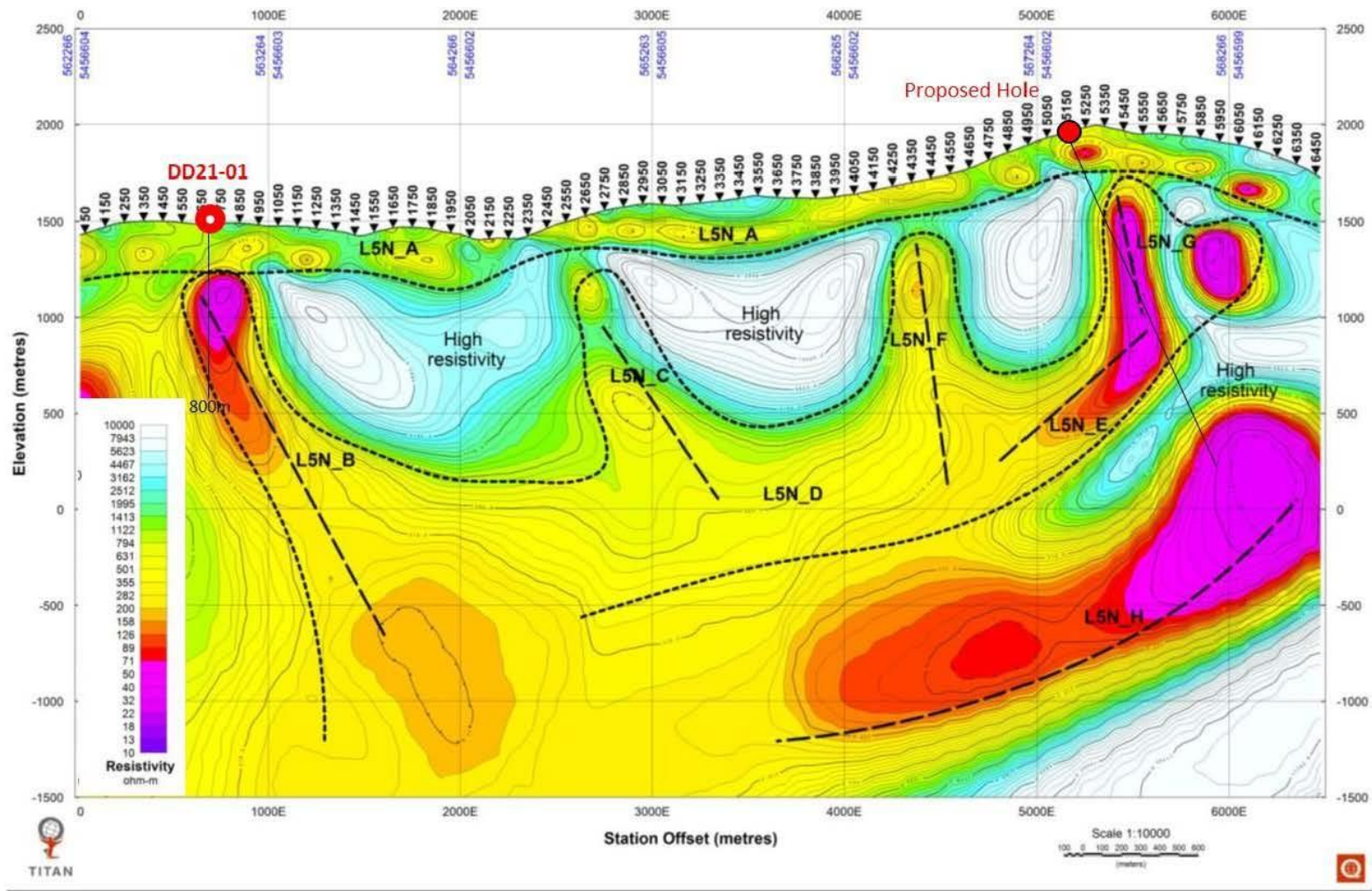
Titan MT resistivity plan at 0m elevation with planned drill holes.





Titan MT resistivity plan at 1000m elevation with DD21-01 on the Gerry Vent.





**Titan MT resistivity section along Line 5N showing the 2021 drill hole DD21-01 targeting the Gerry Vent**

# Sullivan Style Silver-Lead-Zinc Targets- Next Steps

---

## **Vine Property**

- Complete additional geophysics to further define drill targets within the 4 km geophysical target area.
- Drill on strike of existing Sullivan type mineralization and targets defined by geophysics.

**PJX development strategy includes strategic partnerships to advance property potential.**

## **DD Property**

- In July 2020, PJX optioned the DD Property (silver-lead-zinc targets) to DLP Resources Inc.
- Drilling and Titan MT geophysics have identified multiple target areas with potential to host Sullivan style massive sulphide mineralization at various depths on the 3 contiguous properties.
- Drilling is planned for 2021 to test the targets.



# Directors' and Officers' Biographies

## Experienced Management Team and Board of Directors

### Over 150 years of Mineral Industry Experience

---

#### ***John Keating, PGeo – Chief Executive Officer, President and Director***

Mr. Keating has over 35 years of experience in the mining and exploration industry. He conducted early and advanced stage exploration with Noranda and was a global commodity analyst providing supply, demand and price forecasting for gold, silver, and base metals, and negotiated the resolution of tariff and non-tariff barriers to trade in metals for the Federal Government of Canada. Previously, Mr. Keating was President and Chief Executive Officer for Black Bull Resources and Golden Chalice Resources. Mr. Keating holds a BSc(Geology) from Concordia University, Montreal, Quebec.

#### ***Linda Brennan – Chief Financial Officer, Corporate Secretary and Director***

Ms. Brennan has over 20 years of providing strategic advice and organizing and structuring financings to numerous early stage companies in the junior resource sector. She brings knowledge of finance, accounting and public markets to PJX. She has also served in the capacity of corporate secretary for several TSXV listed companies. Ms. Brennan holds Business Administration and Bachelor of Commerce degrees from the University of Victoria and Royal Roads University, respectively.

#### ***James Clare – Director***

Mr. Clare is a member of the Canadian Bar Association and a Partner with Bennett Jones LLP. Mr. Clare practices in the areas of corporate and securities law, with an emphasis on corporate finance and mergers and acquisitions. Mr. Clare's practice is focused on the mining and oil and gas sectors. His transactional experience includes domestic and cross-border public and private corporate finance transactions, representing issuers and agents as well as merger and acquisitions transactions. He also advises public issuers on general corporate and securities law matters including stock exchange listings, continuous disclosure obligations and other regulatory compliance issues. Mr. Clare holds Bachelor of Laws and Bachelor of Arts degrees from the University of Western Ontario and Acadia University, respectively.



# Directors' Officers' and Advisor Biographies

## Experienced Management Team and Board of Directors

### Over 120 years of Mineral Industry Experience

#### ***Kent Pearson, PGeo – Director***

Kent Pearson is a professional geologist with more than 30 years of experience in the mining industry and in the capital markets sector. His mining experience spans from grassroots exploration through to mine production. In the capital markets sector, his background includes equity and debt research experience as well as executive roles in investment banking in the resources sector. Since 2008, Mr. Pearson is President of Locarno Advisory Inc., a firm that specializes in mergers and acquisitions, mineral and mining asset review and disposition and strategic planning. Kent holds a Bachelor's Degree in Geology from the University of Alberta and an MBA from Queen's University.

#### ***Joseph Del Campo – Director***

Mr. Del Campo holds Chartered Professional Accountant (CPA) and Certified Management Accountant (CMA) designations. He began his career with Falconbridge Limited and spent over 19 years working within the Falconbridge group of companies at progressive financial positions, including Controller and Treasurer of Falconbridge Dominicana, a ferronickel operation in the Dominican Republic; and Falconbridge Gold Corporation, a gold mining company with operating mines in Africa and Timmins, Ontario. Over the past 20 years, Joseph has been a Director and Vice President, Finance and Chief Financial Officer (CFO) of a number of junior exploration companies listed on the TSX and TSX Venture Exchange.

#### ***Dr. Trygve Hoy, P.Eng – Director***

Dr. Hoy is a Professional Engineer with 45 years of mineral industry experience working as a research economic and exploration geologist with the British Columbia Department of Mines prior to consulting on mineral properties for the private sector. His experience and expertise spans most metallic deposit types including: Sullivan zinc-lead-silver deposit, Sedex copper deposits, Copper-gold porphyry deposits, and gold vein and epithermal gold deposits. Trygve received his BSc (Geology) from the University of British Columbia, his MSc (Geology) from Carleton University, Ottawa, his Doctorate of Geology from Queens University, Ontario and Geological Engineering Degree from the University of British Columbia in 1976.





# Directors' Officers' and Advisor Biographies

## Experienced Management Team and Board of Directors

### Over 120 years of Mineral Industry Experience

#### ***Victor Bradley – Director***

Educated in England, Vic is a Chartered Professional Accountant with over 50 years experience in the mining industry, including more than 15 years with Cominco Ltd. and McIntyre Mines Ltd. in a wide variety of senior financial positions from Controller to Chief Financial Officer. Over the past 30 years Vic has founded, financed and operated several mining and advanced stage exploration and development companies, including the original Yamana Gold Inc., Aura Minerals Inc. and Nevoro Inc. (sold to Starfield Resources). Vic founded the original Yamana in early 1994, and served as President/CEO and then Chairman of the Board and Lead Director until 2008. He served as Chairman of Osisko Mining Corp from November 2006 up to its sale for \$4.1 billion to Agnico Eagle and Yamana in June, 2014. Osisko unlocked the porphyry gold target at Malartic and, in 6 years from first drill hole to commercial production, created the largest open pit gold mine in Canada. He served as a director of Osisko Gold Royalties Ltd. (spun out of the Osisko Mining sale) from June, 2014 to May, 2018 and as Chairman of Nevada Copper Corp. from February, 2012 to February, 2017. He now serves as Chairman of Osisko Bermuda Ltd., Osisko Gold Royalties' offshore subsidiary that controls all of its assets outside of North America. Vic also serves as a Director and Chairman of the Board with BTU Metals Corp. and with Golden Lake exploration.

#### ***David Pighin - Advisor***

Mr. Pighin has been actively involved in exploration and mine geology for junior exploration companies and multinational corporations for the past 47 years. He is a member of the Association of Professional Engineers and Geoscientists of BC. Dave has designed and managed programs ranging from grass roots exploration to advanced drilling for gold, silver, diamonds, rare earths, gypsum, and base metals, mainly in the Province of BC, and also in the Yukon, Northwest Territories, Western U.S.A., and Mexico. He was employed by Cominco Ltd. for 24 years. During this time he was involved with mapping local and regional geology at the Sullivan Mine and was also involved with the development and use of the Aldridge Marker Bed Horizons as a proven exploration tool. Dave discovered the Fors lead-zinc-silver Sedex massive sulphide occurrence in 1966 and the Vine lead-zinc-silver-gold vein deposit in 1976. Since 1998, Mr. Pighin has been a self-employed Consulting Geologist with HighGrade Geological Consulting, located in Cranbrook, BC, Canada.



# Capital Structure (as of March 1, 2021)

TSXV – PJX

Share Price: (March 1, 2021)	\$0.23	Market Capitalization: (March 1, 2021)	\$28,479,680
52 week hi:low	\$0.23-\$0.07		
Shares Issued:	123,824,694	Shareholders:	
Warrants:	40,139,701	Management/Directors	3.05%
Options:	<u>10,812,500</u>	Largest Shareholders	60.00%
Fully Diluted:	174,776,895		
Working Capital (March 1, 2021)	\$ 2,900,000		
Outstanding warrants at \$0.20-\$0.30:	\$ 9,767,686		
Outstanding options at ≈ \$0.22:	<u>\$ 2,378,750</u>		
	\$ 15,076,436		

## PJX Objectives In Summary

- Identify new region with large gold deposit potential
- Region with favourable political jurisdiction
- Region with Infrastructure
- Build Experienced Team
- Consolidate 100% mineral title to large land package
- Develop Target areas to drill and make a discovery
- Secure permits to drill and test target areas
- Ready to make a discovery.

Completed (Vulcan Gold Belt)  
 Completed (British Columbia, Canada)  
 Completed (roads, rail, power)  
 Completed (Board, Management, Consultants)  
 Completed (Over 500 square kilometres)  
 Completed and on-going (over 20 areas)  
 Completed (6 Multi-Year Permits)

